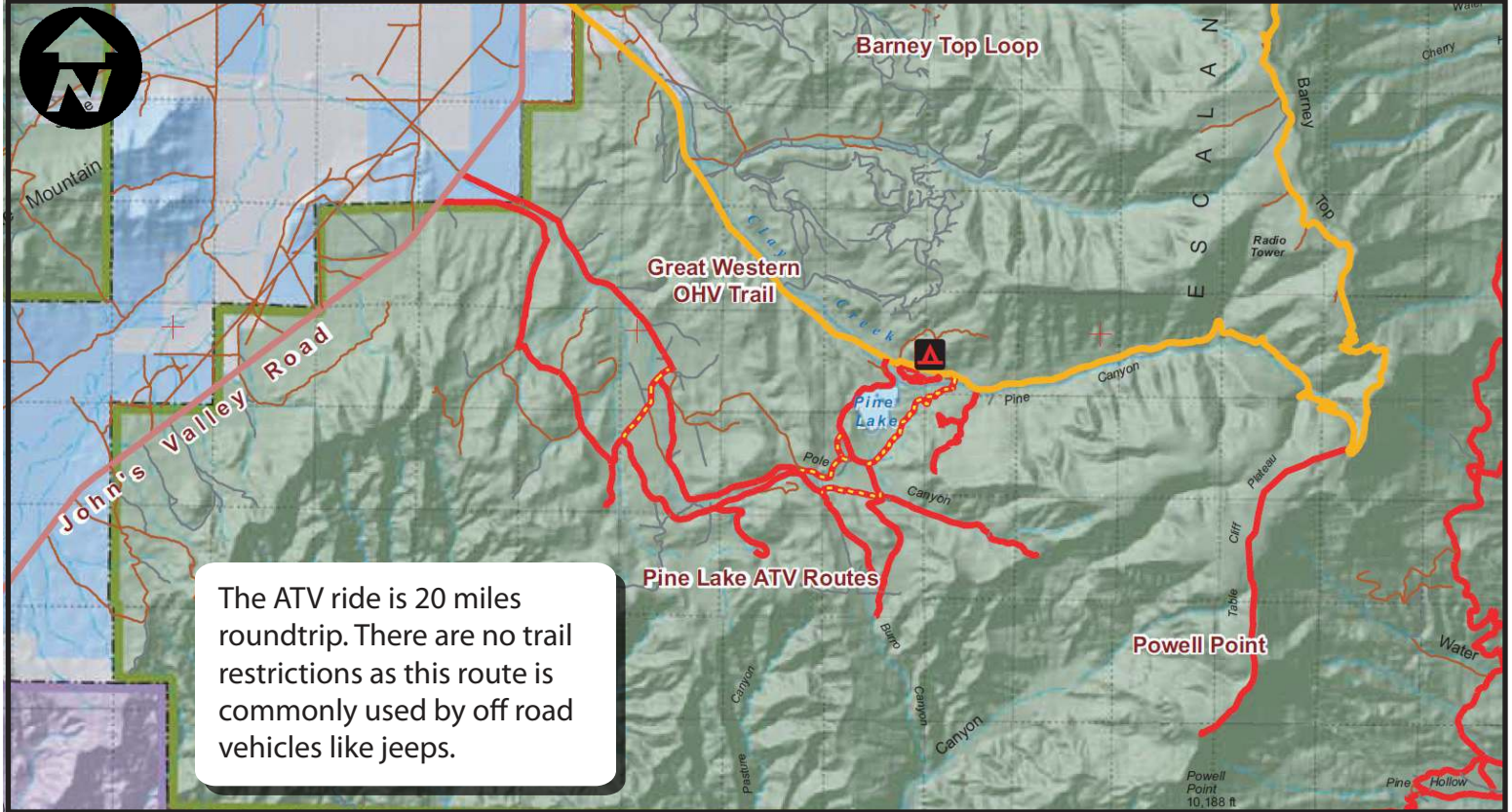


Powell Point



The views from the top are majestic and certainly worth the trip.



Skill Level - Intermediate

Located approximately 55 miles from downtown Panguitch. Riders will trailer their ATV's to the staging area and trailhead at Pine Lake. Take US 89 South from Panguitch to SR12 East through Red Canyon. Turn left on Johns Valley Road at the Bryce Canyon Turnoff at SR63. Take Johns Valley Road approx. 15 miles and turn right at the Pine Lake Turnoff. Roads are clearly marked. The staging area is another 10 miles just past Pine Lake.



Riders will enjoy the 3/4 mile hike at the top, to the point. The elevation here is well over 10,000 ft.



More information at www.BryceCanyonCountry.com and www.Utah-Trails.com