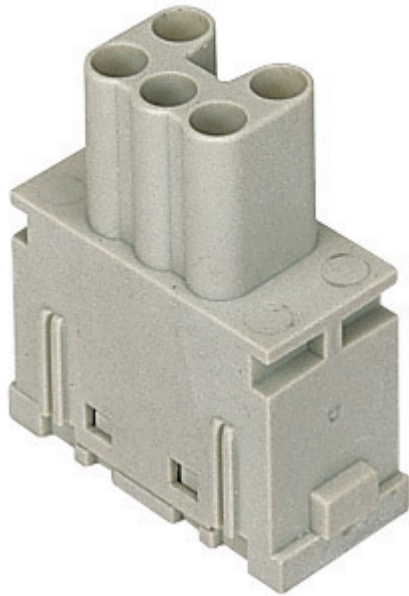


Part number

CX 05 SF



Female modular insert, Mixo series, spring terminal connection, 5 poles, 1 module, 16 A 400 V 6 kV 3

Product description

| | |
|------------------------|----------------------------|
| Product type | Modular insert |
| Series | Mixo |
| Connection type | Spring terminal connection |
| Gender | Female |
| N. of poles | 5 poles |
| Size | 1 module |

Technical data

| | |
|--|---|
| Current | 16 A |
| Voltage | 400 V |
| Rated impulse withstand voltage | 6 kV |
| Pollution degree | 3 |
| Rated voltage according to UL/CSA | 600 V |
| Wire cross-section | 0,14 mm ² - 2,50 mm ² |
| AWG size | 26 - 14 |
| Contact type | Turned silver plated |
| IP degree of protection | IP20 without enclosure, IP65/IP66/IP68/IP69 with enclosure |

Further technical details

| | |
|---|--------------------------------|
| Characteristics according to EN 61984 | 16A 400V 6kV 3; 16A 500V 6kV 2 |
| Insulation resistance | ≥ 10 GΩ |
| Contact resistance | ≤ 3 mΩ |
| Weight | 17,00 g |
| Operating temperature range (min, max) | -40 °C ... +125 °C |
| UL 94 flammability rating | V-0 |

Material properties

| | |
|------------------------------|--|
| Main material | Polycarbonate |
| Colour | RAL 7032 grey |
| RoHs conformity | Compliant with exemption 6(c): copper alloy containing up to 4% lead by weight |
| China RoHs - EFUP | 50 |
| REACH SVHC substances | Yes Lead |

Approvals / Standards

| | |
|---------------------------|---------------------------|
| Reference standard | EN 61984:2009-06 |
| Certifications | CSA, CQC, DNV-GL, BV, EAC |
| UL | ECBT2 |
| cUL | ECBT8 |

General ordering information

| | |
|-------------------|---------------|
| EAN13 code | 8015747096041 |
|-------------------|---------------|

Packaging Information

| | |
|----------------------------------|----------------------|
| Packaging weight | 1,24 kg |
| Packaging volume | 3,51 dm ³ |
| Packaging description | Carton box |
| Packaging quantity | 60 Pcs |
| Packaging EAN code | 8015747221221 |
| Sub-packaging length | 35,00 mm |
| Sub-packaging height | 40,00 mm |
| Sub-packaging width | 155,00 mm |
| Sub-packaging weight | 0,21 kg |
| Sub-packaging volume | 0,22 dm ³ |
| Sub-packaging description | Carton tray |
| Sub-packaging quantity | 10 Pcs |
| Sub-packaging EAN barcode | 8015747096058 |

Part number

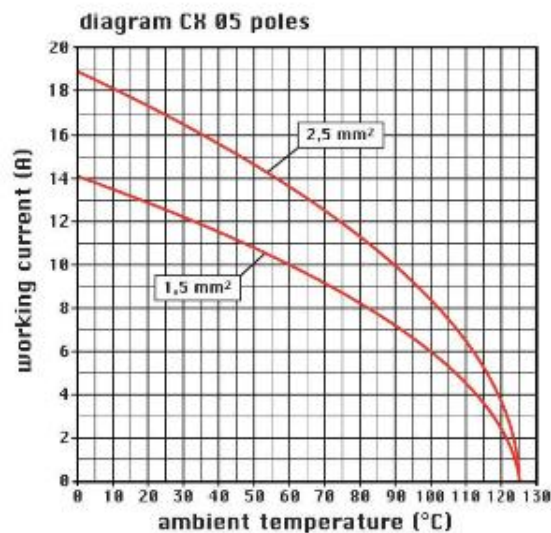
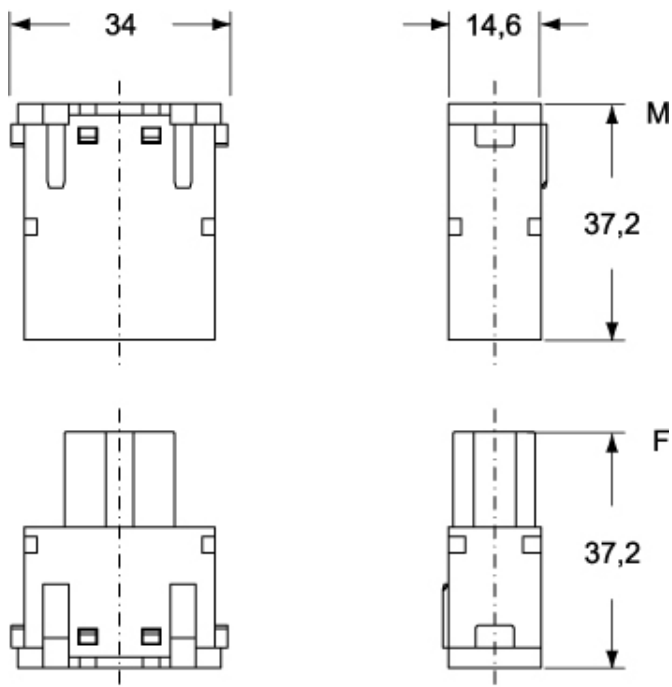
CX 05 SF



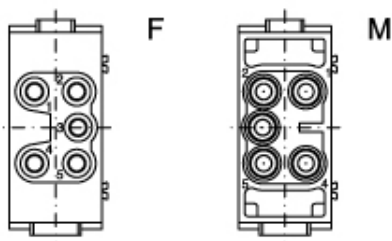
Catalogue drawings

Catalogue drawings

CX 05 SM



CX 05 SF



Notes

Inserts CX 05 S:

- characteristics according to EN 61984:
(16A 400V 6kV 3)
(16A 500V 6kV 2)
- for maximum current load, see the insert load curve section
- inserts for section conductors: 0.14 - 2.5 mm² - AWG 26 - 14
- stripping length see section feature of inserts
- footprint 1 module

the modular inserts must be installed in suitable frames which in turn are installed in traditional housings or COB panel support

Dimensions shown in mm are not binding and may be changed without notice.

