

Guaranteed Performance Beyond the Standards NK6000™ UTP Copper Cabling Systems

Panduit® NK6000™ UTP Copper Cabling Systems are designed for optimum network performance, design flexibility, and reliability to protect network investments well into the future. Each system provides users with headroom assurance that will exceed ANSI/TIA-568.2-D Category 6 and ISO 11801 Edition 2.1 Class E standards for the following key electrical parameters: Insertion Loss (IL), Near-End Crosstalk (NEXT), Power Sum NEXT, ACR-N, Power Sum ACR-N, ACR-F, Power Sum ACR-F, and Return Loss.

The design of the horizontal and patch cable utilizes technology and advanced connector compensation techniques developed by Panduit to achieve channel bandwidth performance above industry standard requirements. The innovative design reduces the weight and diameter of Category 6 UTP cabling, improving pathway capacity and resulting in improved airflow through dense data center enclosures and enterprise pathways without compromising performance.

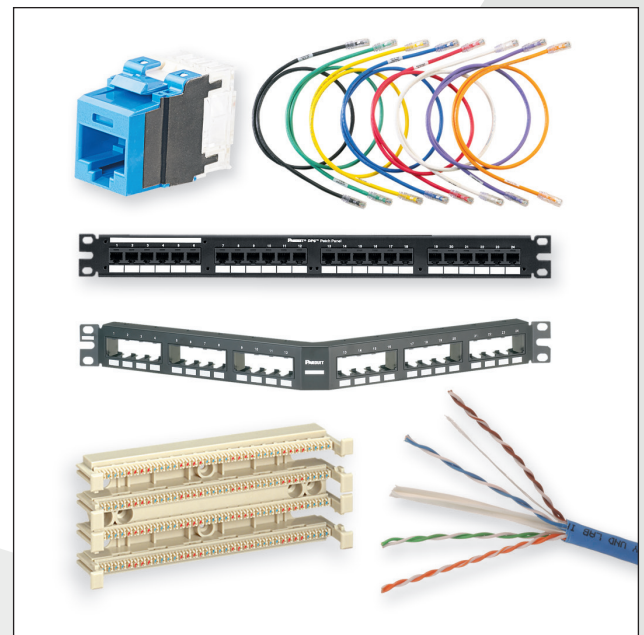
The superior Bit Error Rate (BER) of the Panduit solution means a lower Packet Error Rate (PER) for your network. This means fewer packets need to be retransmitted, conserving valuable network bandwidth.

To determine the guaranteed headroom performance, over 100 channels were constructed, tested, and analyzed.

- These channels consisted of three and four connector topologies – in both short and long cabling runs – to ensure true worst-case conditions
- Testing was conducted at swept frequencies from 1 MHz to 250 MHz per industry standards
- The testing represents “real world” conditions through the use of an industry recognized hand-held tester, not test analyzers or computer models

Guaranteed Channel Headroom	
Electrical Value	Over Standard (dB*)
Insertion Loss	5.0%
NEXT	4.0 dB
PSNEXT	5.0 dB
ACR-N	5.0 dB
PSACR-N	7.0 dB
ACR-F	6.0 dB
PSACR-F	8.0 dB
Return Loss	2.5 dB

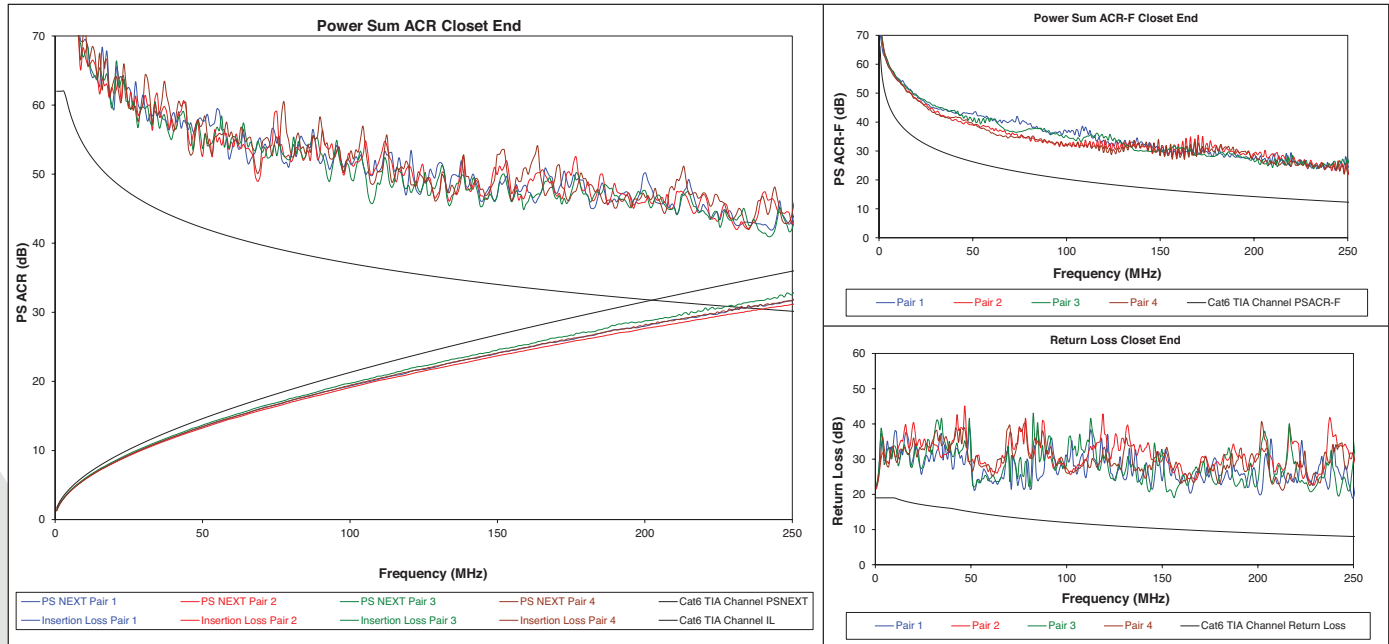
*Electrical values above are specified standards and consist of worst pair margin per ANSI/TIA-568.2-D Category 6 and ISO 11801 Class E standards.



Guaranteed Performance Beyond the Standards

NK6000™ UTP Copper Cabling Systems

Electrical Channel Performance Data



NK6000™ Solution Components

Description	NK6000™ UTP Copper Cabling System (100 meter)
Copper Cable	
Riser	PUR6004**-UY, PUR6004**-W
Plenum	PUP6004**-UY, PUP6004**-ULP, PUP6004**-W, PUP6004**-WLP, PUP6004**-FLP
Patch Cords	
CM	NK6PC^Y
Jack Module	
UTP	NK688M*
Patch Panels	
24-port, Angled, 1 RU	NKA6PPG24Y
48-port, Angled, 2 RU	NKA6PPG48Y
24-port, Flat, 1 RU	NK6PPG24Y
48-port, Flat, 2 RU	NK6PPG48Y
Punchdown System	
Punchdown Termination Kit	GPKBW24Y

** Available in Black (BL), Blue (BU), Green (GR), International Gray (IG), Orange (OR), Red (RD), Violet (VL), White (WH), and Yellow (YL).
 ^ Patch cords are available in a variety of colors and lengths (feet and meters). Visit www.panduit.com or contact customer service for additional information.
 * Available in standard colors IW (Off White), EI (Electric Ivory), WH (White), AW (Arctic White), IG (International Gray), BL (Black), BU (Blue), RD (Red), YL (Yellow), GR (Green), OR (Orange), and VL (Violet).