

Part number

MK IAP20



Angled Bulkhead mounting housing, CK series, with 1 lever, M20 cable entry, size "21.21"

Product description		Material properties	
Product type	Angled bulkhead mounting housing	Other materials	Lever: Polyamide (PA) Gasket: TPE
Series	CK	Colour	RAL 7035 grey
Closing type	With 1 lever	RoHS conformity	Compliant
Size	Size "21.21"	China RoHS - EFUP	E
Cable entry	With cable entry M20	REACH SVHC substances	No
Specification	White colour	Approvals / Standards	
Technical data		UL	ECBT2
IP degree of protection	IP44 - IP66 / IP67 / IP69 with CKR 65 (D)	cUL	ECBT8
Further technical details		General ordering information	
Weight	14,00 g	EAN13 code	8015747056472
Operating temperature range (min, max)	-40°C...+125°C	eCl@ss 8.1	27440202
		ETIM 7.0	EC000437
		Packaging Information	
		Packaging length	360,00 mm
		Packaging height	165,00 mm
		Packaging width	315,00 mm
		Packaging weight	1,48 kg
		Packaging volume	18,71 dm ³
		Packaging description	Carton box
		Packaging quantity	100 Pcs
		Packaging EAN code	8015747056489
		Sub-packaging weight	0,15 kg
		Sub-packaging description	Carton box
		Sub-packaging quantity	10 Pcs
		Sub-packaging EAN barcode	8015747056496

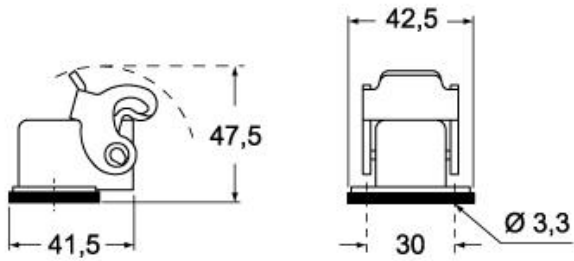
Part number

MK IAP20

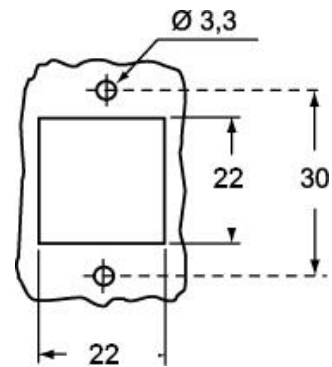


Catalogue drawings

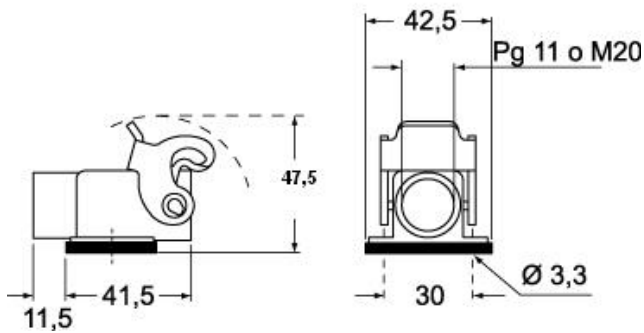
CK IA(N)



Catalogue drawings

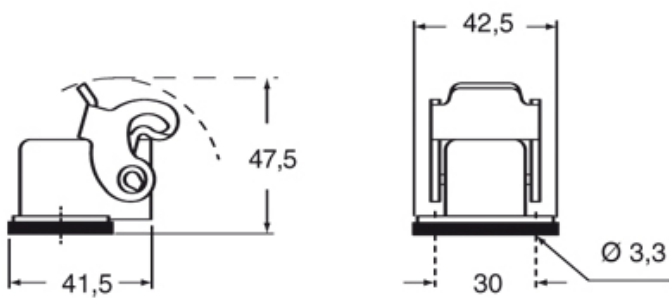


CK IAP(N)S - MK IAP (N)



Catalogue drawings

CK IA(N)



Notes

Dimensions shown in mm are not binding and may be changed without notice.