

# Ovalis - Connected Single Socket Outlet 16A

## Device user guide

Information about features and functionality of the device.

05/2023

# Legal Information

The Schneider Electric brand and any trademarks of Schneider Electric SE and its subsidiaries referred to in this guide are the property of Schneider Electric SE or its subsidiaries. All other brands may be trademarks of their respective owners.

This guide and its content are protected under applicable copyright laws and furnished for informational use only. No part of this guide may be reproduced or transmitted in any form or by any means (electronic, mechanical, photocopying, recording, or otherwise), for any purpose, without the prior written permission of Schneider Electric.

Schneider Electric does not grant any right or license for commercial use of the guide or its content, except for a non-exclusive and personal license to consult it on an "as is" basis. Schneider Electric products and equipment should be installed, operated, serviced, and maintained only by qualified personnel.

As standards, specifications, and designs change from time to time, information contained in this guide may be subject to change without notice.

To the extent permitted by applicable law, no responsibility or liability is assumed by Schneider Electric and its subsidiaries for any errors or omissions in the informational content of this material or consequences arising out of or resulting from the use of the information contained herein.

---

# Table of Contents

Safety information .....	5
Ovalis - Connected single socket outlet 16A .....	6
For your safety .....	6
About the device.....	7
Installing the device .....	7
Pairing the device with Wiser Hub .....	8
Configuring the device .....	9
Renaming the device .....	9
Changing the icon .....	9
Setting the device location in the room.....	11
Identifying the device .....	12
Removing the device.....	13
Resetting the device.....	13
Using the device .....	13
Switching operation manually .....	13
Switching operation using the app .....	14
Create or assign a schedule .....	15
Monitoring energy consumption .....	16
Creating a moment .....	16
Creating an automation .....	18
LED indications .....	25
Troubleshooting .....	25
Technical Data .....	26



# Safety information

## Important information

Read these instructions carefully and look at the equipment to become familiar with the device before trying to install, operate, service, or maintain it. The following special messages may appear throughout this manual or on the equipment to warn of potential hazards or to call attention to information that clarifies or simplifies a procedure.



The addition of either symbol to a “Danger” or “Warning” safety label indicates that an electrical hazard exists which will result in personal injury if the instructions are not followed.



This is the safety alert symbol. It is used to alert you to potential personal injury hazards. Obey all safety messages that accompany this symbol to avoid possible injury or death.

<b>⚡ ⚠ DANGER</b>
<b>DANGER</b> indicates a hazardous situation which, if not avoided, <b>will result in death or serious injury.</b> <b>Failure to follow these instructions will result in death or serious injury.</b>
<b>⚠ WARNING</b>
<b>WARNING</b> indicates a hazardous situation which, if not avoided, <b>could result in death or serious injury.</b>
<b>⚠ CAUTION</b>
<b>CAUTION</b> indicates a hazardous situation which, if not avoided, <b>could result in minor or moderate injury.</b>
<b>NOTICE</b>
NOTICE is used to address practices not related to physical injury.

## Ovalis - Connected single socket outlet 16A



S3X0559

### For your safety

#### **⚠ DANGER**

##### **HAZARD OF ELECTRIC SHOCK, EXPLOSION, OR ARC FLASH**

Safe electrical installation must be carried out only by skilled professionals. Skilled professionals must prove profound knowledge in the following areas:

- Connecting to installation networks.
- Connecting several electrical devices.
- Laying electric cables.
- Safety standards, local wiring rules and regulations.

**Failure to follow these instructions will result in death or serious injury.**

## About the device

The Connected Single Outlet 16 A (hereinafter referred to as a **Socket outlet**) is a connected electrical outlet designed to manage and control electrical devices in a convenient and efficient manner.

The Socket outlet is equipped with:

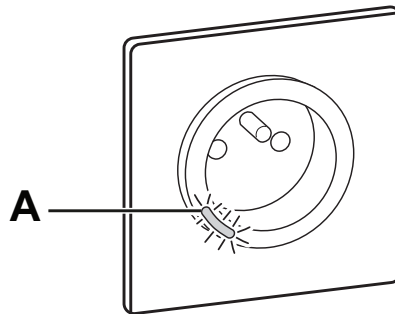
- **Temperature protection mechanism:** When the Socket outlet is used with a high load over a long time, the mechanism can switch off the Socket outlet, ensuring overheat protection.
- **Overload protection mechanism:** When the Socket outlet is used with a high load (~18A or higher), the mechanism can switch off the Socket outlet, ensuring overload protection.

### Features of a Socket outlet:

- **Remote access:** You can switch On/Off the Socket outlet using the app or through a connected wireless switch or through voice control (Google Home, Amazon Alexa, Siri) in addition to using the On/Off button on the device itself.
- **Power consumption:** You can monitor power (W) consumption using the app.
- **Easy installation:** The Socket Outlet fits in existing wall boxes (40 mm), no separate wall box requirement.
- **Easy scheduling:** You can create a schedule for the various device functions in an easy manner as per your specific requirements for comfort and convenience.
- **High safety:** The integrated overload and overheat protection ensures that the Socket outlet is safe at all times.

## Operating element

A. Push button with status LED



## Installing the device

Refer to the installation instruction supplied with this product.

## Pairing the device with Wiser Hub

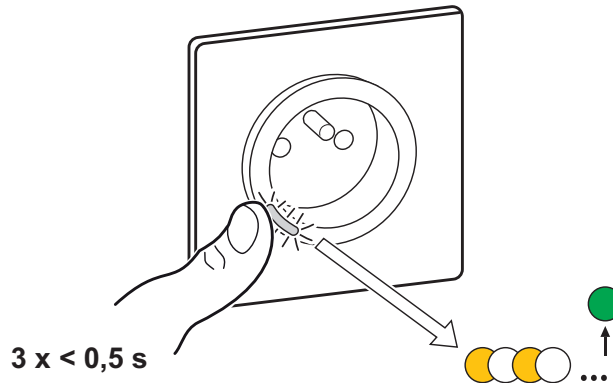
Using the Wiser Home app, pair your Socket outlet with the **Wiser Hub** to access and control the Socket outlet.

To pair the Socket outlet:

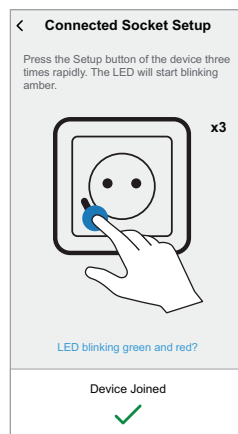
1. On the Home page, tap .
2. Tap **Devices** >  and tap **Appliances** > **Connected Socket** > **Next**.


**TIP:** The next screen shows the joining process of Socket outlet.

3. Short press the push button 3 times on the Socket outlet.  
Make sure the LED blinks amber.




4. Wait for a few seconds until the LED turns green. You can also see in the app that the Socket outlet is joined.

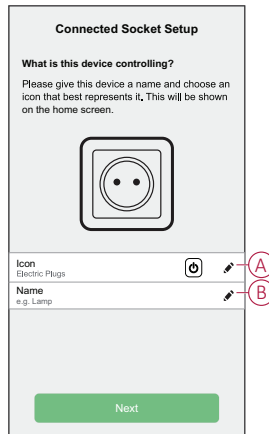


5. Once the device is joined, tap  (A) and select an icon suitable for your load and tap **Save**.

**NOTE:** Electric plug icon is assigned by default.



6. Tap  (B) and assign a name.



7. Tap **Next** to assign the Socket outlet to an existing room or a new room.
8. Tap **Submit**.

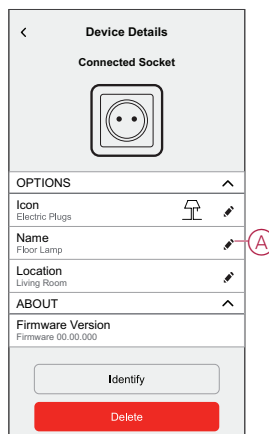
You can see the added Socket outlet on the **Home** page under the room tab or under **ALL** devices.

## Configuring the device

### Renaming the device


Using the Wiser Home app, you can rename your Socket outlet.  
To rename the Socket outlet:


1. On the Home page, tap .
2. Tap **Devices > Connected Socket > Device Name (A)** to rename the Socket outlet.



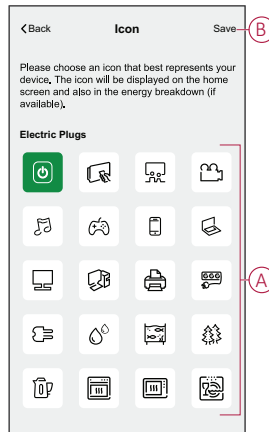
### Changing the icon

You can change the icon of the device.

1. On the **Home** page, tap  > **Devices > Connected Socket**.

2. Tap  **Icon**, select an icon of your choice (A) and tap **Save** (B).


**IMPORTANT:** If you have installed Socket outlet and PowerTag, changing the icon to another category will delete all the historical data. Refer to Energy view of individual devices.

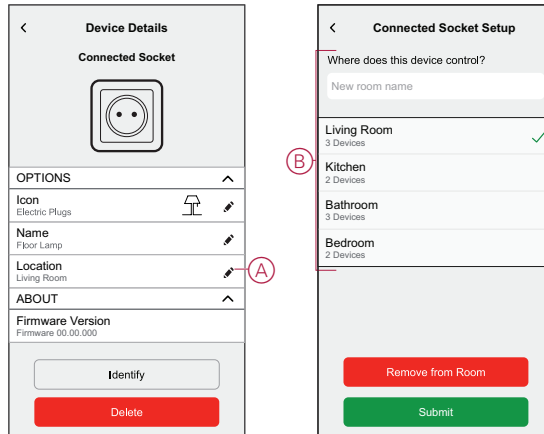


## Setting the device location in the room

Using the Wiser Home app, you can assign your Socket outlet to any room (such as bedroom, living room, dining room etc.).

To assign a Socket outlet to a room:

1. On the Home page, tap .
2. Tap **Devices > Connected Socket > Location (A)** to assign the Socket outlet to the existing room or a new room (B) and tap **Submit**.



## Identifying the device

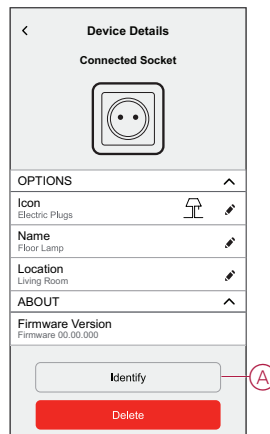
Using the Wiser Home app, you can identify a Socket outlet from the other available devices in the room.

To identify the Socket outlet:

1. On the Home page, tap .
2. Tap **Devices > Connected Socket > Identify (A)**.

### NOTE:

- This feature flashes the Socket outlet LED, so you can identify the actual device. It may take up to a minute to start and flash the Socket outlet LED.
- The socket LED will continue to flash until you tap **OK**.

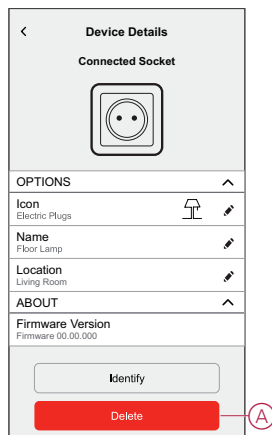


## Removing the device

Using the Wiser Home app, you can remove the Socket outlet from the Wiser system.

To remove the Socket outlet:

1. On the Home page, tap .
2. Tap **Devices > Connected Socket > Delete (A)**.

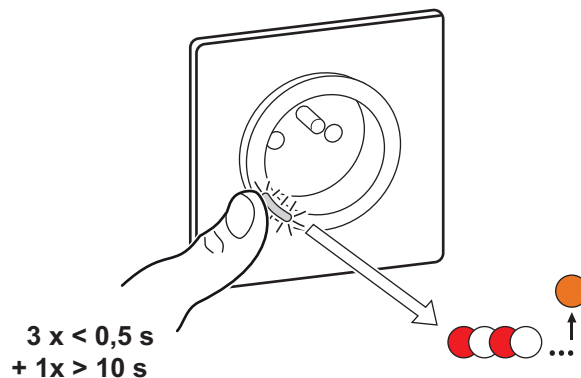


## Resetting the device

You can reset the Socket outlet to the factory default. It can be reset manually at any time, e.g., when the Hub is replaced.

Short press the push button 3 times and hold for 10 seconds to reset the device to the factory default mode.

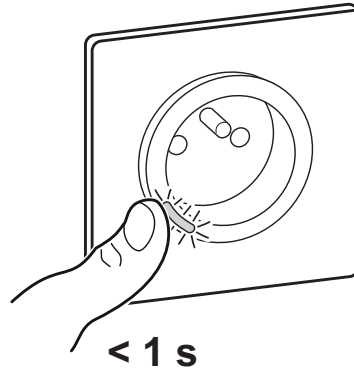
**NOTE:** All configuration data, user data and network data are deleted.



## Using the device

### Switching operation manually


You can turn On/Off the Socket outlet manually by pressing the push-button. The LED turns red (default settings), which indicates the power output is On from the Socket Outlet.

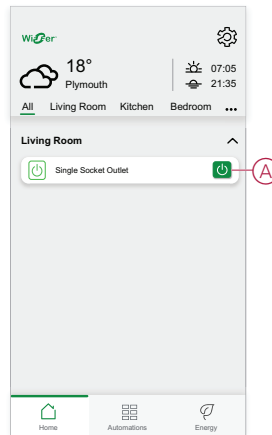


## Switching operation using the app

Using the Wiser Home app, you can turn On/Off the Socket outlet remotely.

To turn on/off the Socket outlet:



1. Go to the Home page, tap **All** devices or a room tab where the Socket outlet is located.
2. Tap  (A) to turn On/Off the Socket outlet.

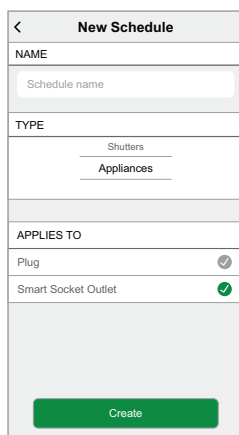


## Create or assign a schedule

Using the Wiser Home app, you can create or assign a schedule to the Socket outlet.

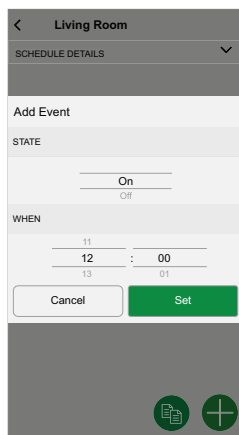
To create or assign a schedule:


1. On the **Home** page, tap .
2. Go to **Schedule** tab, tap .
3. Enter the Schedule name and select **Appliances** from the **TYPE** menu.
4. Select the **Smart Socket Outlet** from the **APPLIES TO** menu and tap **Create**.




The next screen shows by default an Event for the week that can be modified.

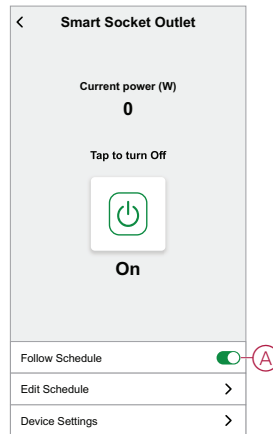
5. Tap  to add an event such as **STATE** (on/off) and **WHEN** (sunrise/sunset or specific time range).



**NOTE:** Tap  to copy the schedule from one day to other days or copy the entire schedule to a new schedule or to an existing one.

- Tap **Set** to save the schedule.

**NOTE:** On the home page, use the  (A) to turn on/off **Follow Schedule**.

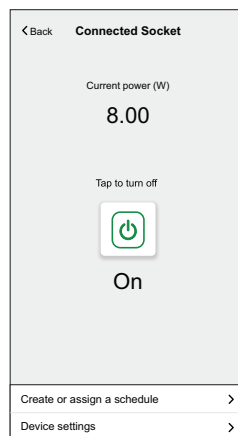


## Monitoring energy consumption

Using the Wisier app, you can monitor the energy consumption of the load connected to the device.

To check the energy consumption:

- On the **Home** page, tap **All devices > Connected Socket**.
- When the socket outlet is turned on, the power consumption is displayed in watts (W).





**TIP:** The power consumption varies depending on the load connected to the socket outlet.

## Creating a moment

Moment allows you to group multiple actions that are usually performed together. By using the Wisier Home app, you can create moments based on your needs.

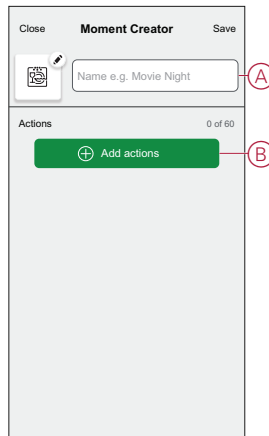
To create a moment:

- On the **Home** page, tap .
- Go to **Moments > +** to create a moment.
- Enter the name of the moment (A).

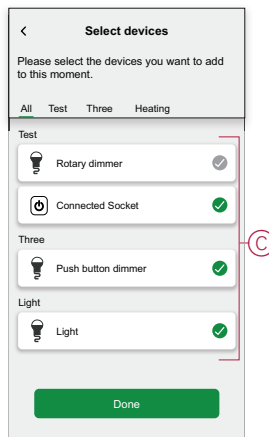
**TIP:** You can choose the cover image that best represents your moment by tapping .



4. Tap **Add actions** (B) to select the list of devices.



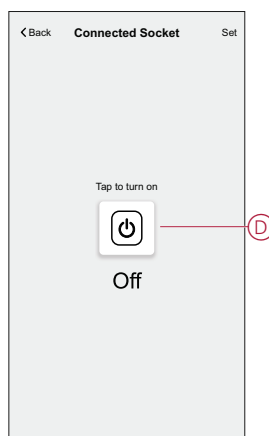
5. In the **Add actions** menu, you can select the devices (C).



6. Once all the device are selected, tap **Done**.

7. On the **Moment creator** page, tap on the device to set the condition. For example, select connected socket.

– Tap  (D) to turn on.





When the desired condition is set, tap **Set**.

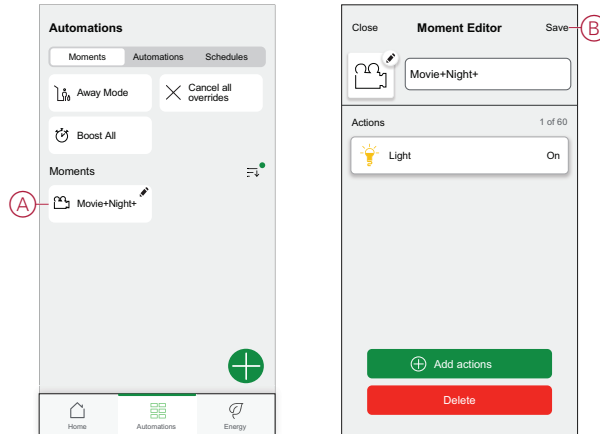
8. Once all conditions are set, tap **Save**.

Once the moment is saved, it is visible on the **Moments** tab. You can tap on the moment to enable it.

## Editing a moment



To edit a moment:

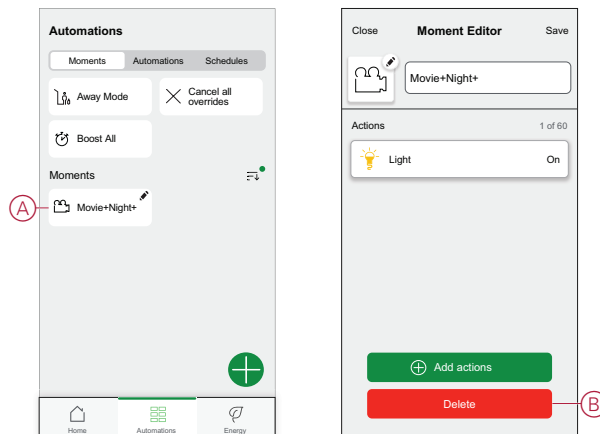
1. On the **Home** page, tap .
2. Go to **Moments**, locate the moment you want to edit and tap  (A).
3. On the **Moment Editor** page, you can tap each item to change the settings and tap **Save** (B).



## Deleting a moment

To delete a moment:

1. On the **Home** page, tap .
2. Go to **Moments**, locate the moment you want to delete and tap  (A).
3. On the Moment Editor page, tap **Delete** (B) and tap **Ok**.



## Creating an automation

An automation allows you to group multiple actions that are usually done together, triggered automatically or at scheduled times. By using the Wiset app, you can create automations based on your needs.

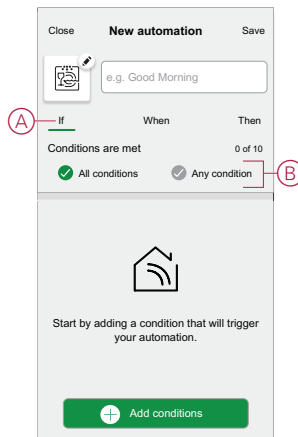
To create an automation:

1. On the **Home** page, tap .
2. Go to **Automation** >  to create an automation.

**NOTE:** Max. 10 automations can be added.

3. Tap **If** (A) and select any of the following conditions (B):

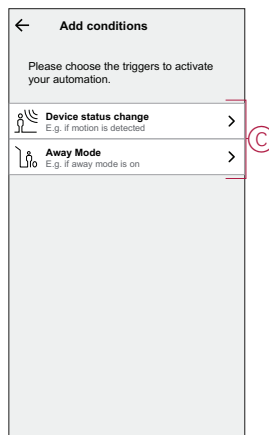
- **All conditions:** This triggers an action only when all conditions are met.
- **Any condition:** This triggers an action when at least one condition is met.




4. Tap **Add conditions** and select any of the following (C):

- **Device status change:** Select a device to enable automation.
- **Away Mode: Enable / Disable** away mode to trigger an action.

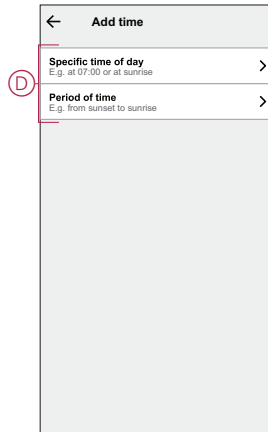
**TIP:** Away mode can also be used as a trigger to turn off the lights, dimmer or closing the shutter etc. For more information refer to *Away mode*.




**NOTE:**

- Max. 10 conditions can be added.
- To remove an added condition, swipe left and tap .

5. To set a specific time for your automation, tap **When** > **Add time** and select any of the following (D):
- **Specific time of the day: Sunrise, Sunset, Custom.**
  - **Period of time: Daytime, Night time, Custom.**

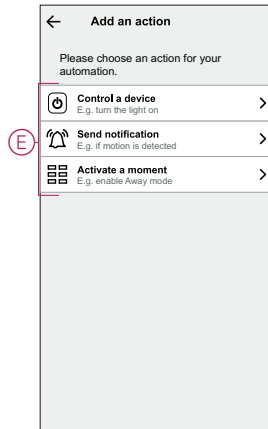


**NOTE:**

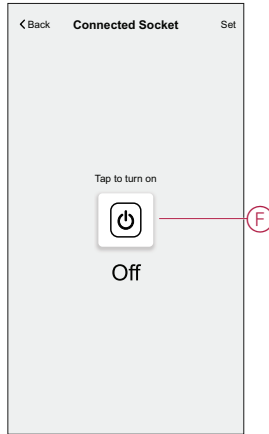
- Max. 10 entries can be added.
- To remove a specific time, swipe left and tap .

6. To add an action, tap **Then** > **Add an action** and select any of the following (E):


- **Control a device:** Select a devices that you want to trigger.
- **Send notification:** Turn on the notification for the automation.
- **Activate a moment:** Select the moment that you want to trigger.




7. Tap **Control a device** > **Connected Socket**, tap  (F) to turn on/off, then tap **Set**.

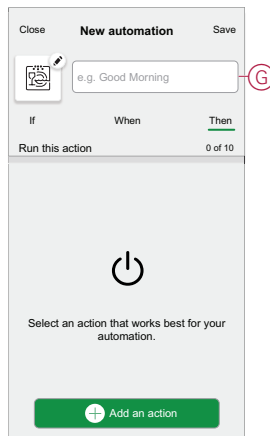


**NOTE:**

- Max. 10 actions can be added.
- To remove an action, swipe left on the action and tap .


8. Enter the automation name (G).

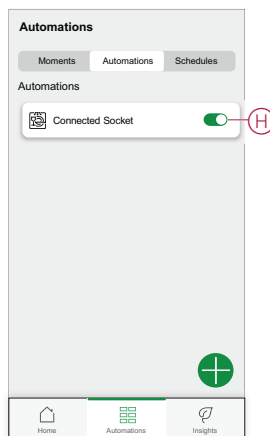
You can choose the cover image that represents your automation by tapping .



9. Tap **Save**.

Once the automation is saved, it is visible on the **Automation** tab.

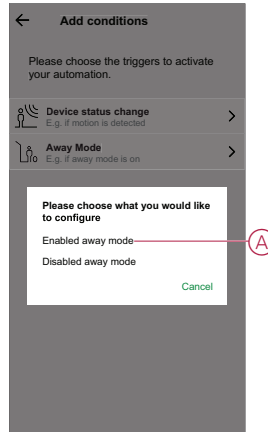
Using the  (H) you can enable or disable the automation.



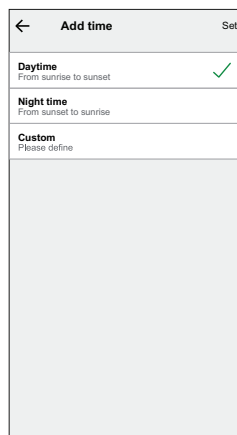
## Example of an automation

In the example below, if away mode is enabled during daytime then the Connected Socket will turn Off.

1. Go to **Automation** > **+** to create an automation.
2. To add a condition, tap **Add Condition** > **Away Mode** > **Enabled away mode (A)**.

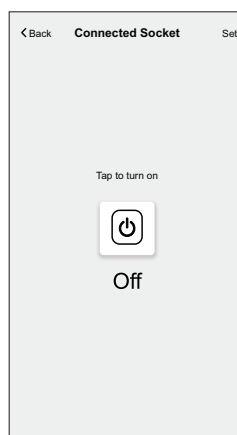


3. Read the information and tap **OK**.
4. To set the time, tap **When** > **Add time** > **Period of time** > **Day time** > **Set**.




5. To add an action, tap **Then** > **Add an action** > **Control a device** > **Connected Socket** > **Set**.

**TIP:** You can turn on/off the socket.



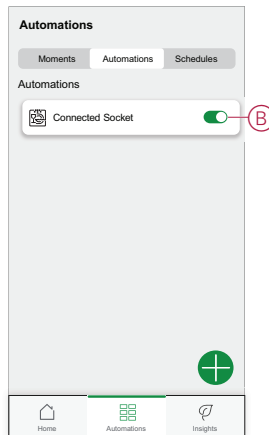
6. Read the information and tap **OK**.


7. Enter the name of the automation.

**TIP:** You can choose the cover image that represents your automation by tapping .

8. Tap **Save**.


Once the automation is saved, it is visible on the **Automation** tab.

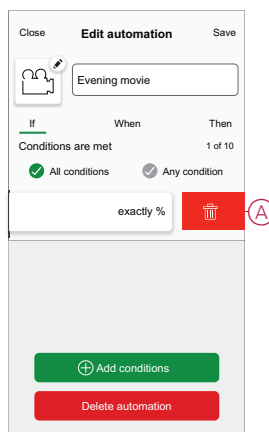


**NOTE:** You can enable or disable automations on the **Automation** tab by using  (B).

## Editing an automation

To edit an automation:


1. On the **Home** page, tap .
2. Go to **Automation**, tap the automation you want to edit.
3. On the **Edit automation** page, you can:
  - Change the icon.
  - Rename the automation.
  - Change/Delete the condition or action.
4. Remove the Condition or Action by swiping it to the left and tapping the **bin** (A).

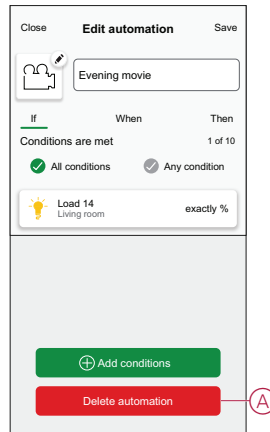


5. Add a new condition or action and then tap **Save**.

## Deleting an automation

To delete an automation:



1. On the **Home** page, tap .
2. Go to **Automation**, tap the automation you want to delete .
3. On the Edit automation page, tap **Delete Automation (A)** and tap **Ok**.







## LED indications



### Pairing the device

User Action	LED Indication	Status
Press the push button 3 times	LED blinks amber, once per second. 	Pairing mode is active for 30 seconds. When pairing is completed, LED displays solid green for a time, before turning Off. 


### Resetting the device

User Action	LED Indication	Status
Press the push button 3 times and hold it down once for > 10 s.	After 10 s, the LED starts blinking red. 	The device is in reset mode. It is reset to the factory settings after 10 seconds. The device then restarts, and the LED glows solid orange. 

### Setting (Default state)

LED Indication	Description
The Red LED glows. 	The Red LED glows when the output is switched ON.
All the LEDs are OFF. 	The LEDs are OFF, when the output is OFF.



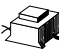


### Alarms

LED Indication	Description
Blinking red fast 	When there is an overload or over-temperature alarm and the device is switched off. Refer to the Troubleshooting, page 25 to clear the alarms.

## Troubleshooting

Symptom	Possible cause	Solution
The Socket outlet is not turning ON.	The Socket outlet is broken, or there could be an alarm if the LED blinks red.	First, power cycle the Socket outlet and check if it works afterwards. If it is still not working, you can replace the Socket outlet.
User cannot switch ON the output locally or remotely until the alarm is cleared. LED blinks fast RED.	Clear the Socket outlet alarms.	To clear the alarm, press and hold the push button for 4 seconds. After 4 seconds, the blinking will stop and the alarm will be cleared, you can use the Socket outlet again. Before clearing the alarm, you should take care of the reason why overload/temperature happened for safety.

## Technical Data

Nominal power rating for load type		
	Incandescent lamp	2000 W
 LED	LED	100 W, 12 $\mu$ F
	Iron core transformer	1500 VA
 (M)	Motor	1600 VA, max 7 A
	Electronic step-down converter	2000 VA
<b>R</b>	Resistance	3680 W
<b>C</b>	Capacitance	6 AX, max. 70 $\mu$ F
<b>L</b>	Inductance	16 A, $\cos \varphi = 0.6$

Nominal voltage:	AC 230 V~, 50 Hz
Standby:	max 0.4 W
Fuse protection:	16 A miniature circuit breaker
Connecting terminals:	Terminals for max. 2x2.5 mm <sup>2</sup>
Operating frequency:	2405-2480 MHz
Max. radio-frequency power transmitted:	< 10 mW
Protection:	IP20
Measuring accuracy:	$\pm 1$ %for loads > 25 W
Communication protocol:	Zigbee 3.0 certified

# Compliance

## Compliance information for Green Premium products

Find and download comprehensive information about Green Premium products, including RoHS compliance and REACH declarations as well as Product Environmental Profile (PEP) and End-of-Life instructions (EOLI).

<https://checkaproduct.se.com/>



## General information about Green Premium products

Click the link below to read about Schneider Electric's Green Premium product strategy.

<https://www.schneider-electric.com/en/work/support/green-premium/>



## Trademarks

This guide makes reference to system and brand names that are trademarks of their relevant owners.

- Zigbee® is a registered trademark of the Connectivity Standards Alliance.
- Apple® and App Store® are brand names or registered trademarks of Apple Inc.
- Google Play™ Store and Android™ are brand names or registered trademarks of Google Inc.
- Wi-Fi® is a registered trademark of Wi-Fi Alliance®.
- Wiser™ is a trademark and the property of Schneider Electric, its subsidiaries and affiliated companies.

Other brands and registered trademarks are the property of their respective owners.

Schneider Electric  
35 rue Joseph Monier  
92500 Rueil Malmaison  
France

+ 33 (0) 1 41 29 70 00

[www.se.com](http://www.se.com)

As standards, specifications, and design change from time to time,  
please ask for confirmation of the information given in this publication.

© 2023 – Schneider Electric. All rights reserved.

DUG\_Ovalis SSO\_WH-02