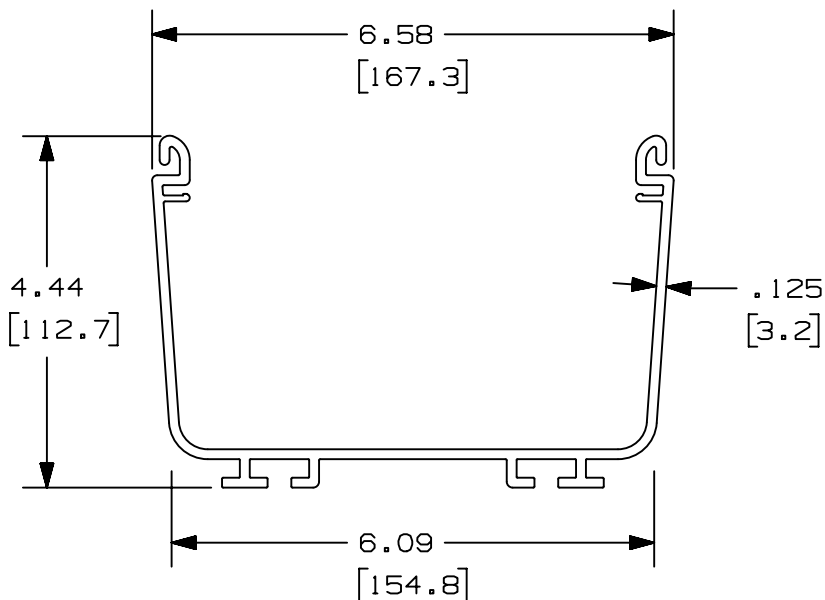


2

1

THIS COPY IS PROVIDED ON A RESTRICTED BASIS AND IS NOT TO BE USED IN ANY WAY DETRIMENTAL TO THE INTERESTS OF PANDUIT CORP.

PANDUIT PART NUMBER	LENGTH	WEIGHT	WEIGHT/LENGTH
FR6X4**6 (SEE NOTE 1)	72.00 IN ±.18 IN. (1828.8 mm ±4.6 mm.)	8.0 LB (3628g)	1.34 LB/FT (19.8g/cm)
FR6X4**2 (SEE NOTE 1)	78.74 IN ±.18 IN. (2000.0 mm ±4.6 mm.)	8.8 LB (3990g)	1.34 LB/FT (19.8g/cm)
FR6X4**3 (SEE NOTE 1)	118.11 IN ±.18 IN (3000mm ±4.6mm)	13.2 LB (5985g)	1.34 LB/FT (19.8g/cm)
FR6X4**10 (SEE NOTE 1)	120.00 IN ±.18 IN (3048mm ±4.6mm)	13.4 LB (6076g)	1.34 LB/FT (19.8g/cm)



NOTES:

1. SEE CURRENT CATALOG FOR ADDITIONAL PART SUFFIXES TO INDICATE COLOR AND OR PACKAGE QUANTITY.
2. DIMENSIONS IN PARENTHESIS ARE IN METRIC.

B

B

A

A

REV	DATE	BY	CHK	APR	DESCRIPTION	ECN
5	5/11/2021	MES	PATR	PATR	ADDED PART NUMBERS FR6X4**3, FR6X4**10	V09002MM/00

TITLE 6x4 FIBERRUNNER BASE (FR6X4**6, FR6X4**2, FR6X4**3, FR6X4**10) CUSTOMER DRAWING					
ITEM REVISION NAME D37185CC/03	PANDUIT				
DATASET FILE NAME D37185CC_DC/03A					
UNLESS OTHERWISE SPECIFIED, DIMENSIONAL TOLERANCES ARE: UNLESS OTHERWISE SPECIFIED, DIMENSIONAL TOLERANCES ARE: (.X) ± (.XXX) ± (.XX) ± .06 ANGLES ±	MATERIAL: PVC				
THIRD ANGLE PROJECTION 	DRAWING NUMBER: 37185-82				
DRAWN BY JHNU	DATE 5-11-00	CHK NEY	SCALE NONE	SHT 1 OF 1	SIZE A

2

1

D10100DA/20