

## Ex-drainage plug



### Breathing & drainage plug

#### Technical data

##### Ex-e Breathing and drainage plug

Marking accd. to 2014/34/EU	II 2 G Ex e II
EC-Type Examination Certificate	SIRA 99 ATEX 3050 U
IECEX Certificate of Conformity	IECEX SIR 08.0024X
Marking accd. to IECEx	Ex e IIC Gb / Ex eb IIC Gb / Ex tb IIIC Db IP66
Permissible ambient temperature	-50 °C to +85 °C
Degree of protection accd. to EN 60529	IP66
Enclosure material	Polyamide

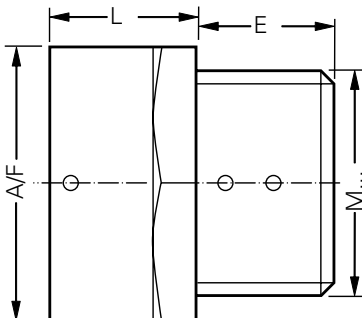
#### Ordering details

Type	Thread	A/F mm	L mm	E mm	Weight kg	OU	Order No.
Breathing and Drainage plug	M20 x 1.5	40	17	15	0.03	20	<b>GHG 960 1954 R0014</b>
	M25 x 1.5	40	17	15	0.03	20	<b>GHG 960 1954 R0002</b>

The order No. will show 1 pcs.

Please note that only order units (OU) can be ordered.

#### Dimension drawing



Breathing and Drainage plug

Dimensions in mm