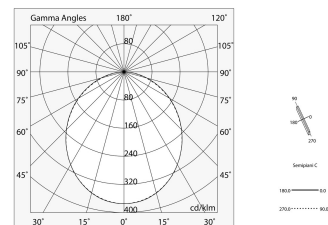
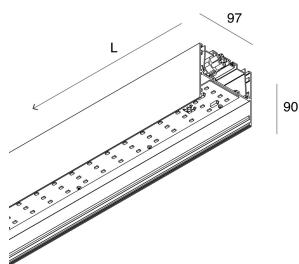
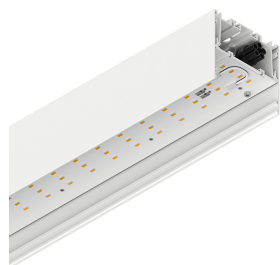


LUCKY MAXI

106214.01 + 106219.99

novalux

ITALIAN LIGHTING DESIGN SINCE 1948



Features

Use: Indoor
Type of installation: SUSPENDED, CEILING MOUNTED
Emission: DIRECT
Optics: OPAL
Colour: WHITE
Dimming: ON/OFF
Emergency: Autonomy 1h/Recharge time 12h
L: 1200mm
A: 97mm
H: 90mm
Made in: ITALY
Warranty: 5 years except battery
Weight: 5.63kg

Tech data

Luminaire input power: 42W
Luminaire luminous flux: 2237lm
Luminous flux in emergency: 11%
IP: 40
Insulation class: I
Supply voltage: 220-240V 50/60Hz
SELV: Si

Source

Light source: LED
Source power: 36W
Source luminous flux: 5040lm
Colour temperature: 4000K
CRI: >90
Colour tolerance: 3 Step MacAdam
LED lifespan: 50000h L80 B20

Compliance

CEI EN 60598-1:2015 + A11:2009. IEC 60598-2:2015 2-1, 2-22

Standards

Photobiological risk: RISK GROUP 0 Certified fixture in EXEMPT GROUP, in accordance with CEI EN 62471:2010-01, IEC TR 62778:2014.

CAM edilizia: The product complies with the requirements for public buildings, ministerial decree of 23rd June 2022 n.256.

[View more product info](#)



Novalux S.r.l. via Marzabotto, 2 40050 Funo di Argelato (BO) Italy
Tel: +39 051 860558 · Fax +39 051 6647859 · Mail: info@novalux.it · VAT number 00536541204 · novalux.com
Company subject to the management and coordination by SLV GmbH

This technical data sheet is owned by Novalux S.r.l., all rights reserved. Novalux S.r.l. reserves the right to make changes without prior notice.

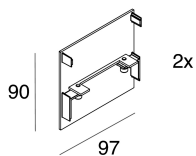
LUCKY MAXI

106214.01 + 106219.99

novalux

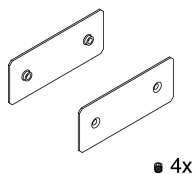
ITALIAN LIGHTING DESIGN SINCE 1948

COMPLETION ACCESSORIES



LUCKY MAXI: TESTATE BIANCHE (COPPIA)

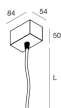
106230.01



LUCKY MAXI: KIT DI GIUNZIONE

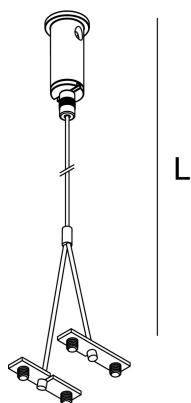
106231.99

MOUNTING ACCESSORIES



KIT ALIMENTAZIONE L3000 3P BIA

108920.01



LUCKY MAXI: KIT SOSPENSIONE 3000 (1 PZ)

106229.99



Novalux S.r.l. via Marzabotto, 2 40050 Funo di Argelato (BO) Italy
Tel: +39 051 860558 · Fax +39 051 6647859 · Mail: info@novalux.it · VAT number 00536541204 · novalux.com
Company subject to the management and coordination by SLV GmbH

This technical data sheet is owned by Novalux S.r.l., all rights reserved. Novalux S.r.l. reserves the right to make changes without prior notice.