

Ovalis - Connected Blind Control Switch

Device user guide

Information about features and functionality of the device.

07/2023

Legal Information

The Schneider Electric brand and any trademarks of Schneider Electric SE and its subsidiaries referred to in this guide are the property of Schneider Electric SE or its subsidiaries. All other brands may be trademarks of their respective owners.

This guide and its content are protected under applicable copyright laws and furnished for informational use only. No part of this guide may be reproduced or transmitted in any form or by any means (electronic, mechanical, photocopying, recording, or otherwise), for any purpose, without the prior written permission of Schneider Electric.

Schneider Electric does not grant any right or license for commercial use of the guide or its content, except for a non-exclusive and personal license to consult it on an "as is" basis. Schneider Electric products and equipment should be installed, operated, serviced, and maintained only by qualified personnel.

As standards, specifications, and designs change from time to time, information contained in this guide may be subject to change without notice.

To the extent permitted by applicable law, no responsibility or liability is assumed by Schneider Electric and its subsidiaries for any errors or omissions in the informational content of this material or consequences arising out of or resulting from the use of the information contained herein.

Table of Contents

Safety information	4
Ovalis - Connected Blind Control Switch	5
For your safety	5
About the device	5
Installing the device	5
Pairing the device with Wiser Hub	6
Configuring the device	7
Selecting the device location	7
Renaming the device	8
Selecting device type	8
Setting the default run time	9
Shutter Calibration	10
Setting Summer Comfort Mode	14
Identifying the device	18
Removing the device from Wiser system	19
Resetting the device	19
Using the device	20
Operating the device manually	20
Opening/Closing the shutter using app	20
Setting up a schedule	21
Moments	23
Automation	26
LED Indication	30
Troubleshooting	30
Technical Data	31
Compliance	32
Compliance information for Green Premium products	32
Trademarks	32

Safety information

Important information

Read these instructions carefully and look at the equipment to become familiar with the device before trying to install, operate, service, or maintain it. The following special messages may appear throughout this manual or on the equipment to warn of potential hazards or to call attention to information that clarifies or simplifies a procedure.



The addition of either symbol to a “Danger” or “Warning” safety label indicates that an electrical hazard exists which will result in personal injury if the instructions are not followed.



This is the safety alert symbol. It is used to alert you to potential personal injury hazards. Obey all safety messages that accompany this symbol to avoid possible injury or death.

DANGER

DANGER indicates a hazardous situation which, if not avoided, **will result in** death or serious injury.

Failure to follow these instructions will result in death or serious injury.

WARNING

WARNING indicates a hazardous situation which, if not avoided, **could result in** death or serious injury.

CAUTION

CAUTION indicates a hazardous situation which, if not avoided, **could result in** minor or moderate injury.

NOTICE

NOTICE is used to address practices not related to physical injury.

Ovalis - Connected Blind Control Switch



S3X0567W

For your safety

⚡ ⚠ DANGER
HAZARD OF ELECTRIC SHOCK, EXPLOSION, OR ARC FLASH
Safe electrical installation must be carried out only by qualified electrical personnel. Qualified electrical personnel must prove profound knowledge in the following areas:
<ul style="list-style-type: none">• Connecting to installation networks• Connecting several electrical devices• Laying electrical cables• Safety standards, local wiring rules, and regulations
Failure to follow these instructions will result in death or serious injury.

About the device

You can use the Connected Blind Control Switch (hereinafter referred to as **blind control switch**) to control one blind or roller shutter motor that is equipped with an end position switch.

Control options

Home control using Wisier Home app: To control the blind control switch through the Wisier app you will need the **Wisier Hub**. Refer to *Pairing the device*, page 6.

Direct operation: The blind control switch can always be controlled directly on-site. You can also connect it with mechanical double push-buttons. Refer to *Manual operation*, page 20.

Installing the device

Refer to the installation instructions supplied with this product.

Pairing the device with Wiser Hub

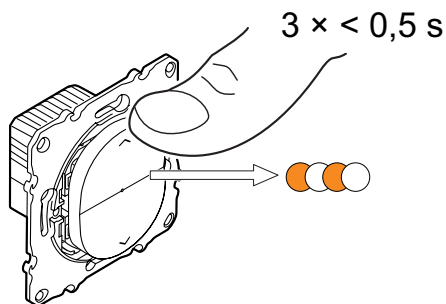
Using the Wiser Home app, pair your blind control switch with the **Wiser Hub** to access and control the blind control switch.

To pair the blind control switch:

1. On the **Home** page, tap .
2. Tap **Devices** >  and **Shutters** > **1-Gang Switch** > **Next**.

NOTE: The next screen shows the joining process of the blind control switch.

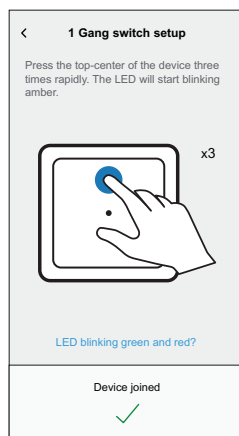
3. Short press the push button 3 times and make sure that the LED blinks amber.





4. Wait for a few seconds until the LED turns green.

The device is joined.

NOTE: If the LED is blinking green and red, see the instructions by tapping the link **LED blinking green and red?**.



5. Tap , enter a name of the device, tap **Next** and assign the device to a new room or an existing room.
6. Tap **Next** >  and select a **Device Type**:
 - **Shutter**: Proceed to step 7
 - **Shutter with tilting slats**: Proceed to step 8 and step 9.
7. Tap **Shutter** > **Next** and enter the open/close duration of shutter. Refer to [Setting default run time](#), page 9.
8. Tap **Shutter with tilting slats** > **Slat Type**, select a slat type and tap **Set**:
 - Horizontal
 - Tilted
 - Vertical

9. Tap **Next** and enter the following durations:

- a. **Open duration:** Time taken to open the shutter.
- b. **Close duration:** Time taken to close the shutter.
- c. **Tilt duration:** Time taken to rotate the slats completely from closed to open position.

Refer to Setting default run time, page 9.


10. Tap **Submit**.

Once the pairing process is completed, the device name (example, Blind control switch) is listed under **All** devices in **Home** page.

Configuring the device

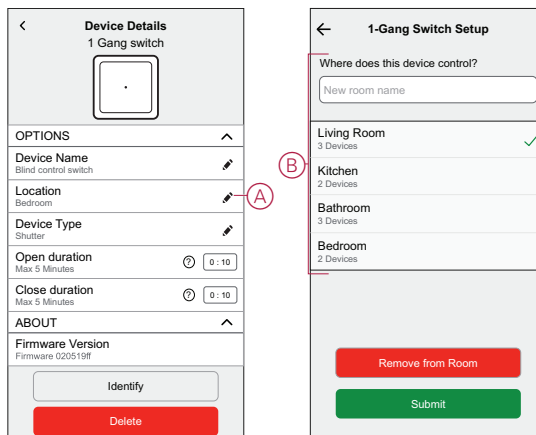
Selecting the device location

Using the Wiser Home app, add the blind control switch to any room (such as living room, bedroom, kitchen etc).

1. On the Home page, tap .
2. Tap **Devices > Shutters > Blind control switch or Shutter slat > Location** (A) to assign the blind control switch to an existing room or a new room (B) and tap Submit.


NOTE:

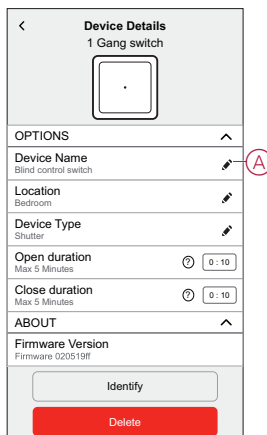
- Tap **Remove from Room** to remove the device from the existing room.
- Blind control switch is the name given to the device by the user when pairing with the **Wiser Hub**. You can assign a name according to your shutter type. Example, Shutter slat.



Renaming the device

You can rename the device using the Wisier Home app.




1. On the Home page, tap .
2. Tap **Devices > Shutters > Blind control switch > Device Name (A)** to rename the device.

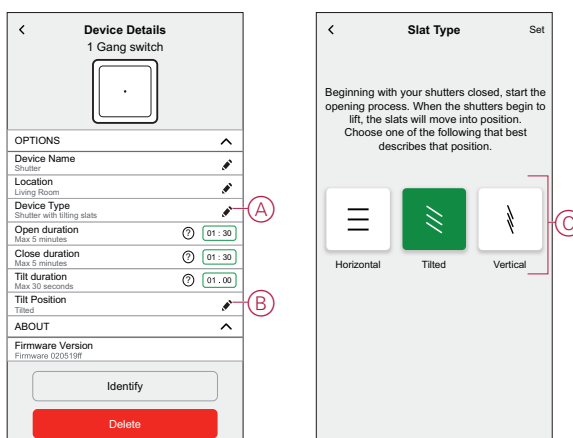


Selecting device type

Using the Wisier Home app, you can change the device type according to your need.

NOTE: The device type was selected as **Shutter** when pairing with the **Wisier Hub**. You can change the device type as **Shutter with tilting slats** if it has a tilt function.

1. On the Home page, tap .
2. Tap **Devices > Shutters > Blind control switch**.
3. Tap  (A) and select a device type.
4. If the device type is selected as **Shutter with tilting slats**, tap  (B) and select a slat type (C).
5. Tap **Set**.



Setting the default run time

Each shutter motor varies in the time it takes to complete the opening/closing movement (i.e., edge to edge). Therefore, the opening/closing time of the shutter must be determined in the app.


To determine the default run time, manually open/close the shutter.

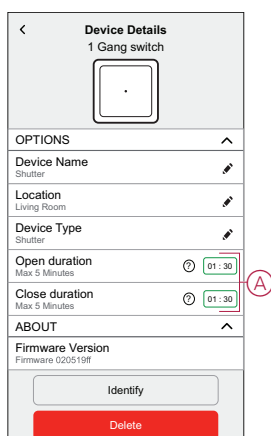
1. Record the time it takes to open/close the shutter completely.
2. Record the time it takes to rotate the slats completely from closed to open position for shutter with tilting slats.

Follow the procedure according to your shutter type:


- Shutter, page 9
- Shutter with tilting slats, page 10

Shutter

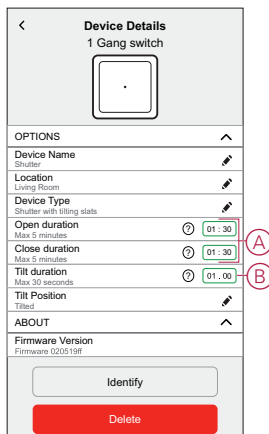
1. On the Home page, tap .
2. Tap **Devices > Shutters > Shutter**.
3. Tap **Open duration/Close duration (A)** and enter the recorded shutter opening/closing time.



Shutter with tilting slats

1. On the Home page, tap .
2. Tap **Devices > Shutters > Shutter with tilting slats**
3. Tap **Open duration/Close duration (A)** and enter the recorded shutter opening/closing time.
4. Tap (B) and enter the slat tilt duration according to the tilt position.

IMPORTANT: The minimum value to set the default time for Tilt duration is 01.00 s. If you set a value less than 01.00 s, it will not be saved.



Shutter Calibration

Shutter calibration with Wiser app

The shutter motor is supplied in an uncalibrated state. Each shutter motor varies in the time it takes to complete the opening/closing movement (i.e., edge to edge).

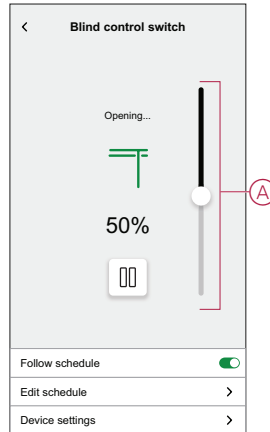
IMPORTANT:

- It is necessary to select the device type and set the default run time before proceeding with shutter calibration. Refer to [Selecting device type](#), page 8 and [Setting default run time](#), page 9.
- Do not use the shutter either manually or on the app during calibration to avoid interruption.
- Follow the procedure for shutter calibration according to the device type: **Shutter** or **Shutter with tilting slats**.

Shutter

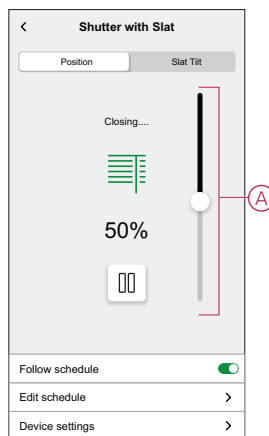
1. Upon setting the default run time, go to the Home page, tap **All** and find the device.
2. On the control panel page, drag the sliding bar up/down to set the desired shutter opening percentage (A).

The shutter opens completely and then it reaches to the desired position set in step 2. The shutter is now calibrated.

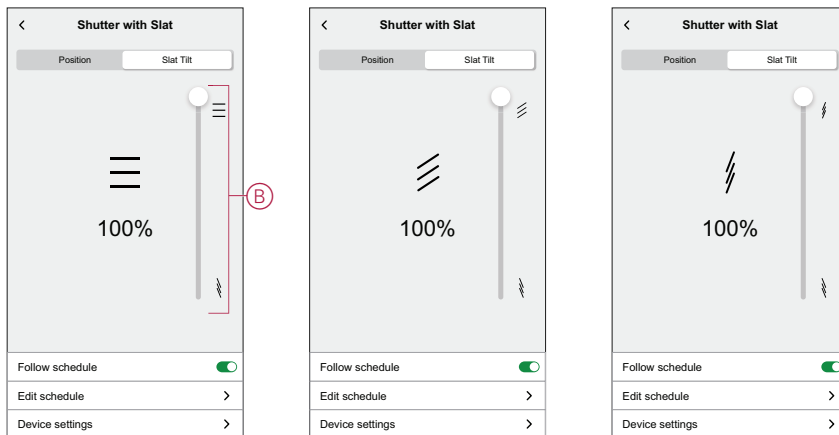


Shutter with tilting slats

1. On the Home page, tap **All** and find the device.
2. On the control panel page, in the **Position** tab, drag the sliding bar up/down to set the desired shutter opening percentage (A).



3. Tap **Slat Tilt** tab, drag the sliding bar up/down to set the desired shutter opening percentage (B) according to any one of the following tilt position:
 - Horizontal
 - Tilted
 - Vertical

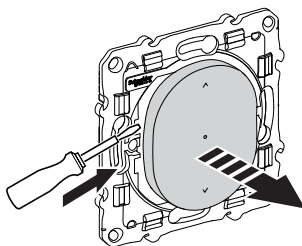


Shutter Calibration without Wiser app

To set the calibration without Wiser app:

1. Remove the rocker from the Blind control switch.

NOTE: Removing the rocker helps to use both top and bottom push-buttons together. Without removing the rocker, you can use either top or bottom push-button.

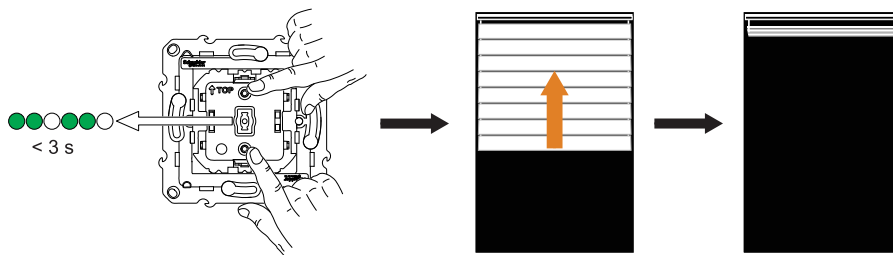


2. Press bottom and top push-buttons for 3 seconds.

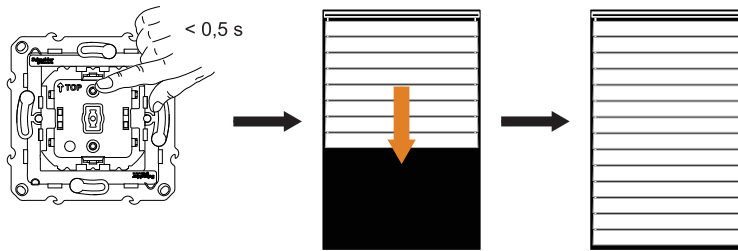
The status LED blinks green.

- If the shutter is not in a completely open position, it starts to open and reaches the top position.
- In this step, If the shutter is already in the open position, then there will be no movement of the shutter.

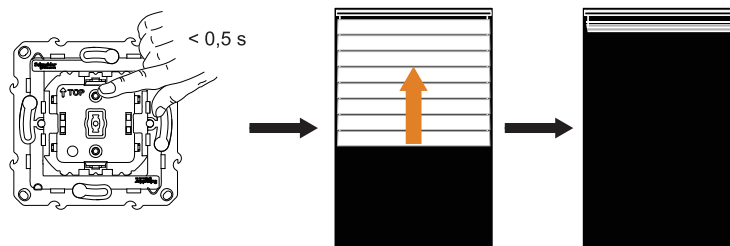
NOTE: LED blinks green throughout the calibration process.



3. Short press the top push-button when the shutter opens completely.
The shutter starts to close and reaches the bottom position.

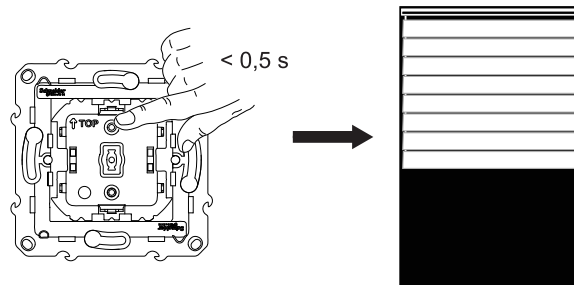


4. When the shutter reaches the bottom position, immediately press the top push-button once.
The shutter starts to open and reaches the top position.

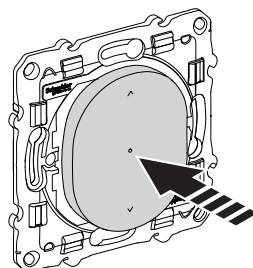


5. When the shutter reaches the top position, immediately press the top push-button once.
Shutter starts to move and automatically reaches a middle position to finish the calibration.

NOTE: The exact shutter position depends on the shutter type, motor and mechanical construction. Based on this, the middle position will differ.



6. Reassemble the rocker on the Blind control switch.




Setting Summer Comfort Mode




The **Summer Comfort Mode** automatically adjusts the shutters to a specific position when temperature is too hot both indoor and outdoor. This solution passively cools your home by lowering your shutters.

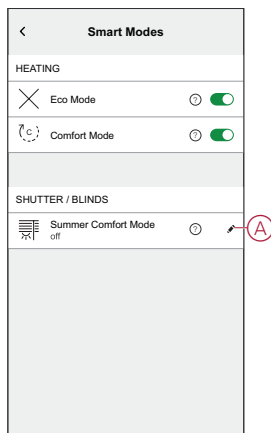
Features:


- The inside temperature is measured by sensor and the outside temperature is measured based on your location.
- Works only when the sun is out (during daytime).
- By default the blinds closes to 50%
- This feature is active only when there is minimum of 2 degrees difference between inside and outside temperature. For example: Inside temperature a minimum of 26 degrees, while the outside temperature a minimum of 28 degrees.

Pre-requisite:

- You must have a temperature sensor to measure the indoor temperature.
- Add address to your account. Tap  > **Account** > **My Home**.
- Calibrate your shutters. Refer to *Shutter calibration*, page 10 or *Shutter calibration with titling slats*, page 10 based on the shutter type.

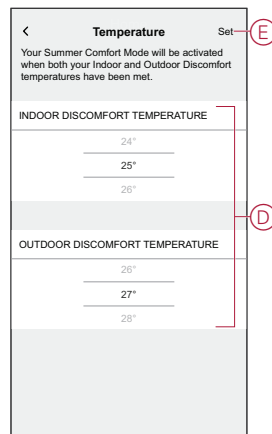
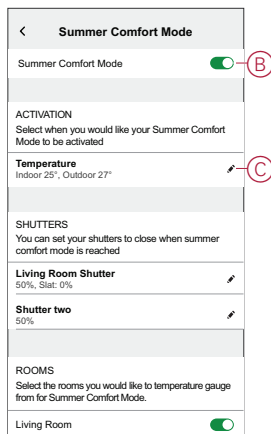
1. On the **Home** page, tap  > **Smart Modes**.
2. Tap  to view information about **Summer Comfort Mode**.
3. Tap  (A) to go to the **Summer Comfort Mode** configuration page.




4. Tap the toggle switch (B) to enable **Summer Comfort Mode**.
5. Tap  (C) to set the temperature.
6. Select the indoor and outdoor discomfort temperature (D).

NOTE: Indoor temperature must be lower than your outdoor temperature. (minimum of 2 degrees difference between inside and outside).


7. Tap **Set** (E).



8. Tap  **Living Room Shutter** (F) and enable the toggle switch (G).

NOTE:

- Only the shutters that are eligible for Summer comfort mode will be shown.
- Example, if you have installed both shutters and temperature sensor in your home. Summer comfort mode will measure the ambient temperature sensed in any room and control all the shutters except the legacy ones.

9. Tap  **Shutter Controls** (H), set the shutter position (I) according to the shutter type and tap **Set**.

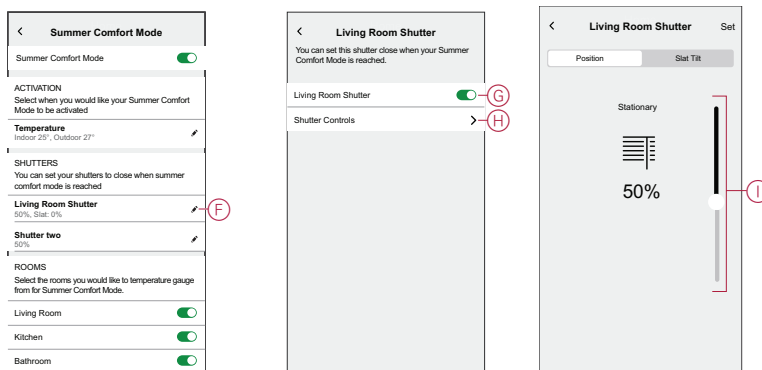
The following demonstration is shown for shutter with tilting slats.



• **Shutter with tilting slats:**

- In the **Position** tab, drag the sliding bar (I) up/down to set the desired shutter opening percentage.
- Tap **Slat Tilt** tab, drag the sliding bar up/down to set the desired shutter opening percentage according to the tilt position: Horizontal, Tilted, Vertical.

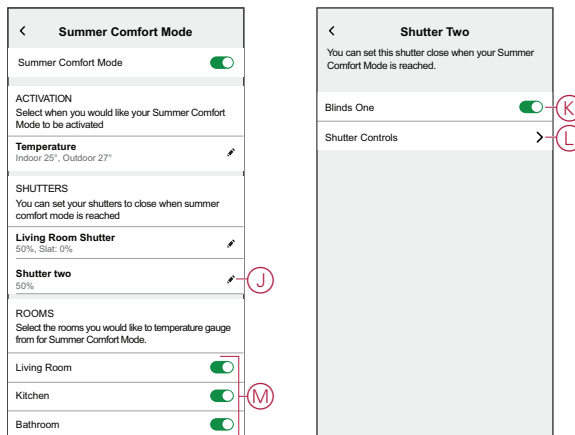
IMPORTANT:

- By default the shutter position is set to 50%
- The shutter must not close to 100% to avoid any problems like someone stuck outside (their balcony or garden).



10. Tap  (J) and enable the toggle switch (K) to set the shutter position.
 - a. Tap  **Shutter Controls** (L) and drag the sliding bar up/down to set the desired shutter opening percentage and tap **Set**.

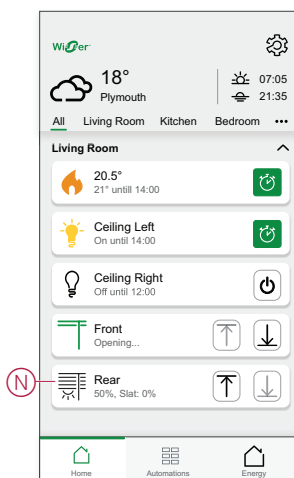
TIP: All rooms are enabled by default, you can enable or disable the rooms of your choice (M). Example, you can disable the rooms which cause nuisance triggers (conservatories, utility rooms).



The shutters set as **Summer Comfort Mode** appears on the **Home** page.

NOTE:


- If any change is required, tap (N) > **Device settings > Summer Comfort Mode > Shutter controls** and set the shutter position.
- To disable the **Summer Comfort Mode** specific to a shutter, tap (N) > **Device settings > Summer Comfort Mode** and disable the toggle switch.

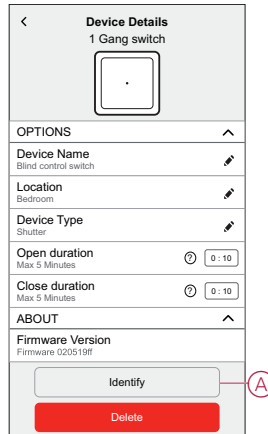


- To disable the **Summer Comfort Mode** completely, tap  > **Smart Modes > Summer Comfort Mode** and disable the toggle switch.

Identifying the device

Using the Wiser Home app, identify the blind control switch among the devices available in a home.

1. On the Home page, tap .
2. Tap **Devices > Shutters > Blind control switch** or **Shutter slat > Identify (A)**.




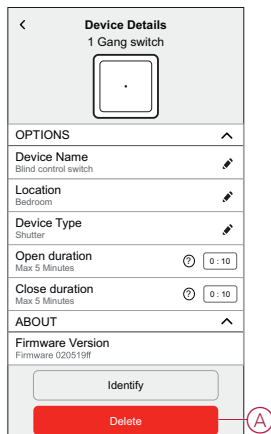
The status LED blinks red and the shutter opens/closes gradually, upon successful identification of the blind control switch or shutter slat.

3. Tap **OK** to finish identifying the device.

Removing the device from Wiser system

Using the Wiser app, you can remove the blind control switch from the system. To remove the device:

1. On the Home page, tap .
2. Tap **Devices > Shutters > Blind control switch** or **Shutter slat > Delete (A)**.



NOTE:

- Removing the device will reset the blind control switch. The LED starts blinking amber indicating that the blind control switch is ready for pairing.
- If there is a problem while pairing or resetting the blind control switch, refer to [Resetting the device](#), page 19.

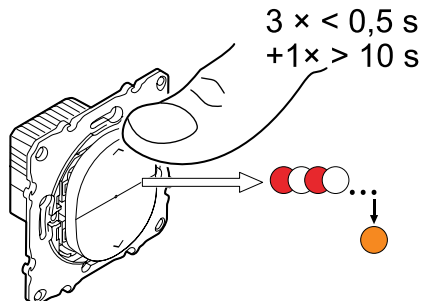
Resetting the device

You can reset the device to factory default manually.

Short-press the push button three times (<0.5 s) and then long-press the push button once (>10 s).
The LED blinks red after 10 s, and then release the push button.

Upon successful reset, the LED stops blinking. Then, the device restarts and blinks green for a few seconds.

NOTE: After reset, the LED turns amber indicating that it is ready for pairing.

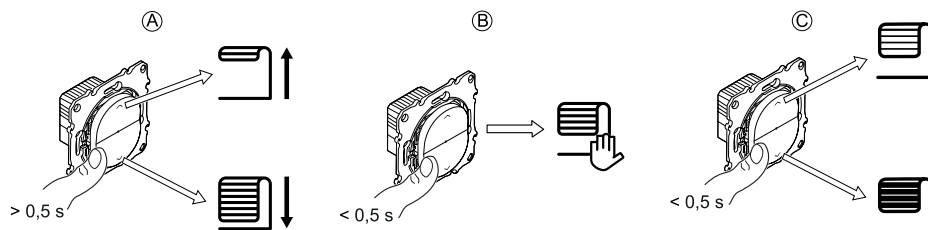


Using the device

Operating the device manually

You can operate the shutter by manually using the blind control switch.

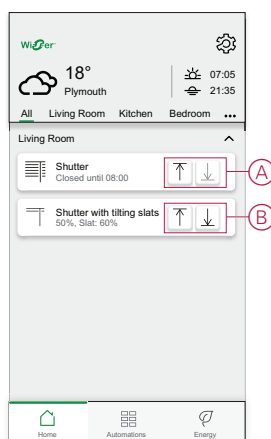
- Long press the blind control switch ($> 0,5$ s) to move the blind up or down (A).
 - Press (\wedge) to open the blind.
 - Press (\vee) to close the blind.
- **Shutter:** Short press ($< 0,5$ s) to stop the moving blind (B).
- **Shutter with tilting slats:** Short press ($< 0,5$ s) to adjust the slat position (C).



Opening/Closing the shutter using app

To open/close the shutter:



1. Go to the Home page, tap **All** and find the device.
2. Tap \uparrow \downarrow (A) or (B) to open/close the shutter or shutter slat.

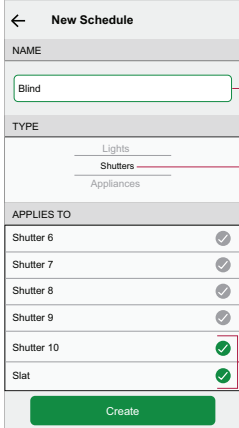


Setting up a schedule

The shutter can be controlled and triggered by a schedule. Once the schedule is set, your system will follow the active schedule. You can create or modify the schedules at any time. The devices can be fully controlled by schedule. Once the schedule is set, the devices operates at a given time.

To create a schedule:

1. On the **Home** page, tap  > **Schedules** > .
2. Enter a name of the schedule (A).
3. Select a device type (B).
4. Select the list of devices (C) to which the schedule must apply.
5. Tap **Create**.



← New Schedule

NAME

Blind


TYPE

Lights
Shutters
Appliances

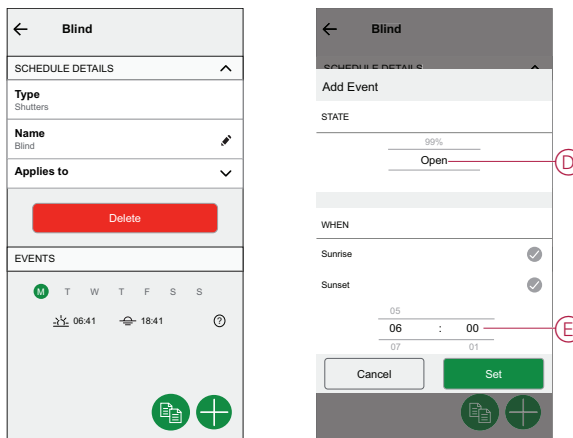
APPLIES TO

Shutter 6	<input type="checkbox"/>
Shutter 7	<input type="checkbox"/>
Shutter 8	<input type="checkbox"/>
Shutter 9	<input type="checkbox"/>
Shutter 10	<input checked="" type="checkbox"/>
Slat	<input checked="" type="checkbox"/>



Create

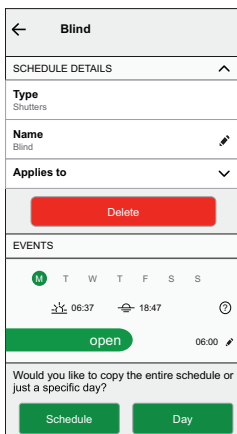
6. Tap  to add an event.

7. Select a state (Open/Closed/percentage) (D), time period (E) and tap **Set**.



TIP:

- You can add multiple schedules based on your requirement. Select days, tap , set on/off state and time.
- You can copy the existing schedule to another schedule or to the days of your choice. Tap  .
 - Tap **Schedule** and select an existing schedule and tap **Copy**.
 - Tap **Day** and select the days you want to assign and tap **Copy**.






Moments

Moment allows you to group multiple actions that are usually performed together. By using the Wisier Home app, you can create moments based on your needs.

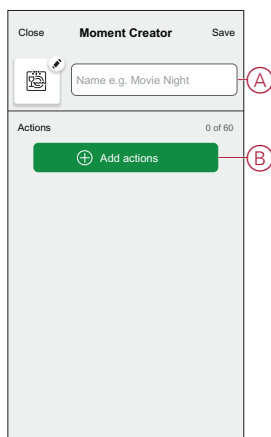
Creating a moment

Moment allows you to group multiple actions that are usually performed together. By using the Wisier Home app, you can create moments based on your needs. To create a moment:

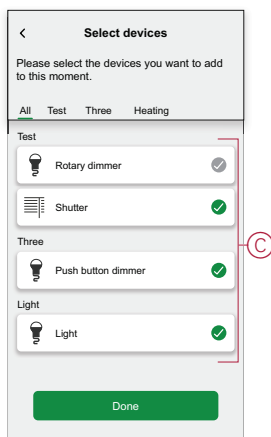
1. On the **Home** page, tap .
2. Go to **Moments** and then tap  to create a moment.
3. Enter the name of the moment (A).

TIP: You can choose the cover image that represents your moment by tapping .

4. Tap **Add actions** (B) to select the list of devices.



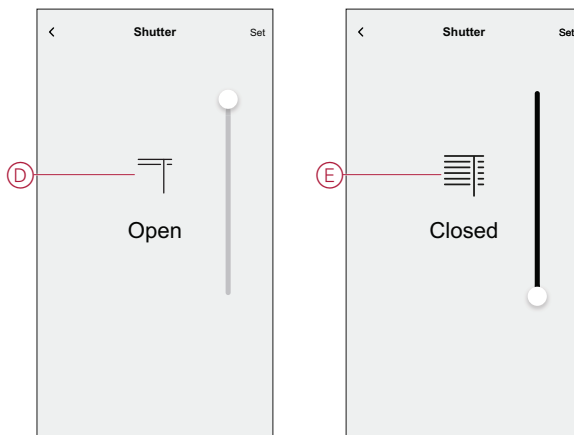
5. Select the devices (C) you want to set an action and tap **Done**.



6. On the **Moment creator** page, select any one of the following device and set actions.

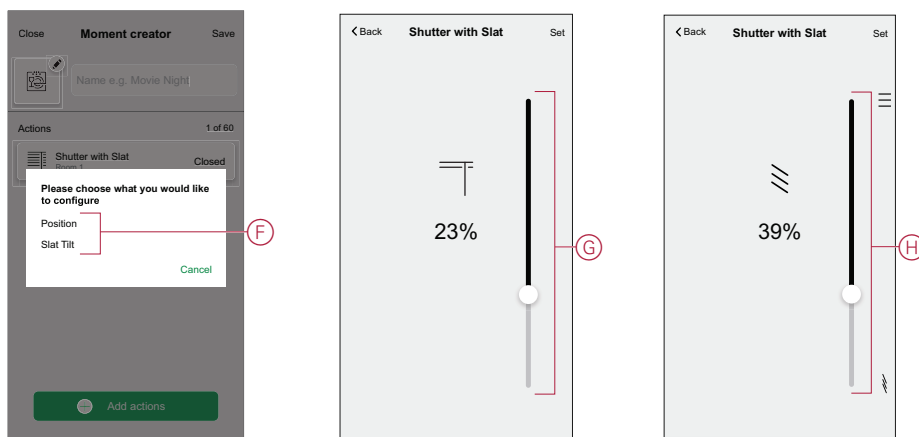
– **For shutter:**

- Drag the sliding bar up/down to open/close the shutter completely (D, E).
- Drag the sliding bar to keep the shutter in the preferred position.



– **For Shutter slat:**

- Select **Position** (F) and drag the sliding bar up/down to open/close the shutter (G).
- Select **Slat Tilt** (F) and drag the sliding bar up/down to adjust the tilt position of the shutter (H).





7. Tap **Set**.

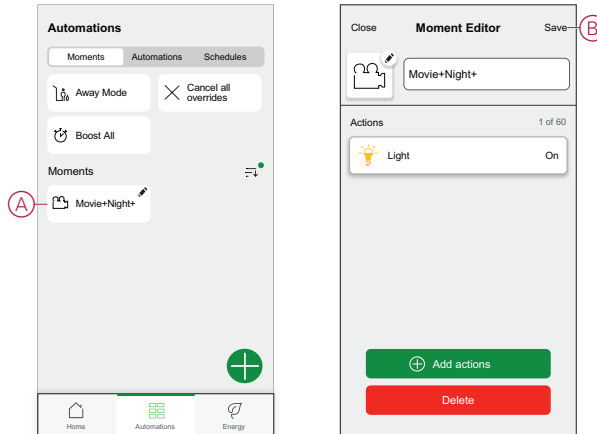
8. Once all conditions are set, tap **Save**.

Once the moment is saved, it is visible on the **Moments** tab. You can tap on the moment to enable it.

Editing a moment



To edit a moment:

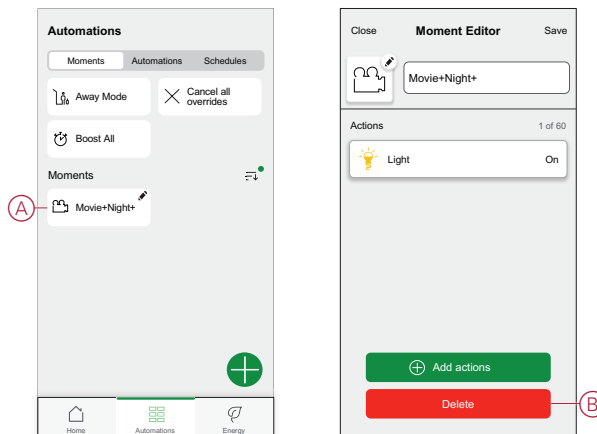
1. On the **Home** page, tap .
2. Go to **Moments**, locate the moment you want to edit and tap  (A).
3. On the **Moment Editor** page, you can tap each item to change the settings and tap **Save** (B).



Deleting a moment

To delete a moment:

1. On the **Home** page, tap .
2. Go to **Moments**, locate the moment you want to delete and tap  (A).
3. On the **Moment Editor** page, tap **Delete** (B) and tap **Ok**.






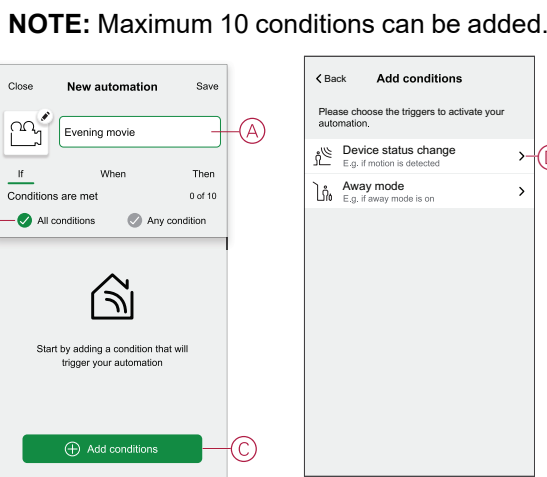
Automation

An automation allows you to trigger an action automatically or at scheduled times. By using the Wisier Home app, you can create automations based on your needs. This example demonstrates how a device works when the condition is met.

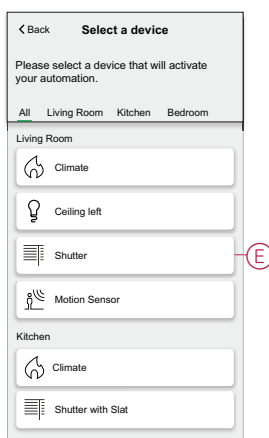
Creating an automation

Follow the steps to create an automation:

1. On the **Home** page, tap .
2. Tap **Automation** >  to create an automation.
3. Tap  and choose an icon that best represents your automation.
4. Enter a name of the automation (A) and select any of the following conditions to meet (B).
 - **All conditions:** All conditions must be met to trigger an automation
 - **Any condition:** Any one of the condition must be met to trigger an automation.
5. Tap **Add conditions** (C) and select any of the following (D):
 - **Device status change** (Select the device)
 - **Away Mode** (Enable or Disable)

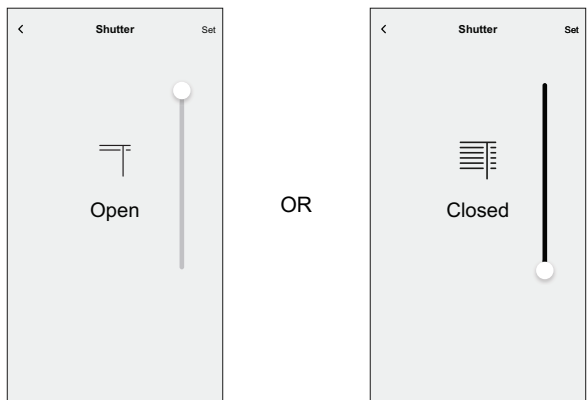


6. Select a device (E) that will set the condition.




7. Drag the sliding bar up/down to open/close the shutter or adjust the position as per need. Example shutter in Open or Closed state.

NOTE: If **Shutter with slat** is selected, set the shutter as well as the slat tilt position.



8. Tap **Set**.

NOTE: To remove an added condition, swipe left and tap . Then add a new condition with the required parameters.

9. To add an action, tap **Then > Add an action** and select any of the following (F):

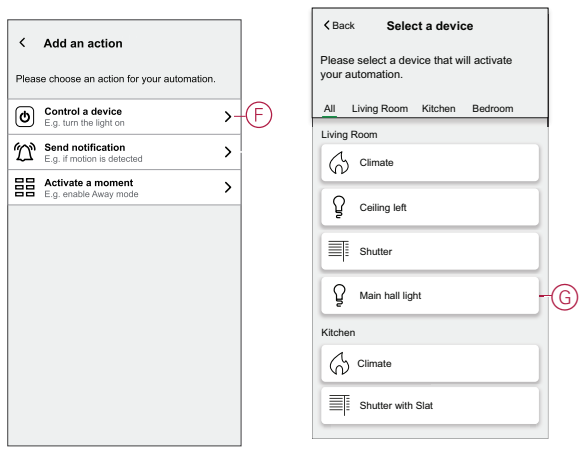
- **Control a device:** Select a device that you want to trigger.
- **Send notification:** Turn on the notification for the automation.
- **Activate a moment:** Select the moment that you want to trigger.

NOTE:

- Maximum 10 actions can be added.
- You can add one action in an automation; to add another action, you must create another automation.

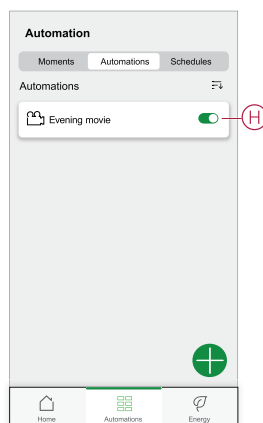
10. Select **Main hall light (G)** device and set an action on/off.

11. Tap **Set**.




12. Tap **Save**.

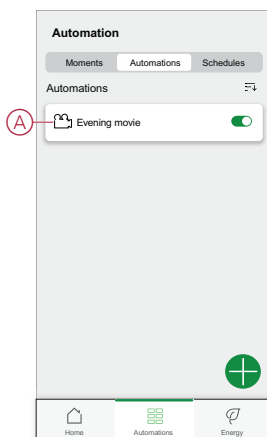
The saved Automation is displayed on the **Automation** page. Tap the toggle switch (H) to enable/disable the Automation.



Editing an automation

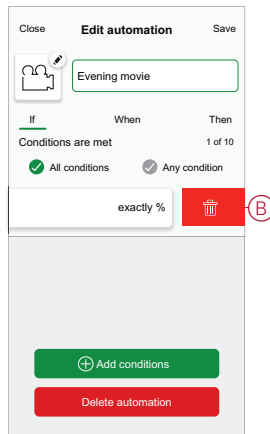
Follow the steps to edit an automation:

1. On the **Home** page, tap .
2. Go to **Automation**, tap the automation you want to edit (A).



3. On the **Edit automation** page, you can:
 - Change the icon.
 - Rename the automation.
 - Change the condition or action.


- Remove the Condition or Action by swiping it to the left and tapping the **bin** icon (B).

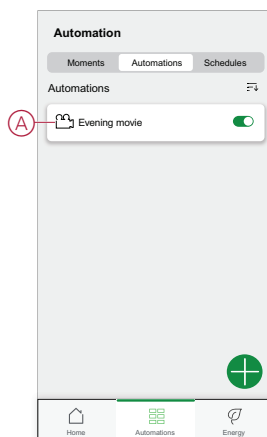


- Add a new condition or action and then tap **Save**.

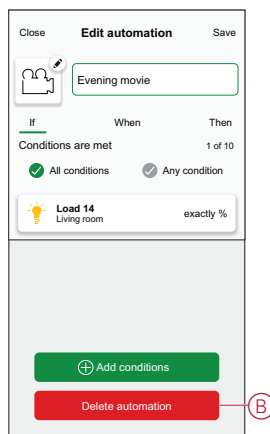
Deleting an automation

Follow the steps to delete an automation:

- On the **Home** page, tap .
- Go to **Automation**, tap the automation you want to delete (A).





- On the Edit automation page, tap **Delete Automation** (B) and tap **Ok**.





LED Indication


Pairing

User Action	LED Indication	Status
Press the push button 3 times	LED blinks amber per second. 	Pairing mode is active for 30 seconds. When pairing is completed, LED glows green for some time before turning Off. 


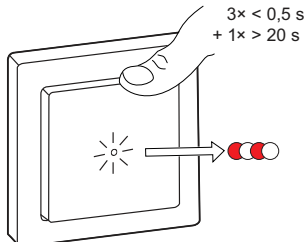
Resetting

User Action	LED Indication	Status
Press the push button 3 times and hold it down once for > 10 s.	After 10 s, the LED blinks red. 	The device is in reset mode. It is reset to the factory settings after 10 seconds. The device then restarts and the LED blinks green for a few seconds and then stays amber. 

Identifying the device

LED Indication	Status
The LED blinks red. 	The shutter opens/closes gradually, upon successful identification of the Blind control switch.

Different connectivity mode

LED Indication	Status
The LED blinks green and red while pairing. 	The device is trying to connect to other connectivity mode. Short press the push button 3 times and then hold for 20 seconds. When the LED blinks red rapidly, release the push button. 

Troubleshooting

Symptom	Solution
Connected shutter cannot be controlled.	<ul style="list-style-type: none"> • Check power supply. • Remove power to the blind control switch and then re-connect power again. • Check the load. • In the case of an external push button, check the wiring. • Re-couple devices.
Shutter is not driving to the desired position.	Reset to factory default settings, refer to Resetting the device , page 19
Shutter is not moving in set time.	Calibrate again.

Technical Data

Nominal voltage	AC 230 V, 50 Hz		
Nominal power	Load type	Load name	Load value
	Ⓜ	Motor	500 W
Standby	Maximum 0.4 W		
Connecting Terminals	Screw terminals for max. 2 x 2.5 mm ² , 0.5 Nm		
Extension unit	Mechanical Double push-buttons, unlimited number, max. 50 m		
Fuse protection	10 A circuit breaker		
Nominal current	4 A, $\cos\phi = 0.6$		
Operating frequency	2405 - 2480 MHz		
Max. radio-frequency power transmitted	< 10 mW		
Communication protocol	Zigbee 3.0 certified		

Compliance

Compliance information for Green Premium products

Find and download comprehensive information about Green Premium products, including RoHS compliance and REACH declarations as well as Product Environmental Profile (PEP) and End-of-Life instructions (EOLI).

<https://checkaproduct.se.com/>



General information about Green Premium products

Click the link below to read about Schneider Electric's Green Premium product strategy.

<https://www.schneider-electric.com/en/work/support/green-premium/>



Trademarks

This guide makes reference to system and brand names that are trademarks of their relevant owners.

- Zigbee® is a registered trademark of the Connectivity Standards Alliance.
- Apple® and App Store® are brand names or registered trademarks of Apple Inc.
- Google Play™ Store and Android™ are brand names or registered trademarks of Google Inc.
- Wi-Fi® is a registered trademark of Wi-Fi Alliance®.
- Wiser™ is a trademark and the property of Schneider Electric, its subsidiaries and affiliated companies.

Other brands and registered trademarks are the property of their respective owners.

Printed in:
Schneider Electric
35 rue Joseph Monier
92500 Rueil Malmaison - France
+ 33 (0) 1 41 29 70 00

Schneider Electric
35 rue Joseph Monier
92500 Rueil Malmaison
France

+ 33 (0) 1 41 29 70 00

www.se.com

As standards, specifications, and design change from time to time,
please ask for confirmation of the information given in this publication.

© 2023 – Schneider Electric. All rights reserved.

DUG_Ovalis Shutter_WH-03