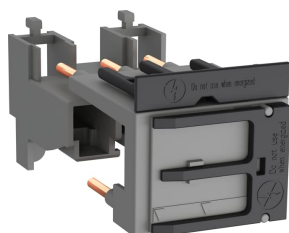


PRODUCT-DETAILS

BEA38-4KF

BEA38-4KF Connecting Link with Manual Motor Starter



Informations générales

| | |
|------------------------------|--|
| Extension du type de produit | BEA38-4KF |
| Code de produit | 1SBN082325T2000 |
| EAN | 3471523019041 |
| Description courte | BEA38-4KF Connecting Link with Manual Motor Starter |
| Description longue | <p>BEA38-4KF is an insulated 3-pole connecting link used to connect AF26..K ... AF38..K or AFC26..K ... AFC38..K contactors with the MS132-K manual motor starters. The BEA38-4KF ensures the electrical and mechanical connection between the contactor or reversing contactors and the associated manual motor starter. Black fork pieces help for a quick dismounting of the DOL starter.</p> <p>With the Push-in Spring terminals, one push is all you need for a faster than ever installation, an easier than ever wiring and a reliable as ever connection.</p> |

Commande

| | |
|-------------------|----------------------------------|
| Quantité minimum | 10 pièce |
| Code douanier | 85389099 |
| Groupe de produit | Accessories for Block Contactors |

Downloads Préférés

| | |
|-------------------------|-----------------|
| Instructions et manuels | 1SBC101065M6801 |
|-------------------------|-----------------|

| | |
|-------------------------|-----------------|
| CAD Dimensional Drawing | 2CDC001079B0201 |
|-------------------------|-----------------|

Dimensions

| | |
|----------------------|---------|
| Produit Largeur Net | 45 mm |
| Produit Longueur Net | 90 mm |
| Produit Hauteur Net | 33.5 mm |
| Poids net | 0.06 kg |

Technique

| | |
|------------------------|---|
| Fréquence assignée (f) | Circuit principal 50 / 60 Hz |
| Tension | Circuit principal 690 V AC |
| Normes et standards | UL 60947-4-1, CSA C22.2 No. 60947-4-1 |
| Adapté pour | MS132 AF26 AF26Z AF30 AF30Z AF38 AF38Z AFC26 AFC30 AFC38 |
| Type de borne | Push-in Spring Terminals |

Environnement

| | |
|---|--|
| Conflict Minerals Reporting Template (CMRT) | 9AKK108467A5658 |
| REACH Declaration | 2CMT2021-006202 |
| Informations RoHS | 2CMT2021-006277 |
| Statut RoHS | Following EU Directive 2011/65/EU |
| WEEE B2C / B2B | Business To Business |
| Catégorie DEEE | 5. Small Equipment (No External Dimension More Than 50 cm) |

Certificats et Déclarations (Numéro de document)

| | |
|----------------------------------|--|
| Déclaration de Conformité - CE | 1SBD250021U1000 |
| Declaration of Conformity - UKCA | 1SBD250043U1000 |
| Certificat GOST | GOST_POCCFR.ME77.B07175.pdf |
| Certificat UL | UL-US-L312527-151-12119002-5 UL-CA-L312527-451-12119002-5 |

Emballage

| | |
|--------------------|--------------|
| Emballage Niveau 1 | box 10 pièce |
|--------------------|--------------|

Unités

| | |
|--------------------------------|---------------|
| Emballage Niveau 1 Largeur | 92 mm |
| Emballage Niveau 1 Longueur | 225 mm |
| Emballage Niveau 1 Hauteur | 80 mm |
| Emballage Niveau 1 Poids | 0.72 kg |
| Emballage Niveau 1 EAN | 3471523019041 |
| Emballage Niveau 3 Unités | 840 pièce |

Classifications

| | |
|--------------------|--|
| eClass | V11.0 : 27371392 |
| E-Number (Finland) | 3709780 |
| ETIM 6 | EC002498 - accessoires pour électriques à basse tension |
| ETIM 7 | EC002498 - Accessories for low-voltage switch technology |
| ETIM 8 | EC002498 - Accessories/spare parts for low-voltage switch technology |
| ETIM 9 | EC002498 - Accessories/spare parts for low-voltage switch technology |
| UNSPSC | 39120000 |

Catégories

Produits basse tension → Produits de Contrôle, Protection et sécurité machines → Contacteurs → Block Contactors Accessories

