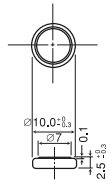


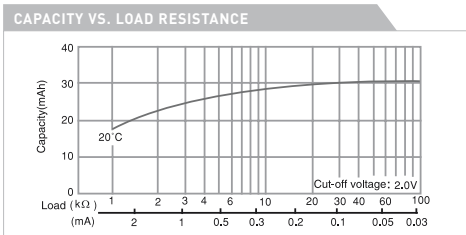
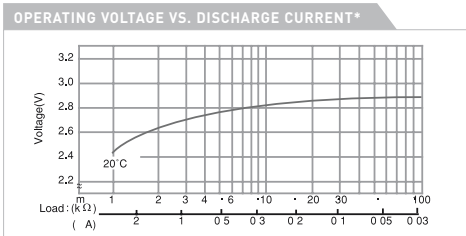
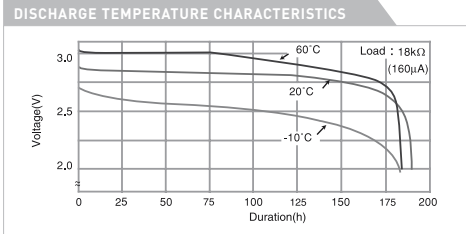
MANGANESE DIOXIDE LITHIUM BATTERIES (CR SERIES)

MANGANESE DIOXIDE LITHIUM BATTERIES (CR SERIES)

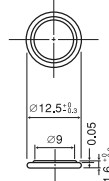
CR-1025



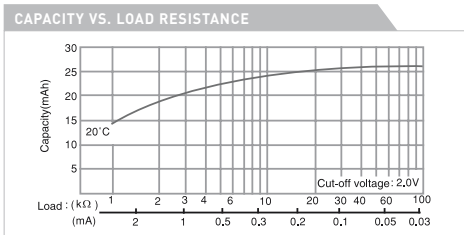
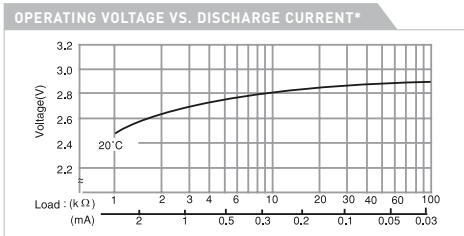
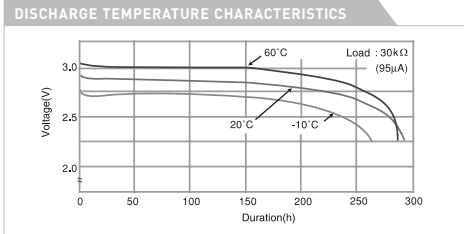
SPECIFICATIONS	
Name	CR-1025
Nominal voltage (V)	3
Nominal capacity (mAh)	30
Continuous drain (mA)	0.1
Operating temperature (°C)	-30 to +60
Weight (g)	0.7



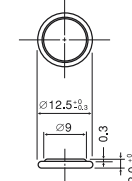
CR-1216



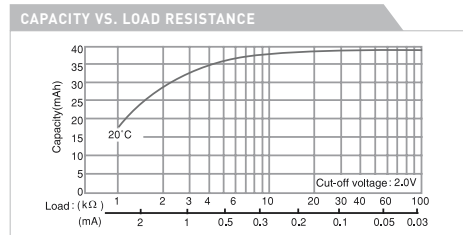
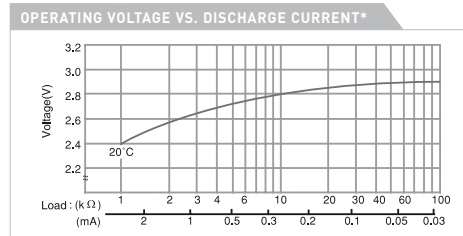
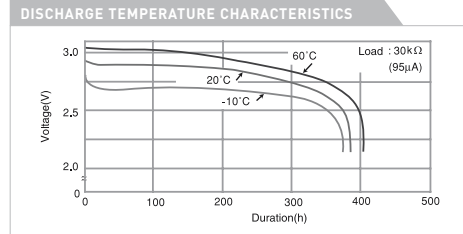
SPECIFICATIONS	
Name	CR-1216
Nominal voltage (V)	3
Nominal capacity (mAh)	25
Continuous drain (mA)	0.1
Operating temperature (°C)	-30 to +60
Weight (g)	0.7



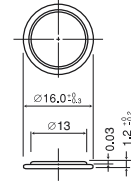
CR-1220



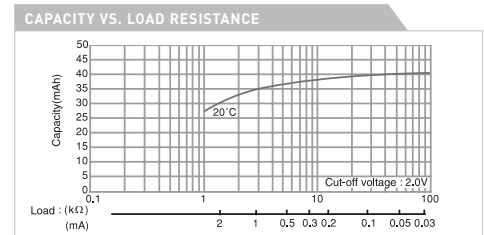
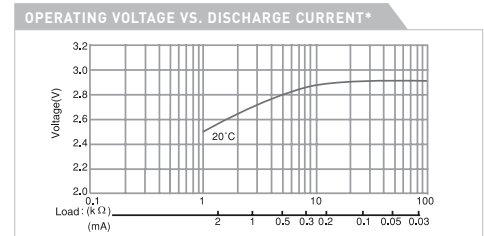
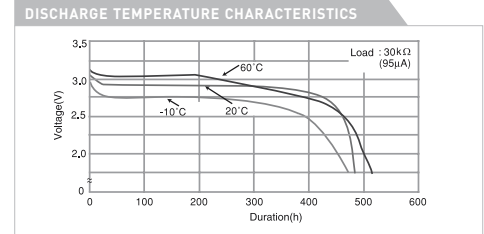
SPECIFICATIONS	
Name	CR-1220
Nominal voltage (V)	3
Nominal capacity (mAh)	35
Continuous drain (mA)	0.1
Operating temperature (°C)	-30 to +60
Weight (g)	1.2



CR-1612



SPECIFICATIONS	
Name	CR-1612
Nominal voltage (V)	3
Nominal capacity (mAh)	40
Continuous drain (mA)	0.1
Operating temperature (°C)	-30 to +60
Weight (g)	0.8



The data in this document are for descriptive purposes only and are not intended to make or imply any guarantee or warranty.

* Voltage at 50% discharge depth.

The data in this document are for descriptive purposes only and are not intended to make or imply any guarantee or warranty.

* Voltage at 50% discharge depth.