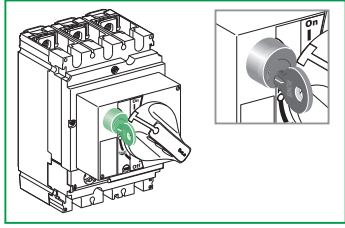


**Compact NSX100-630
FPower NSX / GV7**

Rot handle keylock adapter (w/o keylock)
Verrouillage cde rotative (sans serrure)
Dispositivo de enclavamiento
para mando rot. (no incluye cierr.)



GHD16293AA-06

Schneider Electric Industries SAS

35, rue Joseph Monier
CS 30323
F - 92506 Rueil Malmaison Cedex

www.schneider-electric.com



© 2015 Schneider Electric.
All rights reserved.

PLEASE NOTE

■ Electrical equipment should be installed, operated, serviced, and maintained only by qualified personnel.
■ No responsibility is assumed by Schneider Electric for any consequences arising out of the use of this material.

REMARQUE IMPORTANTE

■ L'installation, l'utilisation, la réparation et la maintenance des équipements électriques doivent être assurées par du personnel qualifié uniquement.
■ Schneider Electric décline toute responsabilité quant aux conséquences de l'utilisation de cet appareil.

TENGA EN CUENTA

■ La instalación, manejo, puesta en servicio y mantenimiento de equipos eléctricos deberán ser realizados sólo por personal cualificado.
■ Schneider Electric no se hace responsable de ninguna de las consecuencias del uso de este material.

请注意

■ 电气设备的安装、操作、维修和维护工作仅限于合格人员执行。
■ Schneider Electric不承担由于使用本资料所引起的任何后果。

LV429344
open position key lock open or close position key lock
or / ou / o

LV432604
open position key lock open or close position key lock
or / ou / o

A **B** or / ou / o

PZ1/PZ2

i **41940** or / ou / o **42888** **16**

Crack!

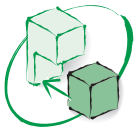
1 or / ou / o

2

3

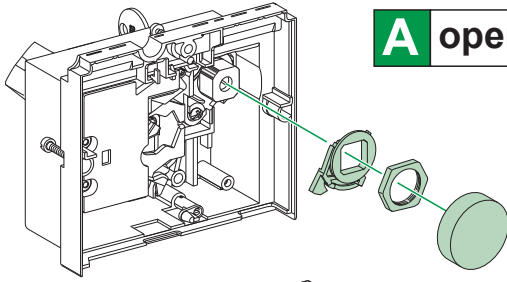
4 **1,2 N.m**
10.5 lb-in

GHD16293AA-06

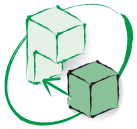
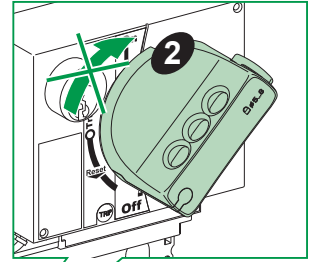
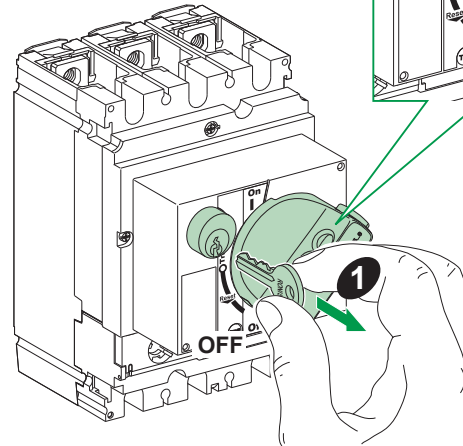
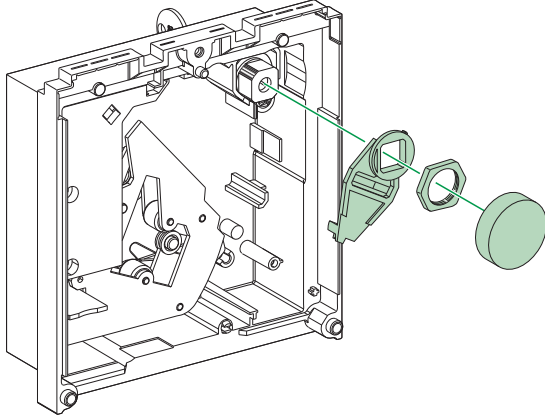


A open position key lock

100-250 A

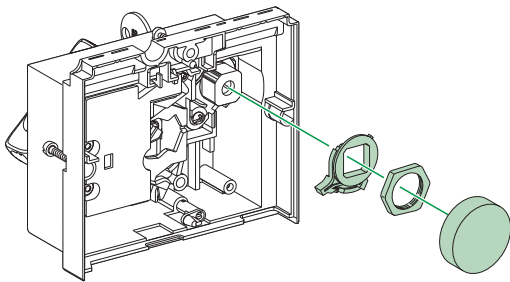


400-630 A



B open or close position key lock

100-250 A



400-630 A

