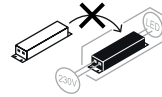
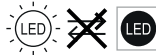


BIM2X5W



The installation must be carried out by a qualified electrician
 L'installation doit être effectuée par un professionnel qualifié

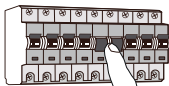
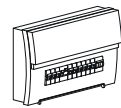
Caractéristiques techniques / Características técnicas / Características técnicas / Caratteristiche tecniche

Modèle-Référence / Modelo-Referencia / Modello-Riferimento / Modelo-Referência	BL05102001	BL05102002
Tension nominale / Tensión nominal / Tensione nominale / Tensão nominal	230VAC 50Hz	
Puissance nominale / Potencia nominal / Potenza nominale / Potência nominal	(5W ERP) 2x5W	
Type-Longueur de câble / Tipo-Longitud del cable / Tipo-Lunghezza del cavo / Tipo-Comprimento do cabo	File à connecter / wire to connect	
Indice de protection / Grado de protección / Indice di protezione / Grau de protecção	IP 65 / IK 06	
Dimensions / Dimensiones / Dimensioni / Dimensões	80x85x85ERP (96x120x100mm)	
Lampes LED / Lámparas LED / Lampade LED / Lâmpadas LED	LED SMD	
Recouvrable / can be cover or not	NO	
Flux lumineux nominal / Flujo luminoso nominal / Flusso luminoso nominale / Fluxo luminoso nominal	2x450lm(2x650lm ERP)	
Durée de vie nominale / Vida útil nominal / Durata di vita nominale / Tempo de vida nominal	≥ 50000 h (L70 @ 25°C)	
Cycles de commutation / Ciclos de conmutación / Cicli di accensione / Ciclos de comutação		
Température de couleur / Temperatura de color / Temperatura di colore / Temperatura de cor	3000K	
Indice de rendu des couleurs / Índice de rendimiento de color / Índice di resa del colore / Índice de restituição das cores	≥ 80 Ra	
Angle de faisceau nominal / Ángulo del haz luminoso nominal / Angolo del fascio nominale / Ângulo nominal do feixe	90° (ERP CONE 120°)	
Facteur de puissance / Factor de potencia / Fattore di potenza / Fator de potência	> 0.9	

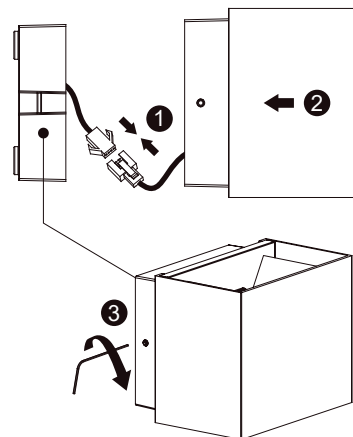
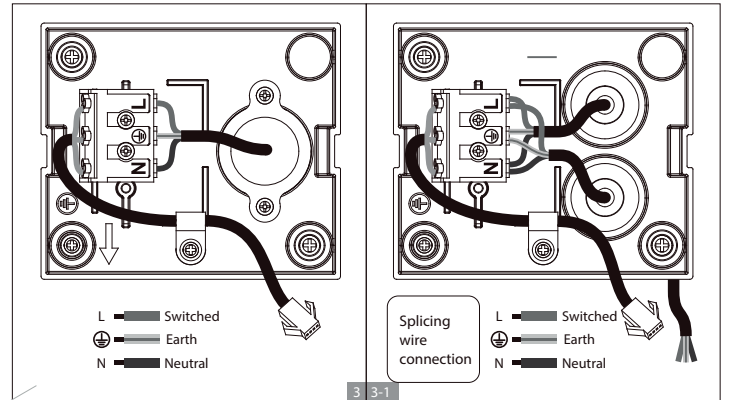
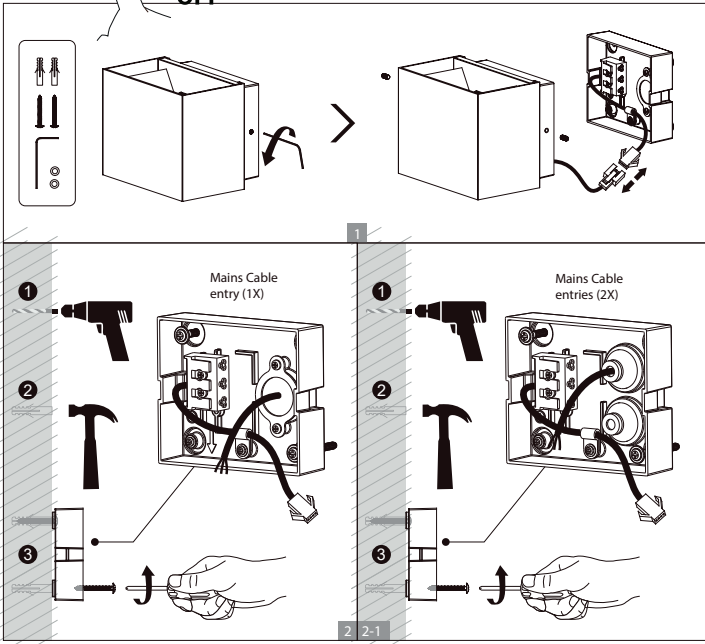
WARNING



L'installation doit être réalisée par un professionnel qualifié
 Veuillez couper l'alimentation générale afin d'éviter les risques d'électrocutions
 Veuillez vous assurer de la bonne tension du réseau
 Please make sure to turn the power off before installation
 Terminal block not included, installation and maintenance must be performed by qualified person
 Please make sure the lamp is working with the correct input voltage



OFF



BL05102001



BL05102002

