

Fiberglass distribution boards FHS



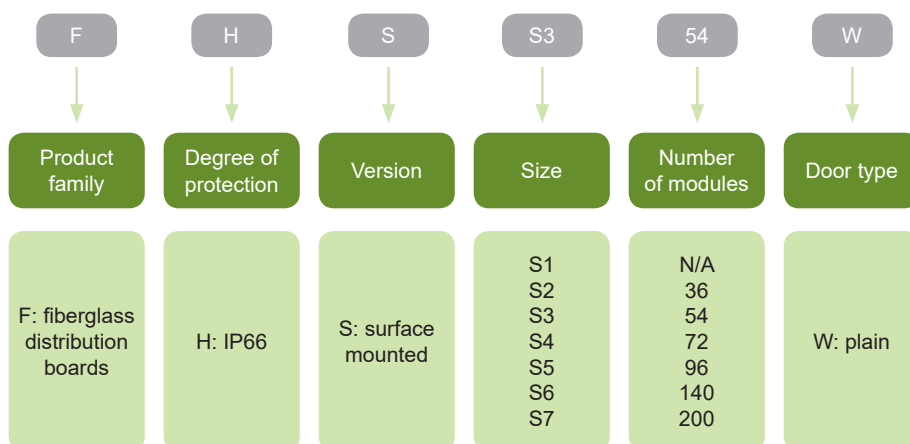
- Fiberglass (thermosetting GRP) distribution boards FHS
- In conformity to EN 62208 standard
- Variants for surface mounting
- High degree of protection rating IP66
- Resistance to impacts IK10
- Light grey RAL 7035 colour
- Design offers extra space inside
- Robust steel internal mounting frame for modular devices with clipping system for easy mounting and setting to the board

Fiberglass (thermosetting GRP) distribution boards FHS are a range of products for heavy duty uses with IP66 protection class and resistant to UV rays. They are suitable for example for PV plants, cement plants, mineral oil extraction plants, nuclear plants and laboratories, commercial and exhibition activities, airports, railway and underground facilities.

The system is composed of 7 sizes in the versions with blind door which allows an opening wider than 180°. Thanks to the clipping system of internal mounting frame for modular devices wiring can be done on the bench, out of the board or directly inside the board.

The accessories to use the board in typical configurations of automation are the backplates, inner door, functional frame, front panels with DIN rails and others.

Type Key



Certification marks



Fiberglass distribution boards FHS

Overview table of Fiberglass distribution boards FHS

FHS	Size	S1	S2	S3	S4	S5	S6	S7
		260x305x160mm	340x430x180mm	450x505x220mm	450x655x220mm	560x655x260mm	630x810x300mm	850x1060x350mm
	Modules	-	36 (3x12)	54 (3x18)	72 (4x18)	96 (4x24)	140 (5x28)	200 (5x40)
Article No.		107192 FHS-S1 W	107193 FHS-S2 36W	107194 FHS-S3 54W	107195 FHS-S4 72W	107196 FHS-S5 96W	107197 FHS-S6 140W	107198 FHS-S7 200W

Automation

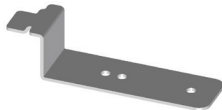
Metal back plates	107211 MBP FHS S1	107212 MBP FHS S2	107213 MBP FHS S3	107214 MBP FHS S4	107215 MBP FHS S5	107216 MBP FHS S6	107217 MBP FHS S7
Fiberglass back plates	107218 IBP FHS S1	107219 IBP FHS S2	107220 IBP FHS S3	107221 IBP FHS S4	107222 IBP FHS S5	107223 IBP FHS S6	-
Spacer kits	-	107256 SK FHS S2	107257 SK FHS S3-4		107258 SK FHS S5	107259 SK FHS S6	107260 SK FHS S7
Fiberglass inner doors	-	107249 TID FHS S2	107250 TID FHS S3	107251 TID FHS S4	107252 TID FHS S5	107253 TID FHS S6	107254 TID FHS S7

Distribution

Functional frames	-	107206 MF FHS S2	107207 MF FHS S3	107208 MF FHS S4-5		107209 MF FHS S6	107210 MF FHS S7
DIN rails with windowed front panels	-	107224 PW FHS S2	107225 MF FHS S3-4		107226 MF FHS S5	107227 MF FHS S6	107228 MF FHS S7
Metal back plate - partial	-	107239 MSB FHS S2	107240 MSB FHS S3-4		107241 MSB FHS S5	107242 MSB FHS S6	107243 MSB FHS S7
Front blind panels - single height	-	107229 BP FHS S2	107230 BP FHS S3-4		107231 BP FHS S5	107232 BP FHS S6	107233 BP FHS S7
Front blind panels - double height	-	107234 DBP FHS S2	107235 DBP FHS S3-4		107236 DBP FHS S5	107237 DBP FHS S6	107238 DBP FHS S7



Fiberglass distribution boards FHS



Overview table of Fiberglass distribution boards FHS

FHS	Size	S1	S2	S3	S4	S5	S6	S7
		260x305x160mm	340x430x180mm	450x505x220mm	450x655x220mm	560x655x260mm	630x810x300mm	850x1060x350mm
	Modules	-	36 (3x12)	54 (3x18)	72 (4x18)	96 (4x24)	140 (5x28)	200 (5x40)
Article No.		107192 FHS-S1 W	107193 FHS-S2 36W	107194 FHS-S3 54W	107195 FHS-S4 72W	107196 FHS-S5 96W	107197 FHS-S6 140W	107198 FHS-S7 200W

Other accessories

Mounting brackets	107244 (zincod), GB FHS 107245 (stainless steel) SB FHS							
Accessories for pole mounting	107246 PM FHS S1-2	107247 PM FHS S3-4-5				-		
Cable trunking support	107261 CTS FHS							
Handle with security lock	107248 HSL FHS							
Documentation pocket	107255 (A5), PDP FHS A5 106831 (A4) MF PDP A4							
Drilling tool	108094 DT FHS							

Fiberglass distribution boards FHS

Fiberglass distribution boards FHS with plain door

- Surface mounted fiberglass (GRP) distribution boards
- Up to 5 rows, maximum capacity up to 200 units of modular devices
- Plain door
- Scope of delivery: empty distribution board with plain door, key with triangular insert, screwcaps for double insulation



Size	External dimensions	Modules	Article No.	Type	Packing
S1	260x305x160 mm	-	107192	FHS-S1 W	1
S2	340x430x180 mm	36 (3x12)	107193	FHS-S2 36W	1
S3	450x505x220 mm	54 (3x18)	107194	FHS-S3 54W	1
S4	450x655x220 mm	72 (4x18)	107195	FHS-S4 72W	1
S5	560x655x260 mm	96 (4x24)	107196	FHS-S5 96W	1
S6	630x810x300 mm	140 (5x28)	107197	FHS-S6 140W	1
S7	850x1060x350 mm	200 (5x40)	107198	FHS-S7 200W	1

Functional frames

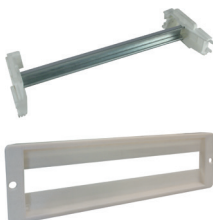
- Steel material functional mounting frames
- For installation of front panels and DIN rails
- Allows setting of the DIN rails at different heights
- Scope of delivery: 2 functional frame parts with holders for mounting



Suitable size	Number of rows	Article No.	Type	Packing
S2	3	107206	MF FHS S2	1 set
S3	3	107207	MF FHS S3	1 set
S4/S5	4	107208	MF FHS S4-5	1 set
S6	5	107209	MF FHS S6	1 set
S7	5	107210	MF FHS S7	1 set

DIN rails with windowed front panels

- DIN rail with windowed front plates for modular devices (45 mm)
- Scope of delivery: holders, DIN rail, front panel, quick fixing ¼ turn screw inserts




Suitable size	Panel height	For total modules	Article No.	Type	Packing
S2	125 mm	12	107224	PW FHS S2	1 set
S3, S4	150 mm	18	107225	PW FHS S3-4	1 set
S5	150 mm	24	107226	PW FHS S5	1 set
S6	150 mm	28	107227	PW FHS S6	1 set
S7	200 mm	40	107228	PW FHS S7	1 set

Fiberglass distribution boards FHS

Front blind panels - single height


- Single height blind panels
- Scope of delivery: blind front panel, quick fixing ¼ turn screw inserts



Suitable size	Panel height	Article No.	Type	Packing
S2	125 mm	107229	BP FHS S2	1/6
S3, S4	150 mm	107230	BP FHS S3-4	1/6
S5	150 mm	107231	BP FHS S5	1/4
S6	150 mm	107232	BP FHS S6	1/4
S7	200 mm	107233	BP FHS S7	1/1

Front blind panels - double height


- Double height blind panels
- Scope of delivery: blind front panel, quick fixing ¼ turn screw inserts



Suitable size	Panel height	Article No.	Type	Packing
S2	250 mm	107234	DBP FHS S2	4
S3, S4	300 mm	107235	DBP FHS S3-4	4
S5	300 mm	107236	DBP FHS S5	1
S6	300 mm	107237	DBP FHS S6	1
S7	400 mm	107238	DBP FHS S7	1

Fiberglass inner doors


- Reversible fiberglass (GRP) inner door
- Scope of delivery: fiberglass inner door, fixing material



Suitable size	Dimensions	Article No.	Type	Packing
S2	280x375 mm	107249	TID FHS S2	1/4
S3	388x450 mm	107250	TID FHS S3	1/4
S4	388x600 mm	107251	TID FHS S4	1/4
S5	496x600 mm	107252	TID FHS S5	1/1
S6	568x750 mm	107253	TID FHS S6	1/1
S7	784x1000 mm	107254	TID FHS S7	1/1

Metal back plates - partial

- Partial metal back plates with adjustable depth
- Scope of delivery: holders, metal back plates with screws for mounting



Suitable size	Plate height	Article No.	Type	Packing
S2	125 mm	107239	MSB FHS S2	1 set
S3, S4	150 mm	107240	MSB FHS S3-4	1 set
S5	150 mm	107241	MSB FHS S5	1 set
S6	150 mm	107242	MSB FHS S6	1 set
S7	200 mm	107243	MSB FHS S7	1 set

Fiberglass distribution boards FHS

Metal back plates

- Metal back plates for mounting of various type of devices
- Scope of delivery: steel back plate with screws for mounting



Suitable size	Dimensions	Article No.	Type	Packing
S1	180x240 mm	107211	MBP FHS S1	1/5
S2	260x370 mm	107212	MBP FHS S2	1/5
S3	370x445 mm	107213	MBP FHS S3	1/5
S4	370x595 mm	107214	MBP FHS S4	1/1
S5	475x595 mm	107215	MBP FHS S5	1/1
S6	550x745 mm	107216	MBP FHS S6	1/1
S7	765x995 mm	107217	MBP FHS S7	1/1

Fiberglass back plates

- Fiberglass (GRP) back plates for mounting of various type of devices
- Scope of delivery: fiberglass back plate with screws for mounting



Suitable size	Dimensions	Article No.	Type	Packing
S1	180x240 mm	107218	IBP FHS S1	1/5
S2	260x370 mm	107219	IBP FHS S2	1/5
S3	370x445 mm	107220	IBP FHS S3	1/5
S4	370x595 mm	107221	IBP FHS S4	1/1
S5	475x595 mm	107222	IBP FHS S5	1/1
S6	550x745 mm	107223	IBP FHS S6	1/1

Spacer kits

- Spacer kits for depth adjusting of metal back plates
- Scope of delivery: set of spacer kits



Suitable size	Length	Article No.	Type	Packing
S2	70 mm	107256	SK FHS S2	1 set
S3, S4	110 mm	107257	SK FHS S3-4	1 set
S5	150 mm	107258	SK FHS S5	1 set
S6	190 mm	107259	SK FHS S6	1 set
S7	240 mm	107260	SK FHS S7	1 set

Mounting brackets

- Sets of 4 mounting brackets for wall installation
- Can be mounted horizontally, vertically or hidden, retaining the double insulation
- Scope of delivery: holders, metal back plates with screws for mounting




Suitable size	Brackets material	Article No.	Type	Packing
all	zincd steed	107244	GB FHS	1 set
all	stainless steel	107245	SB FHS	1 set

Fiberglass distribution boards FHS

Accessories for pole mounting

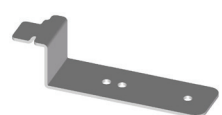
- Pair of accessories for pole mounting
- Predispositions for metal cable tie for mounting on poles with diameter larger than 80 mm
- Scope of delivery: accessories for pole mounting



Suitable size	Material	Article No.	Type	Packing
S1, S2	steel	107246	PM FHS S1-2	1 set
S3, S4, S5	steel	107247	PM FHS S3-4-5	1 set

Cable trunking support


- Brackets for fixing cable trunkings, horizontal and vertical using
- Scope of delivery: 8 cable trunking brackets



Suitable size	Material	Article No.	Type	Packing
all	steel	107261	CTS FHS	1 set

Handle with security lock


- Closing with Yale code key
- Scope of delivery: handle with security lock, 2 keys



Suitable size	Key material	No. of keys	Article No.	Type	Packing
all	steel	2	107248	HSL FHS	1/10

Documentation pocket

- Self-adhesive pocket for documentation
- For A5 or A4 paper size documents



Suitable size	Material	Documents size	Article No.	Type	Packing
all	plastic	A5	107255	PDP FHS A5	1
all	plastic	A4	106831	MF PDP A4	1

Fiberglass distribution boards FHS

Drilling tool

- Tools for metric holes from M20 to M40
- Scope of delivery: M20, M25, M32, M40 and drill



Suitable size	Material	No. of parts	Article No.	Type	Packing
all	tungsten carbide	5	108094	DT FHS	1

Technical Data FHS

Fiberglass distribution boards

General parameters

For heavy duty uses with IP66 protection rating and resistant to UV rays

Suitable for example for PV plants, cement plants, mineral oil extraction plants, nuclear plants and laboratories, commercial and exhibition activities, airports, railway and underground facilities

High resistance to chemical agents

Scope of delivery: empty distribution board with door, key with triangular insert, screwcaps for double insulation

Electrical parameters

Tested according to	EN 62208
Rated operational voltage U_e	1 000 V AC / 1 500 V DC
Rated frequency f	up to 1 000 Hz
Rated impulse voltage U_{imp}	8 kV
Insulation voltage U_i	1000 V AC
Maximum short-circuit current I_{dc}	35 kA
Degree of protection	IP66
Mechanical impact protection	IK10
Insulation class	II
Maximum power dissipation of all installed devices	
FHS-S1	53 W
FHS-S2	90 W
FHS-S3	138 W
FHS-S4	174 W
FHS-S5	217 W
FHS-S6	302 W
FHS-S7	506 W

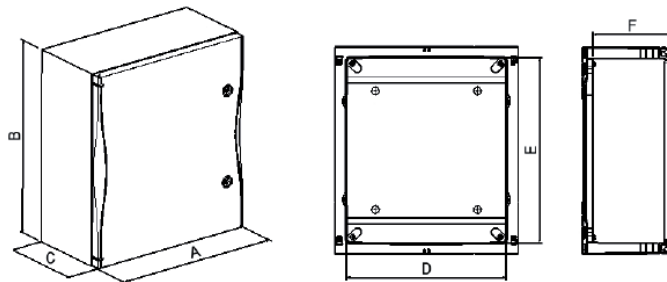
Mechanical parameters

Glow-wire test	960 °C
Used plastics	Fiberglass (thermosetting GRP)
Self-extinguishing grade	V0
Colour	RAL 7035
Ambient temperature	-30 – +100 °C

Technical Data FHS

Fiberglass distribution boards

Dimensional drawings



Dimensions

Type	Dimensions [mm]					
	A	B	C	D	E	F
FHS-S1	260	305	160	200	250	131
FHS-S2	340	430	180	282	376	151
FHS-S3	450	505	220	390	451	191
FHS-S4	450	655	220	390	601	191
FHS-S5	560	655	260	498	601	230
FHS-S6	630	810	300	570	751	269
FHS-S7	850	1060	350	751	1001	319

Clipping system - simple mounting frame setup and installation

