



Small Diameter Button Mounting Kit - (MA018)

The small diameter mounting button provides a solution for cabinets and brackets that require a smaller mounting button than what is provided on the PDU.

INVENTORY:



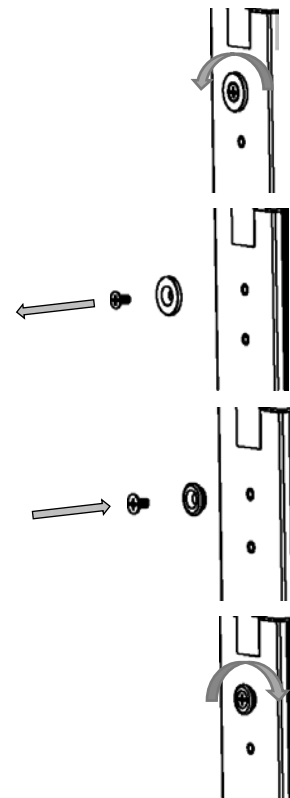
SMALL DIAMETER
BUTTON x 20

M4 SCREW
x 20



INSTALLATION INSTRUCTIONS:

1. Using a #2 Phillips head screwdriver, loosen the M4 screw securing the current mounting button in place.
2. Remove the current M4 screw and mounting button from the PDU.
3. Insert M4 screw through the small diameter mounting button and align with mounting hole in the PDU.
4. Using a #2 Phillips head screw driver, secure the M4 screw and small diameter mounting button to the PDU.
5. Repeat steps 1-4 for each additional mounting button.



The small diameter mounting button is installed and ready for usage. For more information, please contact www.panduit.com