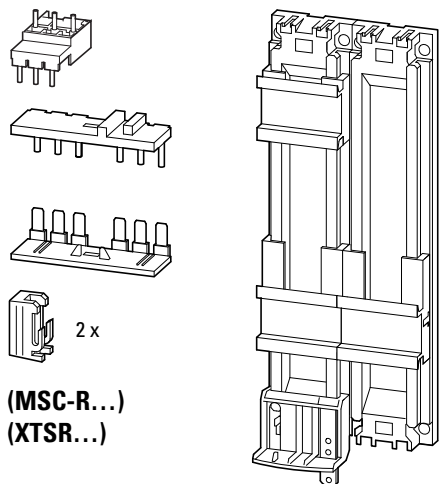


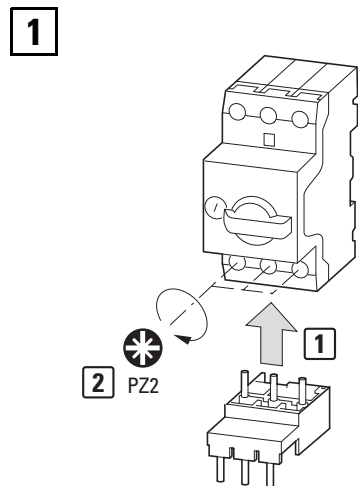
MSC-R..., XTSR..., PKZM0-XRM32, XTPAXTPCRC



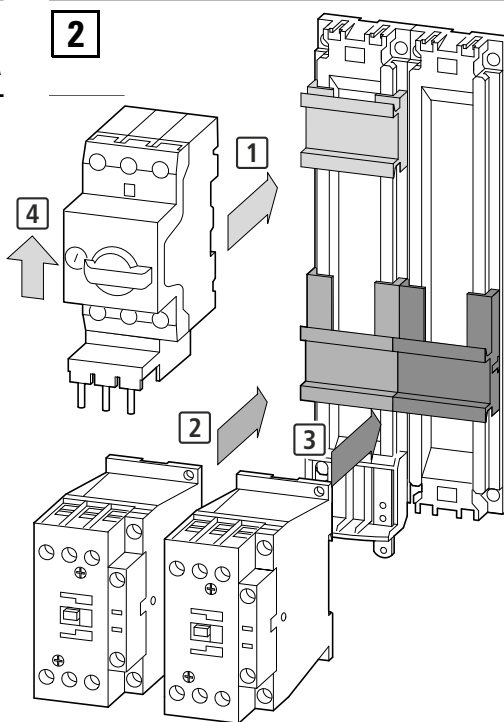
(MSC-R...)
(XTSR...)

! MSC-R... + DILM...-XMV,
 XTSR... + XTCEXML...
 PKZM0-XRM32 + ~~DILM...-XMV~~,
 XTPAXTPCRC + ~~XTCEXML...~~

PKZM0-0.16...PKZM0-32, XTPR...0.16-32A
 or – oder – ou – o – oppure – 或者 – или
 PKE12...PKE32/XTU-1.2...XTU-32, XTPE...1.2-32A



PKE... → IL IL03402019Z



! **en** Electric current! Danger to life!
 Only skilled or instructed persons may carry out the following operations.

(de) **Lebensgefahr durch elektrischen Strom!**
 Nur Elektrofachkräfte und elektrotechnisch unterwiesene Personen dürfen die im Folgenden beschriebenen Arbeiten ausführen.

(fr) **Tension électrique dangereuse !**
 Seules les personnes qualifiées et averties doivent exécuter les travaux ci-après.

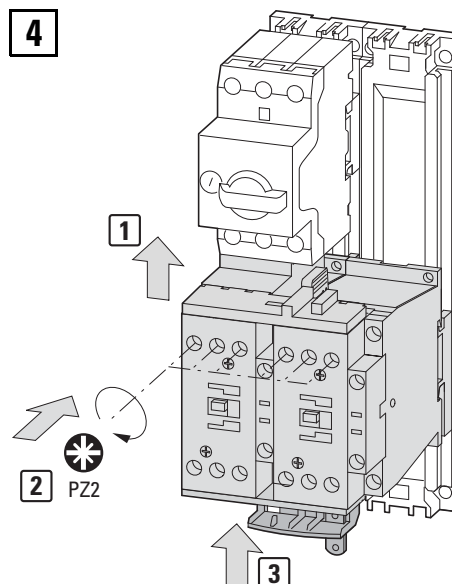
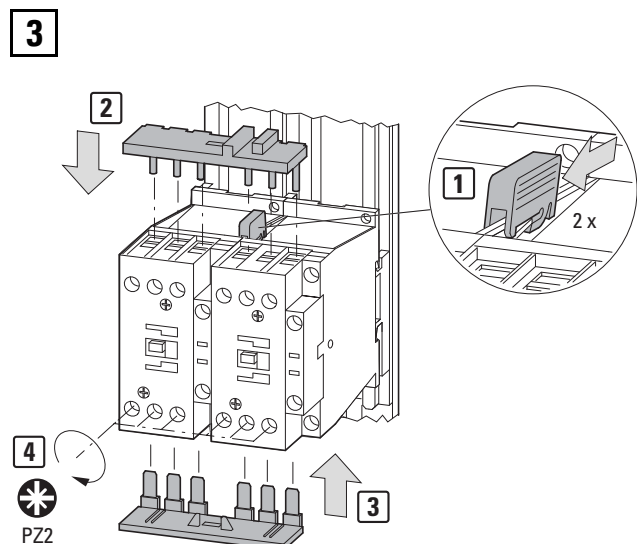
(es) **¡Corriente eléctrica! ¡Peligro de muerte!**
 El trabajo a continuación descrito debe ser realizado por personas cualificadas y advertidas.

(it) **Tensione elettrica: Pericolo di morte!**
 Solo persone abilitate e qualificate possono eseguire le operazioni di seguito riportate.

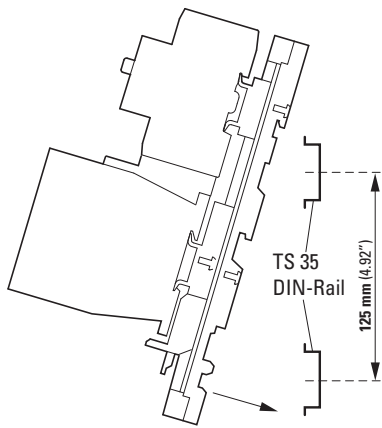
(zh) **触电危险!**
 只允许专业人员和受过专业训练的人员进行下列工作。

(ru) **Электрический ток! Опасно для жизни!**
 Только специалисты или проинструктированные лица могут выполнять следующие операции.

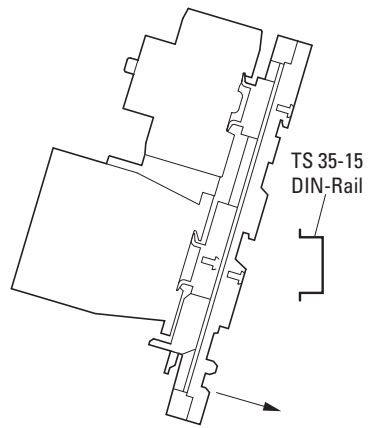
PKZM0, XTPR...	1.7 Nm (15 lb-in)
DILM, XTCE..., 18-32A	3.2 Nm (28 lb-in)



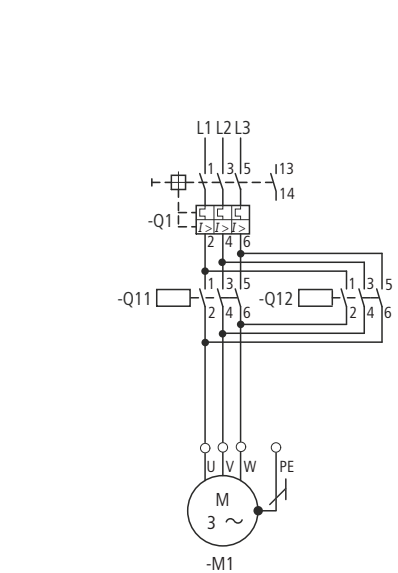
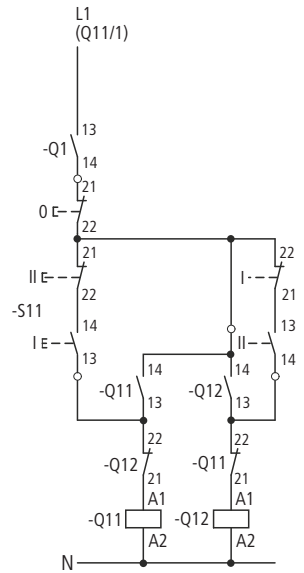
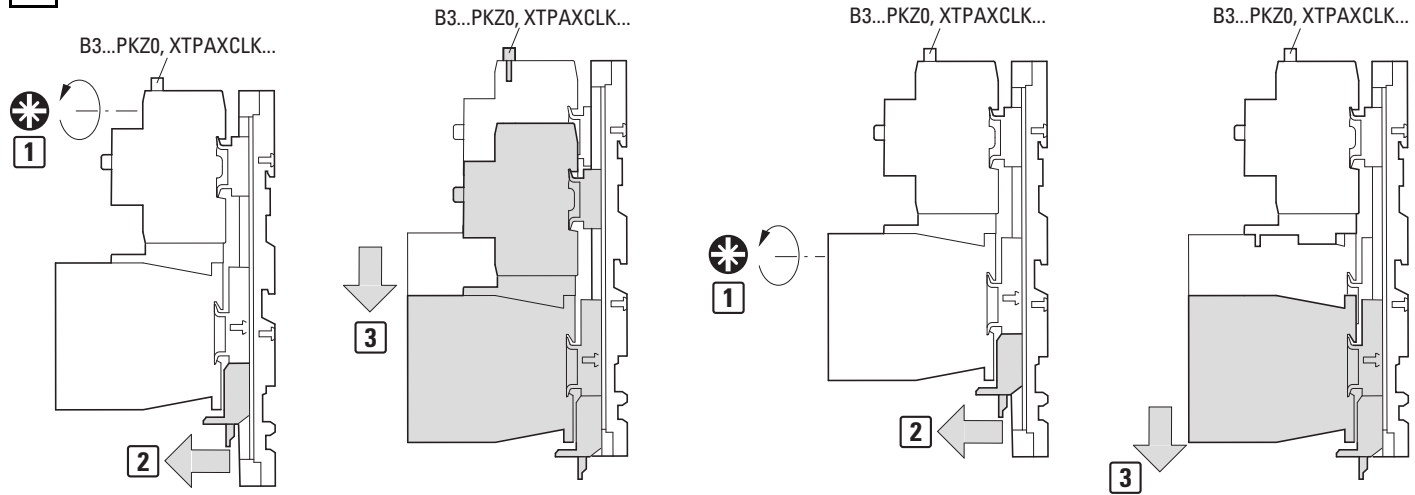
5



- en or
- de oder
- fr ou
- es o
- it oppure
- zh 或者
- ru или



6



- Q11**
- en Mains contactor, clockwise
 - de Netzschütz, Rechtslauf
 - fr Contacteur de ligne, marche à droite
 - es Contactor de red, marcha a la derecha
 - it Contattore di linea, senso di rotazione a destra
 - zh 电源保护继电器, 右旋
 - ru Сетевой контактор, вращение по часовой стрелке
- Q12**
- en Mains contactor, anti-clockwise
 - de Netzschütz, Linkslauf
 - fr Contacteur de ligne, marche à gauche
 - es Contactor de red, marcha a la izquierda
 - it Contattore di linea, senso di rotazione a sinistra
 - zh 电源保护继电器, 左旋
 - ru Сетевой контактор, вращение против часовой стрелки

	Q11	Q12	Q11	Q12	DILM...-XMV XTCEXML...
PKZM0-(0.16...)16 0.16-16A XTPR...	DILM17-01, XTCE018C01... +XTCEXFAC20 ¹⁾ , +DILA-XHI20 ¹⁾	DILM17-01, XTCE018C01... +DILA-XHI20 ¹⁾ , +XTCEXFAC20 ¹⁾			+
PKZM0-(20)25 XTPR020BC1 XTPR025BC1	DILM25-01, XTCE025C01... +XTCEXFAC20 ¹⁾ , +DILA-XHI20 ¹⁾	DILM25-01, XTCE025C01... +DILA-XHI20 ¹⁾ , +XTCEXFAC20 ¹⁾			+
PKZM0-32 XTPR032BC1	DILM32-01, XTCE032C01... +XTCEXFAC20 ¹⁾ , +DILA-XHI20 ¹⁾	DILM32-01, XTCE032C01... +DILA-XHI20 ¹⁾ , +XTCEXFAC20 ¹⁾			+

1) Not included – Nicht im Lieferumfang – Non compris dans la livraison – No incluido en el suministro – Non compreso nella fornitura – 包括在供货范围之中 – Не в комплекте поставки

06/18 IL03402011Z