


10019000	DATA SHEET	
Valid from: 29.08.2022	EPIC® CODING PIN	

Description

- Accessories for an effective use of EPIC® rectangular connectors



Materials / Surfaces

EPIC® CODING PIN

Steel, nitrided

Versions

Article number	Article description
10019000	EPIC® Coding Pin H-BE
10019400	EPIC® Coding Pin STA
10019401	EPIC® Coding Pin Quick & Easy

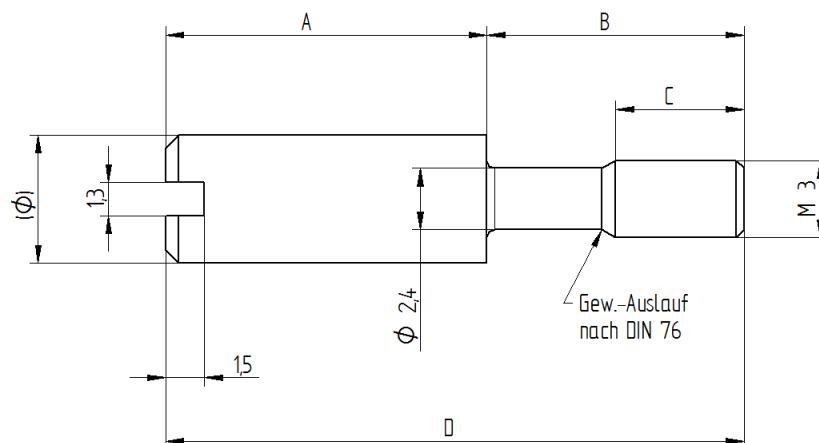
Material and Surface

CODING PIN

Steel


SURFACE COATING

Nitrated



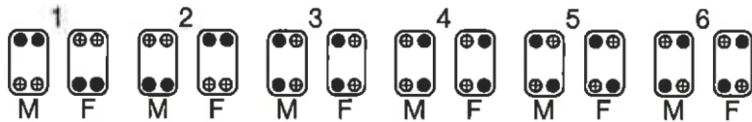
Articel Number	Dimension A [mm]	Dimension B [mm]	Dimension n C [mm]	Dimension D [mm]	Diameter Ø [mm]
10019000	13	10	5	(22,5)	5
10019400	9	13	5	(22)	5
10019401	12	10	5	(22,5)	3,5

Creator: BEGE1/PDP Released: IVSE1/PDP	Document: DB10019000EN Version: 04	Page 1 of 2
---	---------------------------------------	-------------

10019000	DATA SHEET	
Valid from: 29.08.2022	EPIC® CODING PIN	

Coding possibilities

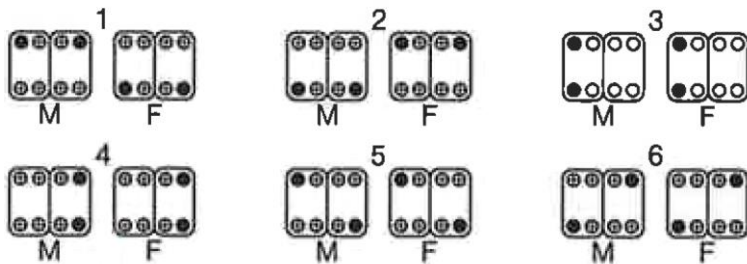
1 Einsatz / 1 insert / 1 insert



Legende:

- Coding Pin
- ⊕ Screw

2 Einsätze / 2 inserts / 2 inserts



Product features

For rectangular connector inserts, the key pin replaces one or more fastening screws. This enables simple coding.

Remark

Photographs are not to scale and do not represent detailed images of the respective products.

Creator: BEGE1/PDP Released: IVSE1/PDP	Document: DB10019000EN Version: 04	Page 2 of 2
---	---------------------------------------	-------------