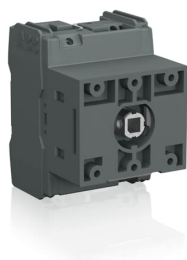


PRODUCT-DETAILS

# OTDC25UT2

## OTDC25UT2 PV Disconnect Switch



### Informations générales

Extension du type de produit	OTDC25UT2
Code de produit	1SCA134388R1001
EAN	6417019631868
Description courte	OTDC25UT2 PV Disconnect Switch
Description longue	OTDC25UT2 PV Disconnect Switch, Terminal bolt kit included, Handle and shaft need to be ordered separately, Door mounting, UL 600 VDC 25 A single circuit, IEC 660 VDC 25 A single circuit, IEC 1000 VDC 16 A single circuit

### Valeur Circulaire

Conflict Minerals Reporting Template (CMRT)	9AKK108467A5658
REACH Declaration	1SCC301240D0201
Informations RoHS	1SCC301239D0201
Toxic Substances Control Act - TSCA	1SCC301321D0201

### Commande

Quantité minimum	1 pièce
Code douanier	85363030
Pays d'origine	Estonia (EE)

## Downloads Préférés

Fiche produit, informations techniques	1SCC301022C0201
Instructions et manuels	1SCC301086M0204
Mechanical Drawings	otdc16-32ut-ust2.igs 1SCC307473F0001 1SCC307474F0001

## Dimensions

Dimensions Cadre du produit	XS
Produit Largeur Net	73.8 mm 2.9 in
Produit Hauteur Net	54.8 mm 2.2 in
Produit Longueur Net	64.1 mm 2.5 in
Poids net	0.2 kg 0.4 lb

## Technique

Rated Operational Current DC-21B ( $I_e$ )	(660 V) 25 A (1000 V) 16 A
Courant thermique conventionnel à l'air libre ( $I_{th}$ )	$\Theta = 40\text{ °C}$ 50 A
Conventional Thermal Current ( $I_{the}$ )	Fully Enclosed 40 A
Tension assignée de tenue aux chocs ( $U_{imp}$ )	8 kV
Tension assignée d'isolement ( $U_i$ )	1000 V
Tension	1000 V
Rated Short-Circuit Making Capacity ( $I_{cm}$ )	(1000 V DC) 1 kA
Courant assigné de courte durée admissible ( $I_{cw}$ )	(1000 V DC) 1 kA for 1 s 1 kA
Rated Conditional Short-Circuit Current ( $I_{nc}$ )	(1000 V DC) 10 kA
Protection Type	UL508i RK5 fuselink max. 70A, IEC60947 gPV fuselink max. 80A
Power Loss	at Rated Operating Conditions per Pole 0.2 W
Degré de pollution	3
Handle Type	Handle and shaft not included

Positive Opening Operation Torque (Direct Opening Action)	0.4 ... 0.8 N·m
Diamètre d'arbre	6 mm 0.24 in
Switches Operating Mechanism	Mechanism on Top of the Switch
Position of Line Terminals	Top In - Bottom Out Bottom In - Top Out
Mode de fonctionnement	Front Operated
Normes et standards	UL508i and IEC 60947-1, -3
Fonctions spéciales	No
Type de montage	Door mounting
Number of Circuits	1
Nombre de pôles	2
Section de câble	2.5 ... 16 mm <sup>2</sup> 12 ... 6 AWG
Indice de protection	Front IP20
Type de borne	Screw Terminals
Couple de serrage	1.2 ... 1.4 N·m 10.6 ... 12.4 lbf·in
Utilization	Photovoltaic
Utilization Category	Switching of resistive loads, including moderate overloads - occasional actuation (DC-21B)

## Technique UL/CSA

Maximum Operating Voltage	600Vdc, UL 508i
Ampere Rating	25A,600Vdc,UL508i
Couple de serrage	1.2 ... 1.4 N·m 10.6 ... 12.4 lbf·in

## Environnement

Statut RoHS	Following EU Directive 2011/65/EU and Amendment 2015/863 July 22, 2019
Toxic Substances Control Act - TSCA	1SCC301321D0201

## Certificats et Déclarations (Numéro de document)

CCC Certificate	CQC2012010302579872
Déclaration de Conformité - CE	1SCC301192D2704
Declaration of Conformity - UKCA	1SCC301313D0201
DNV GL Certificate	1SCC301231D0201
REACH Declaration	1SCC301240D0201
Certificat UL	UL certificate OTDC16-32.pdf

## Emballage

Emballage Niveau 1 Unités	box 1 pièce
Emballage Niveau 1 Largeur	100 mm 3.9 in
Emballage Niveau 1 Longueur	64 mm 2.5 in
Emballage Niveau 1 Hauteur	100 mm 3.9 in
Emballage Niveau 1 Poids	0.2 kg 0.4 lb
Emballage Niveau 1 EAN	6417019631868

## Classifications

Code de classification d'objet	Q
ETIM 7	EC000216 - Switch disconnecter
ETIM 8	EC000216 - Switch disconnecter
ETIM 9	EC000216 - Switch disconnecter (low voltage)
UNSPSC	39122233
Code de catégorie granulaire IDEA (IGCC)	5293 >> Switch disconnecter
eClass	V11.1 : 27371403
Catégorie DEEE	5. Small Equipment (No External Dimension More Than 50 cm)

## Catégories

Produits basse tension → Interrupteurs → DC Switch-Disconnectors

