



Product designation				MINIATURE RELAYS
Product type designation				HR302C
<b>Contact characteristics</b>				
Contact configuration				2 C/O
Rated insulation voltage $U_i$ IEC/EN	V			250
Rated impulse withstand voltage $U_{imp}$	kV			6
IEC Conventional free air thermal current $I_{th}$	A			8
Maximum instantaneous current	A			20
Rated current ( $I_n$ )	A			8
Relay control voltage	V			48VDC
Max contrrollable power in				
	AC-1	W	2000	
	AC-15	VA	150	
Rated operating power AC-1		VA	2000	
Rated operating power AC-15	230 VAC	VA	150	
Single-phase motor control	230VAC	kW	0.2	
Rated operating current DC-1				
	30V	A	8	
	110V	A	0.3	
	220V	A	0.1	
Minimum switching load		V / mA	5 / 100	
Contact impedance		m $\Omega$	100	
Contact material				AgSnO <sub>2</sub>
<b>Operating times</b>				
Closing		ms	10	
Opening		ms	5	
<b>Operations</b>				
Mechanical life		cycles	10000000	
Electrical life AC1		cycles	50000	
<b>Coil characteristics</b>				
Average coil consumption AC at 20°C		VA	0.9	
Average coil consumption DC at 20°C		W	0.45	
Operating range				
	Closing	% $U_n$	75...110	
	Opening	% $U_n$	10...30	
Maximum cycle frequency		cycles/h	3600	
<b>Mechanical features</b>				
Max socket terminal tightening torque		Nm	0.6	
Socket screw tightening tool (cross / flat blade)				PH1 / 4.5mm
Conductor section	AWG/Kcmil			

	min	20	
	max	14	
IEC			
	min	mm <sup>2</sup>	0.5
	max	mm <sup>2</sup>	2.5
Operating position			
	normal	Any	
Fixing			
		On 35mm DIN rail and with screw	

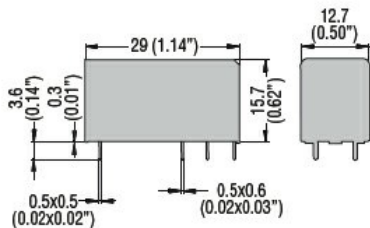
**Ambient conditions**

Temperature			
Operating temperature			
	min	°C	-40
	max	°C	+85
Storage temperature			
	min	°C	-40
	max	°C	+85

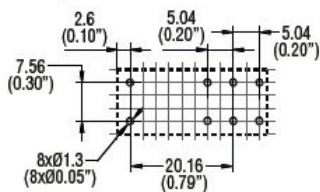
**Other features**

Indication	No
Mechanical contact position indicator	No
Mechanical test actuator	No

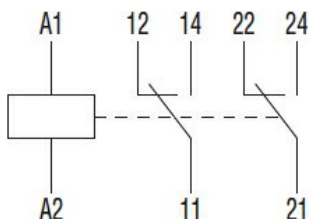
**Dimensions**



PCB layout



**Wiring diagrams**



**Certifications and compliance**

Compliance	
	IEC/EN 61810
Certificates	
	CSA
	cURus
	EAC

---

VDE

ETIM classification

ETIM 8.0

EC002055 -  
Solid state relay