



Product designation				Auxiliary contactor
Product type designation				BG00
Contact characteristics				
Number of poles	Nr.			4
Rated insulation voltage U_i IEC/EN	V			690
Rated impulse withstand voltage U_{imp}	kV			6
Operational frequency	min	Hz	25	
	max	Hz	400	
IEC Conventional free air thermal current I_{th}	A			10
Protection fuse	gG (IEC)		A	16
	Tightening torque for terminals			
	min	Nm	0.8	
	max	Nm	1	
	min	lbin	9	
	max	lbin	9	
Tightening torque for coil terminal	min	Nm	0.8	
	max	Nm	1	
	min	lbin	9	
	max	lbin	9	
Max number of wires simultaneously connectable	Nr.			2
Conductor section	AWG/Kcmil			
			max	12
Flexible w/o lug conductor section	min	mm ²	0.8	
	max	mm ²	2.5	
Flexible c/w lug conductor section	min	mm ²	1.5	
	max	mm ²	2.5	
Flexible with insulated spade lug conductor section	min	mm ²	1.5	
	max	mm ²	2.5	
Power terminal protection according to IEC/EN 60529				IP20
Mechanical features				
Operating position	normal allowable		Vertical plan $\pm 30^\circ$	
			Screw / DIN rail 35mm	
Fixing				Screw / DIN rail 35mm
Weight				g 200
Conductor section				

AWG/kcmil conductor section

	max			12
Auxiliary contact characteristics				
Thermal current I _{th}		A	10	
IEC/EN 60947-5-1 designation	A600 - Q600			
Operating current AC15				
	230V	A	3	
	400V	A	1.9	
	500V	A	1.4	
Operating current DC12				
	110V	A	2.9	
Operating current DC13				
	24V	A	2.9	
	48V	A	1.4	
	60V	A	1.2	
	110V	A	0.6	
	125V	A	0.55	
	220V	A	0.3	
	600V	A	0.1	
Operations				
Mechanical life		cycles	20000000	
Safety related data				
Performance level B10d according to EN/ISO 13489-1				
	mechanical load	cycles	20000000	
Mirror contacts according to IEC/EN 60947-4-1				
			YES	
EMC compatibility				
			YES	
DC coil operating				
DC rated control voltage		V	110	
DC operating voltage				
	pick-up		min	%Us 75
			max	%Us 115
	drop-out		min	%Us 10
			max	%Us 20
Average coil consumption ≤20°C				
	in-rush	W	3.2	
	holding	W	3.2	
Max cycles frequency				
Mechanical operation		cycles/h	3600	
Operating times				
Average time for U _s control				
	in AC			
	Closing NO		min	ms 12
			max	ms 21
	Opening NO		min	ms 9
			max	ms 18
	Closing NC		min	ms 17
			max	ms 26
	Opening NC			

		min	ms	7
		max	ms	17
in DC				
	Closing NO	min	ms	18
		max	ms	25
	Opening NO	min	ms	2
		max	ms	3
	Closing NC	min	ms	3
		max	ms	5
	Opening NC	min	ms	11
		max	ms	17

UL technical data

General USE

Contactor	AC current	A	10
Contact rating of auxiliary contacts according to UL	A600 - Q600		

Ambient conditions

Temperature

Operating temperature	min	°C	-50
	max	°C	+70
Storage temperature	min	°C	-60
	max	°C	+80

Max altitude

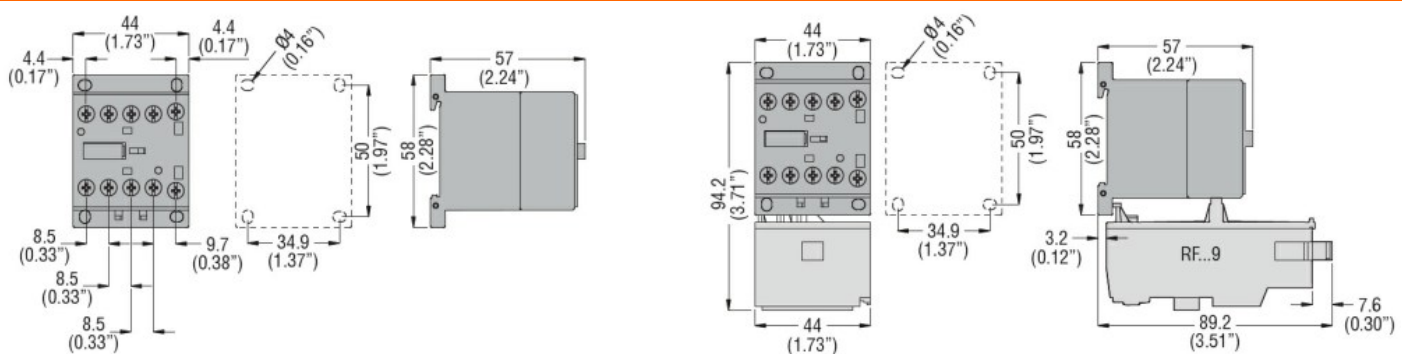
m 3000

Resistance & Protection

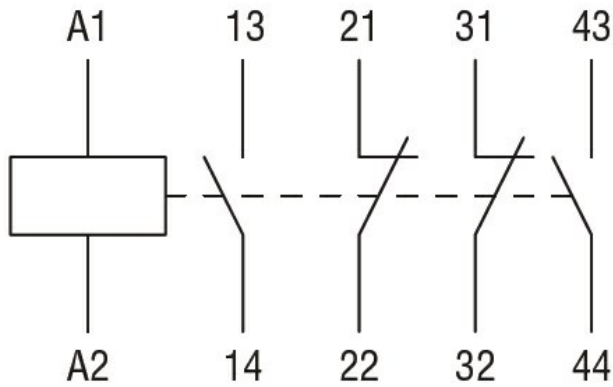
Pollution degree

3

Dimensions



Wiring diagrams



Certifications and compliance

Compliance

CSA C22.2 n° 60947-1

CSA C22.2 n° 60947-5-1

IEC/EN 60947-1

IEC/EN 60947-5-1

UL 60947-1

UL 60947-5-1

Certificates

cULus

EAC

ETIM classification

ETIM 8.0

EC000196 -
 Contactor relay