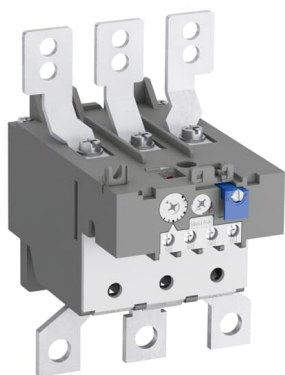


PRODUCT-DETAILS

# TA200DU-135

## TA200DU-135 Thermal Overload Relay 100 ... 135 A



### Informations générales

Extension du type de produit	TA200DU-135
Code de produit	1SAZ421201R1003
EAN	4013614286032
Description courte	TA200DU-135 Thermal Overload Relay 100 ... 135 A
Description longue	The TA200DU-135 thermal overload relay is an economic electromechanical protection device for the main circuit. It offers reliable and fast protection for motors in the event of overload or phase failure. The device has trip class 10A. Further features are the temperature compensation, trip contact (NC), signal contact (NO), automatic- or manual reset selectable, trip-free mechanism, STOP- and Test function and a trip indication. The overload relays are connected directly to the block contactors. Single mounting kits are available as accessory.

### Commande

Quantité minimum	1 pièce
Code douanier	85364900

### Downloads Préférés

Fiche produit, informations techniques	1SBC100214C0202
Instructions et manuels	2CDC106028M6802
Instructions et manuels (Partie 2)	1SAC200017M0002

Time-Current Characteristic Curve	1SAZ400502F0003
CAD Dimensional Drawing	2CDC001079B0201
Schéma dimensionnel	1SAZ400401F0001

## Dimensions

Produit Largeur Net	104 mm
Produit Hauteur Net	151 mm
Produit Longueur Net	126 mm
Poids net	0.76 kg

## Technique

Setting Range	100 ... 135 A
Tension	Circuit auxiliaire 440 V DC Circuit auxiliaire 500 V AC Circuit principal 690 V AC Circuit principal 440 V DC
Courant nominal de fonctionnement ( $I_e$ )	135 A
Fréquence assignée (f)	Circuit auxiliaire 50 Hz Circuit auxiliaire 60 Hz Circuit auxiliaire DC Circuit principal 60 Hz Circuit principal 50 Hz Circuit principal DC
Tension assignée de tenue aux chocs ( $U_{imp}$ )	Circuit auxiliaire 6 kV Circuit principal 6 kV
Tension assignée d'isolement ( $U_i$ )	690 V
Nombre de pôles	3
Number of Auxiliary Contacts NC	1
Number of Auxiliary Contacts NO	1
Number of Protected Poles	3
Courant thermique conventionnel à l'air libre ( $I_{th}$ )	Auxiliary Circuit NC 5 A Auxiliary Circuit NO 5 A
Courant assignée d'emploi AC-15 ( $I_e$ )	(120 V) NC 3 A (120 V) NO 1.5 A (240 V) NC 3 A (240 V) NO 1.5 A (400 V) NC 1.9 A (400 V) NO 1 A (440 V) NC 1 A (440 V) NO 1 A (500 V) NC 1 A (500 V) NO 1 A
Courant assignée d'emploi DC-13 ( $I_e$ )	(125 V) NC 0.25 A (125 V) NO 0.25 A (24 V) NC 1.25 A (24 V) NO 1.25 A (250 V) NC 0.12 A (250 V) NO 0.04 A (60 V) NC 0.25 A (60 V) NO 0.25 A
Indice de protection	Housing IP20 Main Circuit Terminals IP00
Degré de pollution	3

Connecting Capacity Auxiliary Circuit	Flexible with Ferrule 1/2x 0.75 ... 2.5 mm <sup>2</sup> Flexible 1/2x 0.75 ... 2.5 mm <sup>2</sup> Rigid 1/2x 0.75 ... 4 mm <sup>2</sup>
Connecting Capacity Main Circuit	Hole Diameter > 10 mm <sup>2</sup> Rigid or Flexible with Cable Lug 1x 25 ... 120 mm <sup>2</sup>
Couple de serrage	Auxiliary Circuit 1 ... 1.3 N·m Main Circuit 25 N·m
Wire Stripping Length	Auxiliary Circuit 9 mm
Recommended Screw Driver	Circuit auxiliaire Pozidriv 1 Circuit principal Open Bars
Type d'encastrement	1 ... 6
Power Loss	at Rated Operating Conditions per Pole 3.3 ... 6.0 W
Adapté pour	A145 A185 AF145 AF185 AF190 AF205
Normes et standards	IEC/EN 60947-1 IEC/EN 60947-4-1 IEC/EN 60947-5-1 UL 60947-1 UL 60947-4-1

## Technique UL/CSA

Maximum Operating Voltage UL/CSA	Circuit principal 600 V AC
Contact Rating UL/CSA	(NC:) B600 (NO:) C600
Connecting Capacity Main Circuit UL/CSA	Flexible 1x 4-0000 AWG Stranded 1x 4-0000 AWG
Connecting Capacity Auxiliary Circuit UL/CSA	Flexible 1/2x 18-14 AWG Stranded 1/2x 18-14 AWG
Tightening Torque UL/CSA	Auxiliary Circuit 12 in·lb Main Circuit 220 in·lb

## Environnement

Température de l'air ambiant	Operation -25 ... +55 °C Operation Compensated -25 ... +55 °C Storage -40 ... +70 °C
Ambient Air Temperature Compensation	Oui
Altitude de fonctionnement maximale autorisée	2000 m
Résistance aux chocs selon CEI 60068-2-27	11 ms Pulse 12g
Statut RoHS	Following EU Directive 2011/65/EU and Amendment 2015/863 July 22, 2019

## Certificats et Déclarations (Numéro de document)

Certificat ABS	1SAA941000-0102
Certificat BV	1SAA941000-0201
CB Certificate	1SAA941004-2003
CQC Certificate	CQC2016010309922936
Declaration of Conformity - CCC	2020980304001321
Déclaration de Conformité - CE	1SAD101100-3509

Declaration of Conformity - UKCA	1SAD201100-3509
Certificat DNV	1SAA941000-0304
DNV GL Certificate	1SAA941000-0304
EAC Certificate	1SAA941002-2702
Certificat GL	1SAA941000-0304
Certificat LR	1SAA941000-0504
Certificat RMRS	1SAA941000-0704
Certificat UL	E48139-19910930

## Emballage

Emballage Niveau 1 Unités	1 pièce
Emballage Niveau 1 Largeur	165 mm
Emballage Niveau 1 Hauteur	133 mm
Emballage Niveau 1 Longueur	151 mm
Emballage Niveau 1 Poids	1.01 kg
Emballage Niveau 1 EAN	4013614286032
Emballage Niveau 2 Unités	4 pièce
Emballage Niveau 2 Largeur	280 mm
Emballage Niveau 2 Hauteur	210 mm
Emballage Niveau 2 Longueur	395 mm
Emballage Niveau 2 Poids	8.786 kg
Emballage Niveau 2 EAN	4013614494253

## Classifications

Code de classification d'objet	F
ETIM 4	EC000106 - Thermal overload relay
ETIM 5	EC000106 - Thermal overload relay
ETIM 6	EC000106 - relais de surcharge thermique
ETIM 7	EC000106 - Thermal overload relay
ETIM 8	EC000106 - Thermal overload relay
eClass	V11.0 : 27371501
UNSPSC	39122330
Code de catégorie granulaire IDEA (IGCC)	5366 >> Thermal overload relay
E-Number (Finland)	3709359
E-Number (Sweden)	3228704

## Accessories

Identifiant	Description	Type	Quantity	Unit Of Measure
1SAZ401110R0001	DB200 Single Mounting Kit	DB200	1	piece
1SAZ401901R1001	LT200/A Terminal Shroud	LT200/A	1	piece
1SFA616162R1014	KPR3-101L Reset push button	KPR3-101L	1	piece

---

## Catégories

---

Produits basse tension → Produits de Contrôle, Protection et sécurité machines → Contacteurs → Relais de protection contre les surcharges

