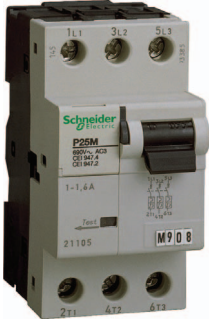
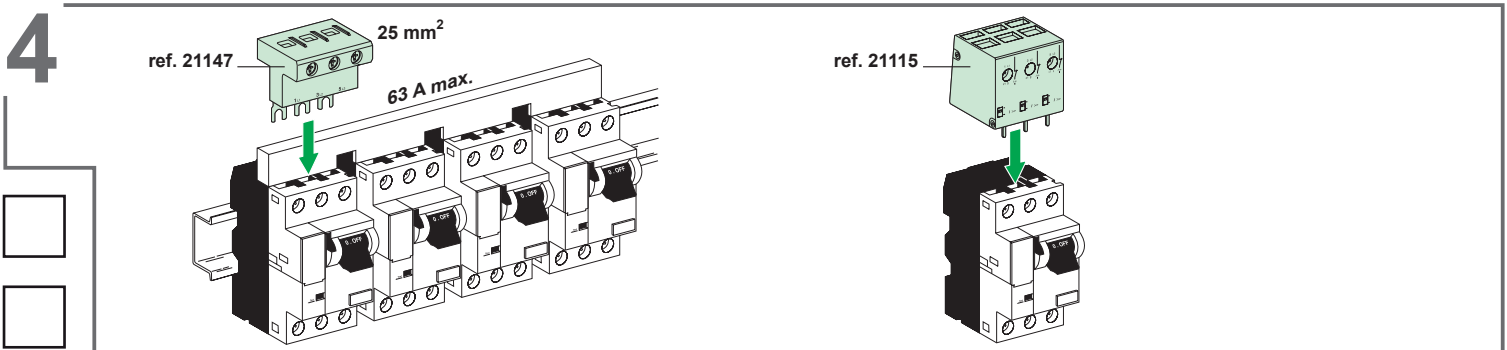
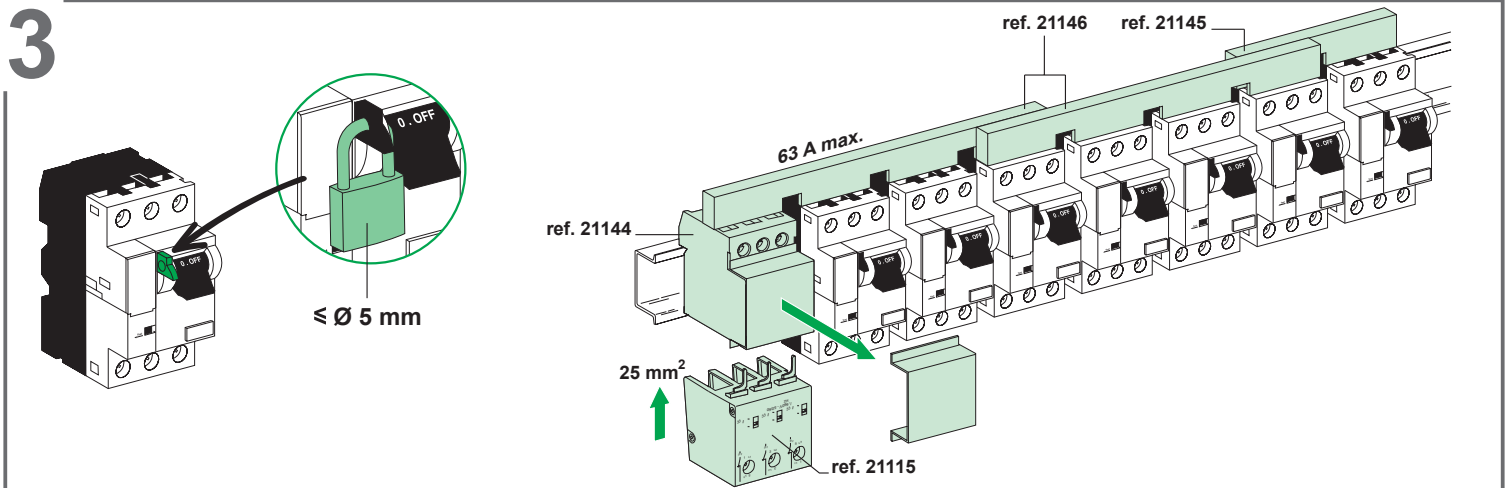
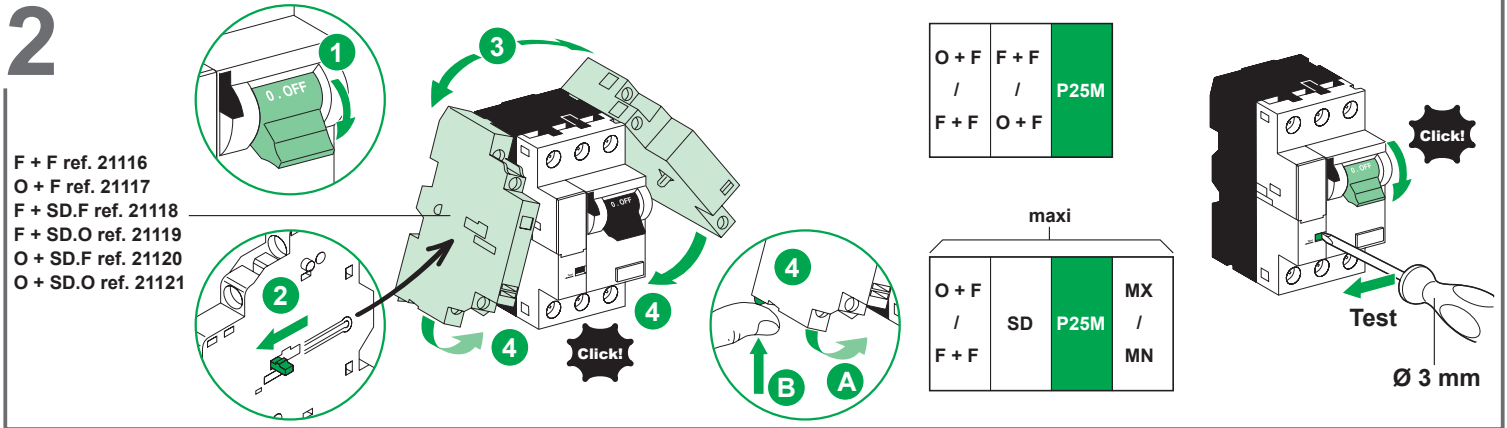
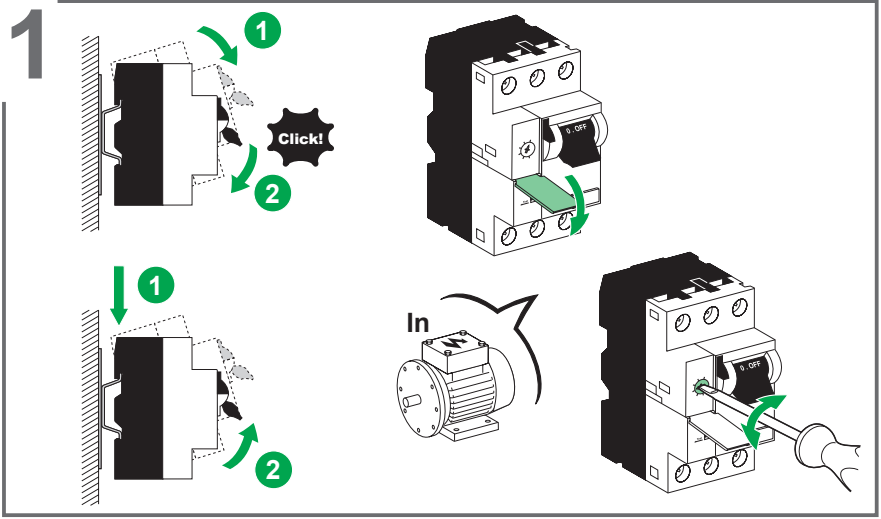


P25M



In (A)	ref.
0.1 - 0.16	21100
0.16 - 0.25	21101
0.25 - 0.4	21102
0.4 - 0.63	21103
0.63 - 1	21104
1 - 1.6	21105
1.6 - 2.5	21106
2.5 - 4	21107
4 - 6.3	21108
6 - 10	21109
9 - 14	21110
13 - 18	21111
17 - 23	21112
20 - 25	21113



Schneider Electric Industries SAS
35, rue Joseph Monier
CS 30323
F - 92506 Rueil Malmaison Cedex

RCS Nanterre 954 503 439
Capital social 896 313 776 €
www.schneider-electric.com

W9 1442059 0111 A03

Ce produit doit être installé, raccordé et utilisé en respectant les normes et/ou les règlements d'installation en vigueur.

En raison de l'évolution des normes et du matériel, les caractéristiques et cotes d'encombrement données ne nous engageant qu'après confirmation par nos services.

This product must be installed, connected and used in compliance with prevailing standards and/or installation regulations.

As standards, specifications and designs change from time to time, always ask for confirmation of the information given in this publication.