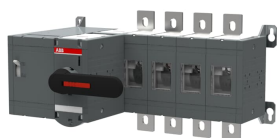


PRODUCT-DETAILS

OTM630E4M230C

OTM630E4M230C MOTORIZED SWITCH



Informations générales

Extension du type de produit	OTM630E4M230C
Code de produit	1SCA115357R1001
EAN	6417019477275
Description courte	OTM630E4M230C MOTORIZED SWITCH
Description longue	4-pole, motor operated, base mounted switch-d disconnecter with handle for manual operation, terminal bolt kit, handle and spare fuse storage clip and male connector for control circuit

Valeur Circulaire

Conflict Minerals Reporting Template (CMRT)	9AKK108467A5658
Environmental Product Declaration - EPD	1SCC303099D0201
REACH Declaration	1SCC011021D0201
Informations RoHS	1SCC011020D0201
Toxic Substances Control Act - TSCA	1SCC011025D0201

Eco Transparence

Environmental Product Declaration - EPD	1SCC303099D0201
---	-----------------

Commande

Quantité minimum	1 pièce
Code douanier	85365080
Pays d'origine	Finland (FI)

Downloads Préférés

Fiche produit, informations techniques	1SCC301020C0201
Instructions et manuels	1SCC303006M0205
Environmental Product Declaration - EPD	1SCC303099D0201

Dimensions

Produit Largeur Net	480 mm
Produit Hauteur Net	250 mm
Produit Longueur Net	312 mm
Poids net	14.9 kg

Technique

Rated Operational Current AC-21A (I_e)	(380 ... 415 V) 630 A (500 V) 630 A (690 V) 630 A (1000 V AC) 630 A
Rated Operational Current AC-22A (I_e)	(380 ... 415 V) 630 A (500 V) 630 A (690 V) 630 A
Rated Operational Current AC-23A (I_e)	(380 ... 415 V) 630 A (500 V) 630 A (690 V) 630 A
Rated Operational Power AC-23A (P_e)	(220 ... 240 V) 200 kW (400 ... 415 V) 355 kW (500 V) 400 kW (690 V) 630 kW
Courant thermique conventionnel à l'air libre (I_{th})	$\Theta = 40\text{ °C}$ 630 A
Conventional Thermal Current (I_{the})	Fully Enclosed 630 A
Tension assignée de tenue aux chocs (U_{imp})	12 kV
Tension assignée d'isolement (U_i)	acc. to IEC/EN 60664-1 1000 V
Tension	Circuit principal 1000 V
Rated Short-Circuit Making Capacity (I_{cm})	(690 V) 80 kA
Courant assigné de courte durée admissible (I_{cw})	for 1 s 20 kA
Rated Conditional Short-Circuit Current (I_{nc})	(800 A fuse, 500 V) 100 kA (800 A fuse, 690 V) 80 kA
Motor Operational Voltage	220 ... 240 V AC
Power Loss	at Rated Operating Conditions per Pole 25 W
Degré de pollution	3

Handle Color	Black
Handle Type	Direct mounted handle
Fourth Pole Position	Right Side
Fourth Pole Type	Switched - Simultaneous Function
Switches Operating Mechanism	Mechanism at the End of the Switch
Distance Between Phases	Standard
Position of Line Terminals	Top In - Bottom Out
Mode de fonctionnement	Front operated
Normes et standards	IEC 60947-3
Fonctions spéciales	No
Type de montage	Base mounting
Nombre de pôles	4
Indice de protection	Front IP00
Type de borne	Lug terminals
Couple de serrage	acc. IEC 60947-1 50 ... 75 N·m
Durabilité mécanique	10000
Lock Type	Yes

Technique UL/CSA

Couple de serrage	acc. IEC 60947-1 50 ... 75 N·m
-------------------	--------------------------------

Environnement

Statut RoHS	Following EU Directive 2011/65/EU and Amendment 2015/863 July 22, 2019
Toxic Substances Control Act - TSCA	1SCC011025D0201

Certificats et Déclarations (Numéro de document)

Certificat ATEX	No certification needed
Déclaration de Conformité - CE	1SCC301199D0202
REACH Declaration	1SCC011021D0201
Certificat UL	No certification needed
VDE Certificate	No certification needed

Emballage

Emballage Niveau 1 Unités	box 1 pièce
Emballage Niveau 1 Largeur	310 mm
Emballage Niveau 1 Longueur	560 mm
Emballage Niveau 1 Hauteur	330 mm
Emballage Niveau 1 Poids	18.9 kg
Emballage Niveau 1 EAN	6417019477275

Classifications

Code de classification d'objet	Q
ETIM 7	EC000216 - Switch disconnecter
ETIM 8	EC000216 - Switch disconnecter
ETIM 9	EC000216 - Switch disconnecter (low voltage)
eClass	V11.1 : 27371403
Catégorie DEEE	5. Small Equipment (No External Dimension More Than 50 cm)
E-Number (Finland)	3638151

Catégories

Produits basse tension → Interrupteurs → Motorized Switch-Disconnectors

