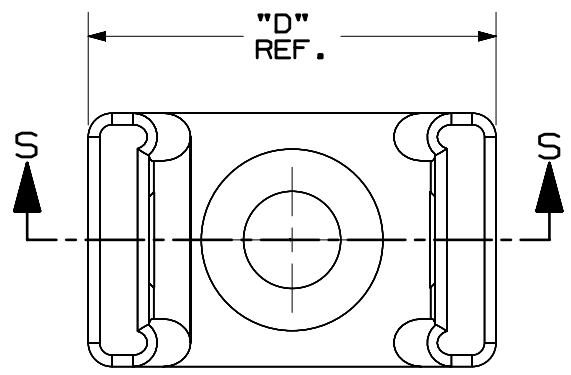


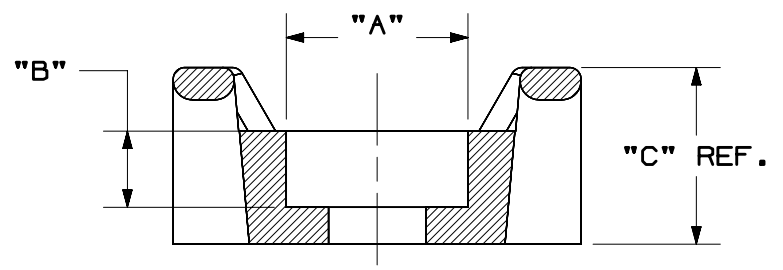
THIS COPY IS PROVIDED ON A RESTRICTED BASIS AND IS NOT TO BE USED IN ANY WAY DETRIMENTAL TO THE INTERESTS OF PANDUIT CORP.

PANDUIT PART NUMBER	RECOMMENDED FASTENER	"A" IN. (mm)	"B" IN. [mm]	"C" REF. IN. [mm]	"D" REF. IN. [mm]
SSM2S6	#6 [M3] SCREW	0.270-0.290 [6.86-7.37]	0.092 [2.34]	0.265-0.285 [6.73-7.24]	0.620-0.640 [15.75-16.26]
SSM3S8	#8 [M4] SCREW	0.305-0.330 [7.75-8.38]	0.105 [2.67]	0.363-0.383 [9.22-9.73]	0.853-0.873 [21.67-22.17]



NOTE:

1. SEE WWW.PANDUIT.COM FOR PART NUMBER SUFFIX DESIGNATION FOR PACKAGE SIZE, PART MATERIAL, PART COLOR AND THIRD PARTY RECOGNITION OR COMPLIANCE.
2. HOLE DIMENSIONS SHOULD ACCOMMODATE SPECIFIED RECOMMENDED FASTENER.
3. DIMENSIONAL TOLERANCES ARE: IN [mm]
 - .x ± 0.05 [1.3]
 - .xx ± 0.02 [0.5]
 - .xxx ± 0.010 [0.25]
 ANGLES ±5°



SECTION S-S

PART NUMBER		SEE TABLE		
TITLE				
STRONGHOLD MOUNTS SCREW APPLIED				
CUSTOMER DRAWING				
ITEM REVISION NAME		00586EBE/00		
DATASET FILE NAME		00586EBE_DC/00A		
		THIRD ANGLE PROJECTION		
MATERIAL		NYLON 6/6		DRAWING NUMBER
				00586EBE_DC
DRAWN BY	DATE	CHK	SCALE	SHEET 1 OF 1
JBN	01-31-20	BMAG	NONE	A

A-SIZE CUSTOMER

00A	03-10-20	JBN	BMAG	RGB JHAC	RELEASED	076846
REV	DATE	BY	CHK	APR	DESCRIPTION	ECN