



Product designation	Rotary cam switches		
Product type designation	GX32		
<b>General characteristics</b>			
Switching diagram	90 - ON/OFF switch 1 pole		
N° of elements	1		
Mounting form	O88 - Rear mounting with red/yellow handle padlockable in 0, door coupling and protection covers		
<b>Contact characteristics</b>			
Rated insulation voltage $U_i$	IEC/EN	V	690
	UL/CSA	V	600
Rated impulse withstand voltage $U_{imp}$		kV	6
Conventional free air thermal current $I_{th}$	IEC/EN	A	32
	UL/CSA	A	32
Rated operational voltage		V	440
Rated operational impulse voltage		kV	4
Maximum fuse size for short-circuit protection $I_n$ (gG)	10kA	A	35
	15kA	A	35
	25kA	A	35
Rated short time current $I_{cw}$		1s	A
			1000
Conductivity			10/5 mA/V
Operational current $I_e$ IEC/EN	AC1/AC21A		A
			32
	AC15		
		110V	A
		220/230V	A
		380/400V	A
	660/690V	A	
Rated operational power in AC	Three-phase AC-3		
		220/230V	kW
		380/440V	kW
		500/690V	kW
			7.5
			11
		11	
Single-phase AC-3		110V	kW
			1.8

ROTARY CAM SWITCH GX SERIES, ON-OFF SWITCH 1 POLE 32A, FOR REAR MOUNTING WITH RED/YELLOW HANDLE PADLOCKABLE IN 0, DOOR COUPLING AND PROTECTION COVERS, FRONT PLATE 65X65MM

	220/230V	kW	3.5
	380/440V	kW	5.5
<hr/>			
Three-phase AC23A	220/230V	kW	8
	380/440V	kW	15
	500/690V	kW	15
<hr/>			
Single-phase AC23A	110V	kW	2.2
	220/230V	kW	3.5
	380/440V	kW	6
<hr/>			
Rated operational current in DC			
DC21A	48V	A	32
	60V	A	32
	110V	A	5
	220V	A	0.8
	440V	A	0.25
<hr/>			
DC23A (poles in series)	24V	A	32 (1)
	48V	A	32 (2)
	60V	A	32 (3)
	110V	A	15 (3)
	220V	A	12 (4)
<hr/>			
DC13	24V	A	32
	48V	A	25
	60V	A	14
	110V	A	3
	220V	A	0.5
	440V	A	0.15
<hr/>			
Power dissipation		W	1.6
<b>Mechanical features</b>			
Terminals screw			M4
Tightening torque for terminals max		Nm	1.2
<hr/>			
Conductor size			
AWG - Rigid cable	min	AWG	16
	Max	AWG	8
<hr/>			
AWG - Flexible cable	min	AWG	16
	Max	AWG	10
<hr/>			
Conductor size (IEC) - Flexible cable	min	mm <sup>2</sup>	1.5
	Max	mm <sup>2</sup>	6
<hr/>			
Conductor size (IEC) - Rigid cable	min	mm <sup>2</sup>	1.5
	Max	mm <sup>2</sup>	10
<hr/>			
Mechanical life		cycles	1X10 <sup>6</sup>
<b>UL technical data</b>			
Motor power for direct-on-line control for three-phase motor	120V	HP	3
	240V	HP	7.5
	480V	HP	15

ROTARY CAM SWITCH GX SERIES, ON-OFF SWITCH 1 POLE 32A, FOR REAR MOUNTING WITH RED/YELLOW HANDLE PADLOCKABLE IN 0, DOOR COUPLING AND PROTECTION COVERS, FRONT PLATE 65X65MM

	600V	HP	15
for single-phase motor			
	120V	HP	1.5
	240V	HP	3

**Ambient conditions**

Temperature

Operating temperature

min	°C	-25
max	°C	+55

Storage temperature

min	°C	-40
max	°C	+70

**Resistance & Protection**

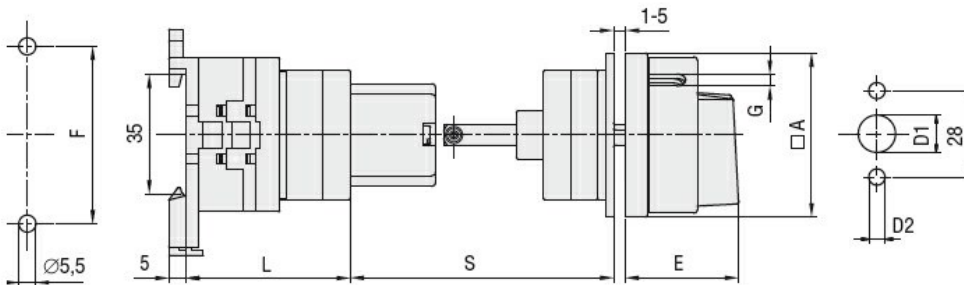
Frontal IP degree

IP65

Terminals IP degree

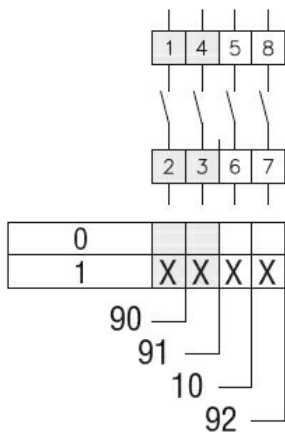
IP20

**Dimensions**



Series	Dimensions								L			
	□A	D1	D2	E	F	□K	G	S	1	2	3...12	
<b>GX16</b>	48	12	5	34.2	52	36	5	45-55	40	48.5	57	133.5
<b>GX20</b>	48	12	5	34.2	52	36	5	45-55	40	48.5	57	133.5
<b>GX32</b>	65	14	5	38	68	48	6	45-55	51	63	75	183
<b>GX40</b>	65	14	5	38	68	48	6	45-55	51	63	75	183

**Wiring diagrams**



**Certifications and compliance**

Compliance

CSA C22.2 n° 14

IEC/EN/BS 60947-1

ROTARY CAM SWITCH GX SERIES, ON-OFF SWITCH 1 POLE 32A, FOR REAR MOUNTING  
WITH RED/YELLOW HANDLE PADLOCKABLE IN 0, DOOR COUPLING AND PROTECTION  
COVERS, FRONT PLATE 65X65MM

---

IEC/EN/BS 60947-3

---

IEC/EN/BS 60947-5-1

---

IEC/EN/BS 61058-1

---

UL60947-4-1

Certificates

---

cULus

---

EAC

ETIM classification

ETIM 8.0

EC001029 -  
Selector switch,  
complete