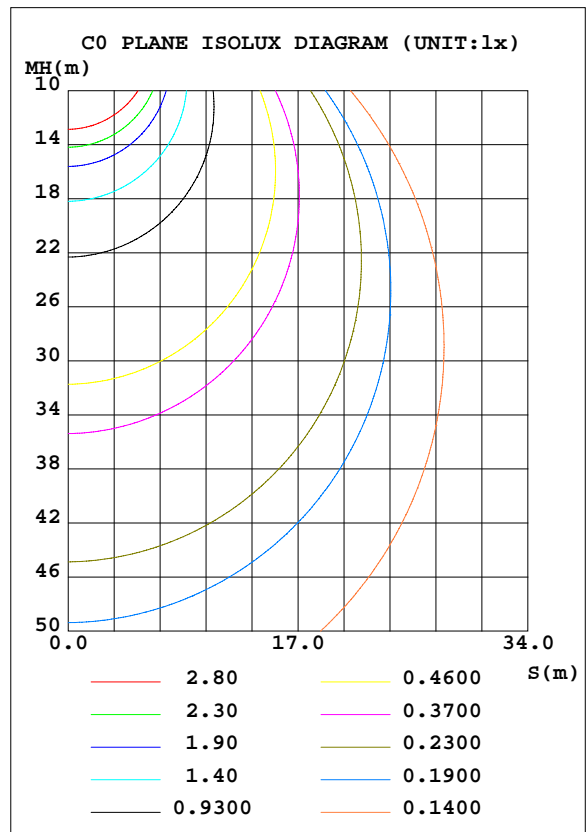
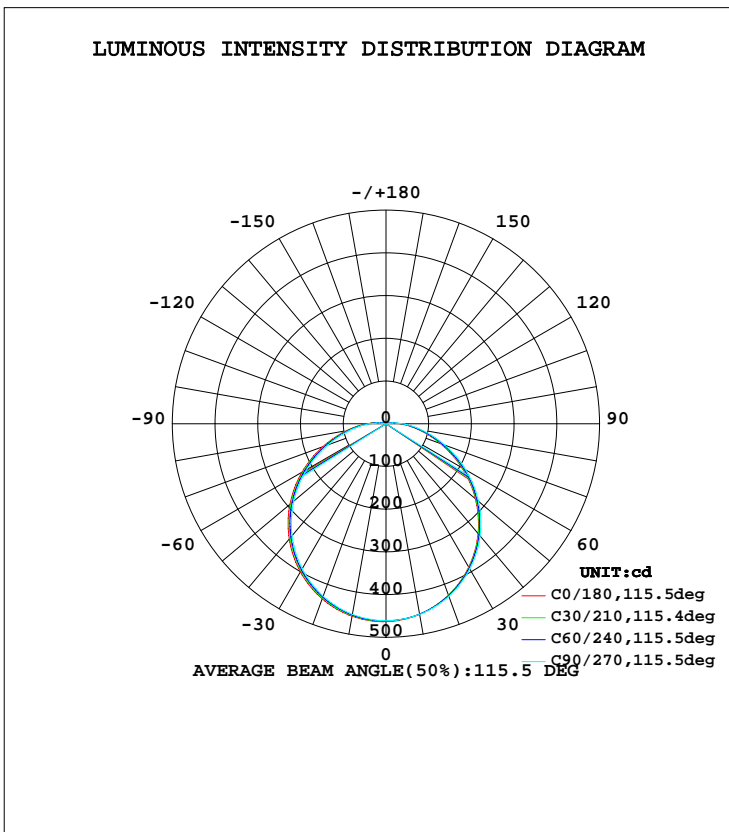


LUMINAIRE PHOTOMETRIC TEST REPORT

Test:U:229.3V I:0.0641A P:13.89W PF:0.9447 Lamp Flux:1454.44x1 lm		
NAME: LED LIGHT	TYPE:CEILING LIGHT	WEIGHT:
SPEC.:0028920010	DIM.: \varnothing 308*98mm	SERIAL No.:
MFR.: LiT	SUR.: \varnothing 263.7mm	PROTECTION ANGLE:

DATA OF LAMP		PHOTOMETRIC DATA Eff: 104.69 lm/W			
MODEL	0028920010	I _{max} (cd)	463.4	S/MH(C0/180)	1.29
NOMINAL POWER(W)	15	LOR(%)	100.0	S/MH(C90/270)	1.26
RATED VOLTAGE(V)	220-240	TOTAL FLUX(lm)	1454.4	η UP, DN(C0-180)	1.2, 48.5
NOMINAL FLUX(lm)	1454.44	CIE CLASS	DIRECT	η UP, DN(C180-360)	1.2, 49.1
LAMPS INSIDE	1	η up(%)	2.4	CIBSE SHR NOM	1.25
TEST VOLTAGE(V)	230	η down(%)	97.6	CIBSE SHR MAX	1.35



C Range: 0 - 360DEG
 C Interval: 30.0DEG
 Test Speed: HIGH
 Temperature:25.3DEG
 Operators:
 Test Date:2021-03-04

γ Range: 0 - 180DEG
 γ Interval: 1.0DEG
 Test System:EVERFINE GO-2000B_V1 SYSTEM V2.0.291
 Humidity:65.0%
 Test Distance:5.910m [K=1.0000]
 Remarks:

ZONAL FLUX DIAGRAM

ZONAL FLUX DIAGRAM:

γ	C0	C45	C90	C135	C180	C225	C270	C315	γ	Φ zone	Φ total	#lum,lamp
10	453.0	452.6	453.1	453.5	457.5	455.2	453.1	451.6	0- 10	43.67	43.67	3,3
20	427.3	427.9	429.8	431.1	436.2	432.9	429.7	427.3	10- 20	125.2	168.9	11.6,11.6
30	387.4	389.1	392.4	394.6	400.6	396.5	392.1	388.9	20- 30	190.4	359.3	24.7,24.7
40	335.4	338.1	342.6	345.8	352.2	347.6	342.1	338.0	30- 40	230.9	590.1	40.6,40.6
50	273.5	277.1	282.8	286.9	293.6	288.4	282.0	277.1	40- 50	242.0	832.1	57.2,57.2
60	204.7	209.0	215.6	220.3	227.0	221.5	214.4	209.1	50- 60	223.0	1055	72.5,72.5
70	135.6	139.9	146.5	151.1	157.2	151.9	145.1	140.1	60- 70	178.5	1234	84.8,84.8
80	76.05	79.68	85.12	88.62	93.78	89.34	83.69	79.62	70- 80	120.5	1354	93.1,93.1
90	33.59	35.84	39.03	41.62	45.05	42.25	38.43	35.72	80- 90	65.70	1420	97.6,97.6
100	9.387	10.46	9.948	13.21	14.82	13.51	9.914	10.43	90-100	26.01	1446	99.4,99.4
110	1.048	1.324	1.314	1.952	2.237	2.007	1.331	1.325	100-110	5.835	1452	99.8,99.8
120	0.4631	0.4529	0.4611	0.4644	0.4681	0.4657	0.4609	0.4749	110-120	0.6973	1452	99.9,99.9
130	0.5744	0.5641	0.5770	0.5711	0.5839	0.5815	0.5744	0.5792	120-130	0.4634	1453	99.9,99.9
140	0.6602	0.6650	0.6789	0.6765	0.6882	0.6892	0.6764	0.6891	130-140	0.4843	1453	99.9,99.9
150	0.7344	0.7483	0.7669	0.7659	0.7855	0.7761	0.7645	0.7752	140-150	0.4543	1454	100,100
160	0.8154	0.8213	0.8503	0.8363	0.8572	0.8503	0.8451	0.8410	150-160	0.3720	1454	100,100
170	0.8595	0.8641	0.8896	0.8851	0.8855	0.8833	0.8792	0.8730	160-170	0.2438	1454	100,100
180	0.8780	0.8827	0.8966	0.8908	0.8896	0.8873	0.8989	0.8896	170-180	0.0842	1454	100,100
DEG	LUMINOUS INTENSITY:cd									UNIT:lm		

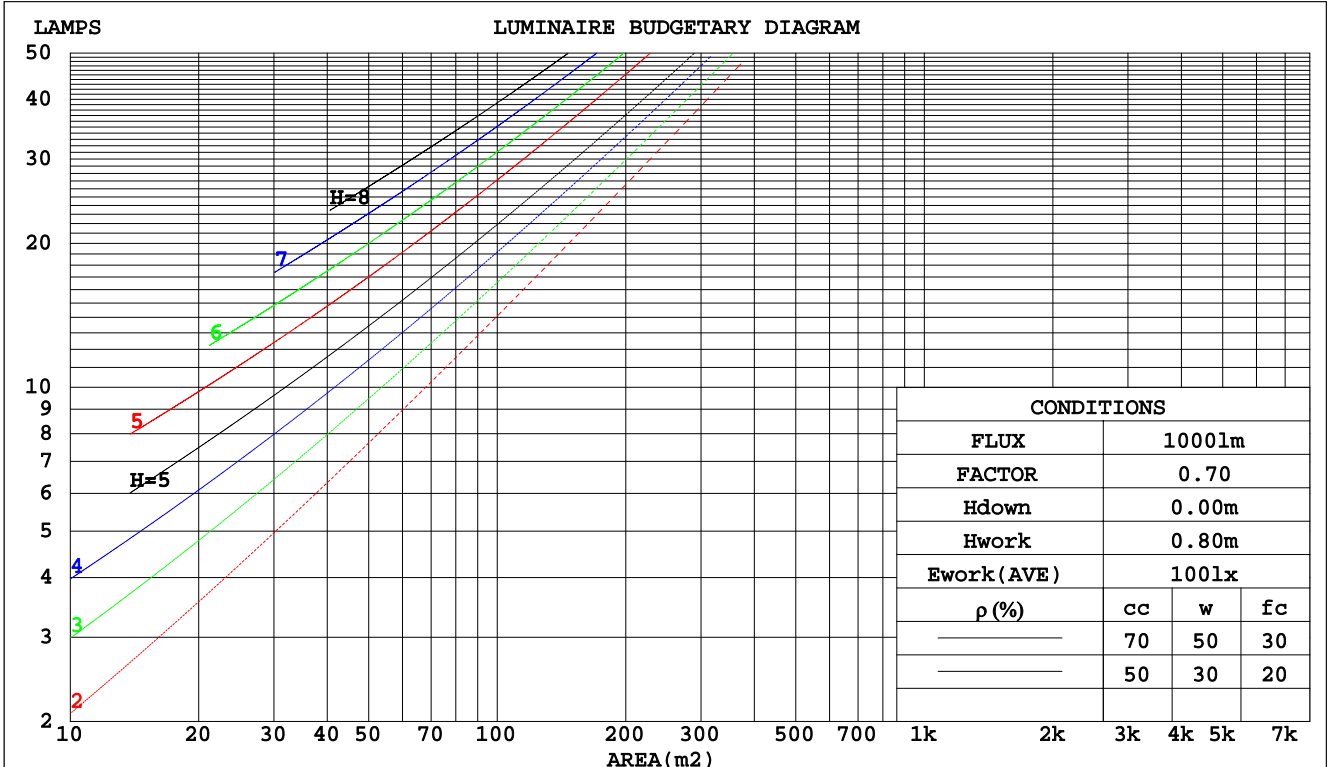
C Range: 0 - 360DEG
 C Interval: 30.0DEG
 Test Speed: HIGH
 Temperature:25.3DEG
 Operators:
 Test Date:2021-03-04

γ Range: 0 - 180DEG
 γ Interval: 1.0DEG
 Test System:EVERFINE GO-2000B_V1 SYSTEM V2.0.291
 Humidity:65.0%
 Test Distance:5.910m [K=1.0000]
 Remarks:

CU AND LUMINAIRE BUDGETARY ESTIMATE DIAGRAM

Test:U:229.3V I:0.0641A P:13.89W PF:0.9447 Lamp Flux:1454.44x1 lm		
NAME: LED LIGHT	TYPE:CEILING LIGHT	WEIGHT:
SPEC.:0028920010	DIM.: Ø 308*98mm	SERIAL No.:
MFR.: LiT	SUR.: Ø 263.7mm	PROTECTION ANGLE:

pcc	80%			70%			50%			30%			10%			0
pw	50%	30%	10%	50%	30%	10%	50%	30%	10%	50%	30%	10%	50%	30%	10%	0
pfc	20%			20%			20%			20%			20%			0
RCR	RCR:Room Cavity Ratio															
	Coefficients of Utilization(CU)															
0.0	1.18	1.18	1.18	1.15	1.15	1.15	1.10	1.10	1.10	1.05	1.05	1.05	.00	.00	.00	.98
1.0	1.01	.97	.92	.99	.95	.91	.94	.91	.87	.90	.87	.84	.86	.83	.81	.79
2.0	.88	.80	.74	.86	.79	.73	.82	.76	.71	.78	.73	.69	.75	.71	.67	.65
3.0	.77	.68	.61	.75	.67	.61	.72	.65	.59	.68	.63	.58	.66	.61	.56	.54
4.0	.68	.59	.52	.66	.58	.51	.63	.56	.50	.61	.54	.49	.58	.53	.48	.46
5.0	.60	.51	.44	.59	.50	.44	.57	.49	.43	.54	.48	.42	.52	.46	.42	.40
6.0	.54	.45	.39	.53	.45	.38	.51	.43	.38	.49	.42	.37	.47	.41	.37	.34
7.0	.49	.40	.34	.48	.40	.34	.46	.39	.33	.45	.38	.33	.43	.37	.32	.30
8.0	.45	.36	.30	.44	.36	.30	.42	.35	.30	.41	.34	.29	.40	.34	.29	.27
9.0	.41	.33	.27	.40	.32	.27	.39	.32	.27	.38	.31	.26	.37	.31	.26	.24
10.0	.38	.30	.25	.37	.30	.24	.36	.29	.24	.35	.29	.24	.34	.28	.24	.22



C Range: 0 - 360DEG
 C Interval: 30.0DEG
 Test Speed: HIGH
 Temperature:25.3DEG
 Operators:
 Test Date:2021-03-04

γ Range: 0 - 180DEG
 γ Interval: 1.0DEG
 Test System:EVERFINE GO-2000B_V1 SYSTEM V2.0.291
 Humidity:65.0%
 Test Distance:5.910m [K=1.0000]
 Remarks:

WEC AND CCEC

Test:U:229.3V I:0.0641A P:13.89W PF:0.9447 Lamp Flux:1454.44x1 lm		
NAME: LED LIGHT	TYPE:CEILING LIGHT	WEIGHT:
SPEC.:0028920010	DIM.: Ø 308*98mm	SERIAL No.:
MFR.: LiT	SUR.: Ø 263.7mm	PROTECTION ANGLE:

ρcc	80%			70%			50%			30%			10%			0
ρw	50%	30%	10%	50%	30%	10%	50%	30%	10%	50%	30%	10%	50%	30%	10%	0
ρfc	20%			20%			20%			20%			20%			0
RCR	RCR:Room Cavity Ratio						Wall Exitance Coefficients(WEC)									
0.0																
1.0	.345	.196	.062	.337	.192	.061	.322	.185	.059	.308	.178	.057	.296	.171	.055	
2.0	.312	.171	.052	.305	.168	.052	.291	.162	.050	.279	.157	.049	.268	.152	.048	
3.0	.283	.151	.045	.277	.148	.045	.265	.144	.044	.254	.139	.043	.244	.135	.042	
4.0	.258	.134	.039	.253	.132	.039	.242	.129	.038	.233	.125	.038	.224	.122	.037	
5.0	.237	.121	.035	.232	.119	.035	.223	.116	.034	.214	.113	.034	.206	.110	.033	
6.0	.219	.110	.031	.214	.108	.031	.206	.106	.031	.198	.103	.030	.191	.101	.030	
7.0	.203	.100	.028	.199	.099	.028	.191	.097	.028	.184	.095	.028	.178	.092	.027	
8.0	.189	.092	.026	.185	.091	.026	.179	.089	.025	.172	.087	.025	.166	.085	.025	
9.0	.176	.085	.024	.173	.084	.024	.167	.083	.023	.162	.081	.023	.156	.079	.023	
10.0	.166	.079	.022	.163	.079	.022	.157	.077	.022	.152	.076	.021	.147	.074	.021	

ρcc	80%			70%			50%			30%			10%			0
ρw	50%	30%	10%	50%	30%	10%	50%	30%	10%	50%	30%	10%	50%	30%	10%	0
ρfc	20%			20%			20%			20%			20%			0
RCR	RCR:Room Cavity Ratio						Ceiling Cavity Exitance Coefficients(CCEC)									
0.0	.209	.209	.209	.178	.178	.178	.122	.122	.122	.070	.070	.070	.022	.022	.022	
1.0	.201	.174	.150	.172	.149	.129	.118	.103	.089	.068	.059	.052	.022	.019	.017	
2.0	.193	.150	.114	.166	.129	.099	.113	.089	.069	.065	.052	.040	.021	.017	.013	
3.0	.186	.133	.091	.159	.115	.079	.109	.080	.055	.063	.047	.033	.020	.015	.011	
4.0	.178	.120	.076	.152	.104	.066	.105	.072	.046	.061	.042	.027	.020	.014	.009	
5.0	.170	.110	.065	.146	.095	.056	.101	.066	.040	.058	.039	.024	.019	.013	.008	
6.0	.163	.101	.057	.140	.088	.050	.096	.061	.035	.056	.036	.021	.018	.012	.007	
7.0	.156	.094	.051	.134	.082	.045	.093	.057	.032	.054	.034	.019	.017	.011	.006	
8.0	.149	.089	.047	.128	.077	.041	.089	.054	.029	.052	.032	.017	.017	.010	.006	
9.0	.143	.084	.044	.123	.073	.038	.085	.051	.027	.050	.030	.016	.016	.010	.005	
10.0	.137	.079	.041	.118	.069	.036	.082	.049	.025	.048	.029	.015	.015	.009	.005	

C Range: 0 - 360DEG
 C Interval: 30.0DEG
 Test Speed: HIGH
 Temperature:25.3DEG
 Operators:
 Test Date:2021-03-04

γ Range: 0 - 180DEG
 γ Interval: 1.0DEG
 Test System:EVERFINE GO-2000B_V1 SYSTEM V2.0.291
 Humidity:65.0%
 Test Distance:5.910m [K=1.0000]
 Remarks:

UGR(Unified Glare Rating) Table

Test:U:229.3V I:0.0641A P:13.89W PF:0.9447 Lamp Flux:1454.44x1 lm										
NAME: LED LIGHT					TYPE:CEILING LIGHT			WEIGHT:		
SPEC.:0028920010					DIM.: \varnothing 308*98mm			SERIAL No.:		
MFR.: LiT					SUR.: \varnothing 263.7mm			PROTECTION ANGLE:		
ceiling/cavity	0.7	0.7	0.5	0.5	0.3	0.7	0.7	0.5	0.5	0.3
walls	0.5	0.3	0.5	0.3	0.3	0.5	0.3	0.5	0.3	0.3
working plane	0.2	0.2	0.2	0.2	0.2	0.2	0.2	0.2	0.2	0.2
Room dimensions	Viewed crosswise					Viewed endwise				
x = 2H y = 2H	19.4	21.0	19.7	21.2	21.5	19.6	21.1	19.9	21.4	21.6
3H	21.1	22.5	21.4	22.8	23.1	21.3	22.8	21.7	23.0	23.3
4H	21.8	23.2	22.2	23.5	23.8	22.1	23.5	22.5	23.8	24.1
6H	22.5	23.8	22.9	24.1	24.5	22.9	24.2	23.3	24.5	24.8
8H	22.9	24.1	23.3	24.4	24.8	23.3	24.5	23.7	24.9	25.2
12H	23.2	24.4	23.6	24.8	25.1	23.7	24.9	24.1	25.2	25.6
4H 2H	20.1	21.4	20.4	21.7	22.0	20.2	21.6	20.6	21.9	22.2
3H	21.9	23.1	22.3	23.5	23.8	22.1	23.3	22.5	23.7	24.0
4H	22.8	23.9	23.3	24.3	24.7	23.1	24.2	23.5	24.6	25.0
6H	23.7	24.7	24.2	25.1	25.5	24.0	25.0	24.5	25.4	25.8
8H	24.1	25.1	24.6	25.5	25.9	24.5	25.4	25.0	25.8	26.3
12H	24.6	25.4	25.1	25.9	26.3	25.0	25.9	25.5	26.3	26.8
8H 4H	23.2	24.1	23.7	24.5	25.0	23.4	24.4	23.9	24.8	25.2
6H	24.3	25.1	24.8	25.5	26.0	24.6	25.4	25.1	25.8	26.3
8H	24.9	25.6	25.4	26.1	26.6	25.2	25.9	25.7	26.4	26.9
12H	25.5	26.1	26.0	26.6	27.1	25.9	26.5	26.4	27.0	27.5
12H 4H	23.3	24.1	23.7	24.6	25.0	23.5	24.3	24.0	24.8	25.2
6H	24.5	25.1	25.0	25.6	26.1	24.7	25.4	25.2	25.9	26.4
8H	25.1	25.7	25.6	26.2	26.7	25.4	26.0	26.0	26.5	27.1
Variations with the observer position at spacings:										
S = 1.0H	+ 0.1 / - 0.2					+ 0.1 / - 0.2				
1.5H	+ 0.2 / - 0.3					+ 0.2 / - 0.3				
2.0H	+ 0.1 / - 0.3					+ 0.1 / - 0.3				

CIE Pub.117 Corrected 1454 lm Total Lamp Luminous Flux.(8log(F/F0) = 1.3)

C Range: 0 - 360DEG
 C Interval: 30.0DEG
 Test Speed: HIGH
 Temperature:25.3DEG
 Operators:
 Test Date:2021-03-04

γ Range: 0 - 180DEG
 γ Interval: 1.0DEG
 Test System:EVERFINE GO-2000B_V1 SYSTEM V2.0.291
 Humidity:65.0%
 Test Distance:5.910m [K=1.0000]
 Remarks:

UTILIZATION FACTORS TABLE

Test:U:229.3V I:0.0641A P:13.89W PF:0.9447 Lamp Flux:1454.44x1 lm		
NAME: LED LIGHT	TYPE:CEILING LIGHT	WEIGHT:
SPEC.:0028920010	DIM.: Ø 308*98mm	SERIAL No.:
MFR.: LiT	SUR.: Ø 263.7mm	PROTECTION ANGLE:

REFLECTANCE										
Ceiling	0.8	0.8	0.8	0.7	0.7	0.7	0.5	0.5	0.5	0
Walls	0.7	0.5	0.3	0.7	0.5	0.3	0.7	0.5	0.3	0
Working plane	0.2	0.2	0.2	0.2	0.2	0.2	0.2	0.2	0.2	0
ROOM INDEX	UTILIZATION FACTORS(PERCENT) $k(RI) \times RCR = 5$									
k = 0.60	55	43	36	54	43	36	53	42	36	29
0.80	65	53	45	64	52	45	62	52	45	37
1.00	73	61	54	72	61	53	69	62	53	45
1.25	80	69	61	79	68	61	76	67	60	52
1.50	85	74	67	83	73	66	80	72	65	57
2.00	92	83	76	90	81	75	86	79	73	65
2.50	96	87	81	94	86	80	90	83	78	69
3.00	100	92	86	97	90	85	93	87	82	73
4.00	104	97	92	101	95	90	97	92	88	78
5.00	106	101	96	104	99	94	99	95	91	81
ROOM INDEX	UF(total)									Direct
According to DIN EN 13032-2 2004			Suspended				SHRNOM = 1.25			

C Range: 0 - 360DEG
 C Interval: 30.0DEG
 Test Speed: HIGH
 Temperature:25.3DEG
 Operators:
 Test Date:2021-03-04

γ Range: 0 - 180DEG
 γ Interval: 1.0DEG
 Test System:EVERFINE GO-2000B_V1 SYSTEM V2.0.291
 Humidity:65.0%
 Test Distance:5.910m [K=1.0000]
 Remarks:

ISOCANDELA DIAGRAM

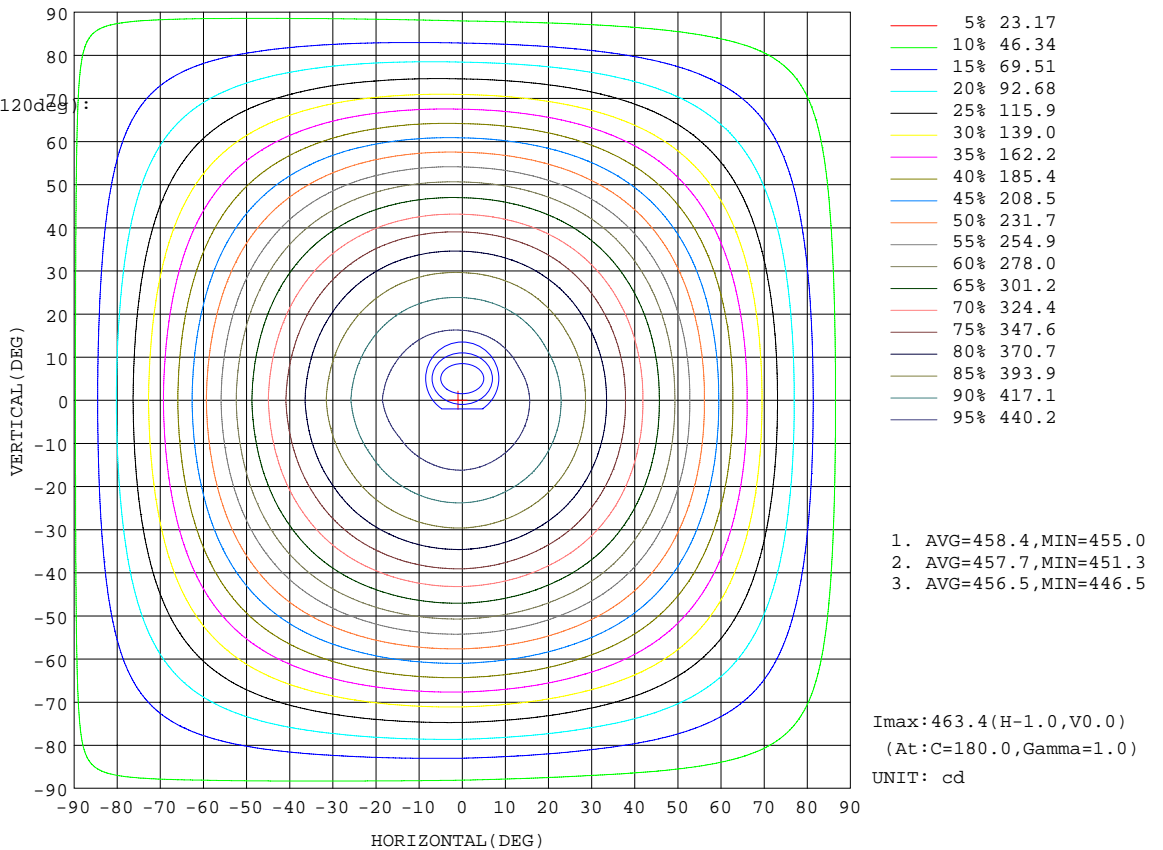
Test:U:229.3V I:0.0641A P:13.89W PF:0.9447 Lamp Flux:1454.44x1 lm		
NAME: LED LIGHT	TYPE:CEILING LIGHT	WEIGHT:
SPEC.:0028920010	DIM.: \varnothing 308*98mm	SERIAL No.:
MFR.: LiT	SUR.: \varnothing 263.7mm	PROTECTION ANGLE:

Conical surface Flux(90deg):

711.67 lm
%lum = 48.9%
%lamp = 48.9%

Conical surface Flux(120deg):

1055.2 lm
%lum = 72.5%
%lamp = 72.5%

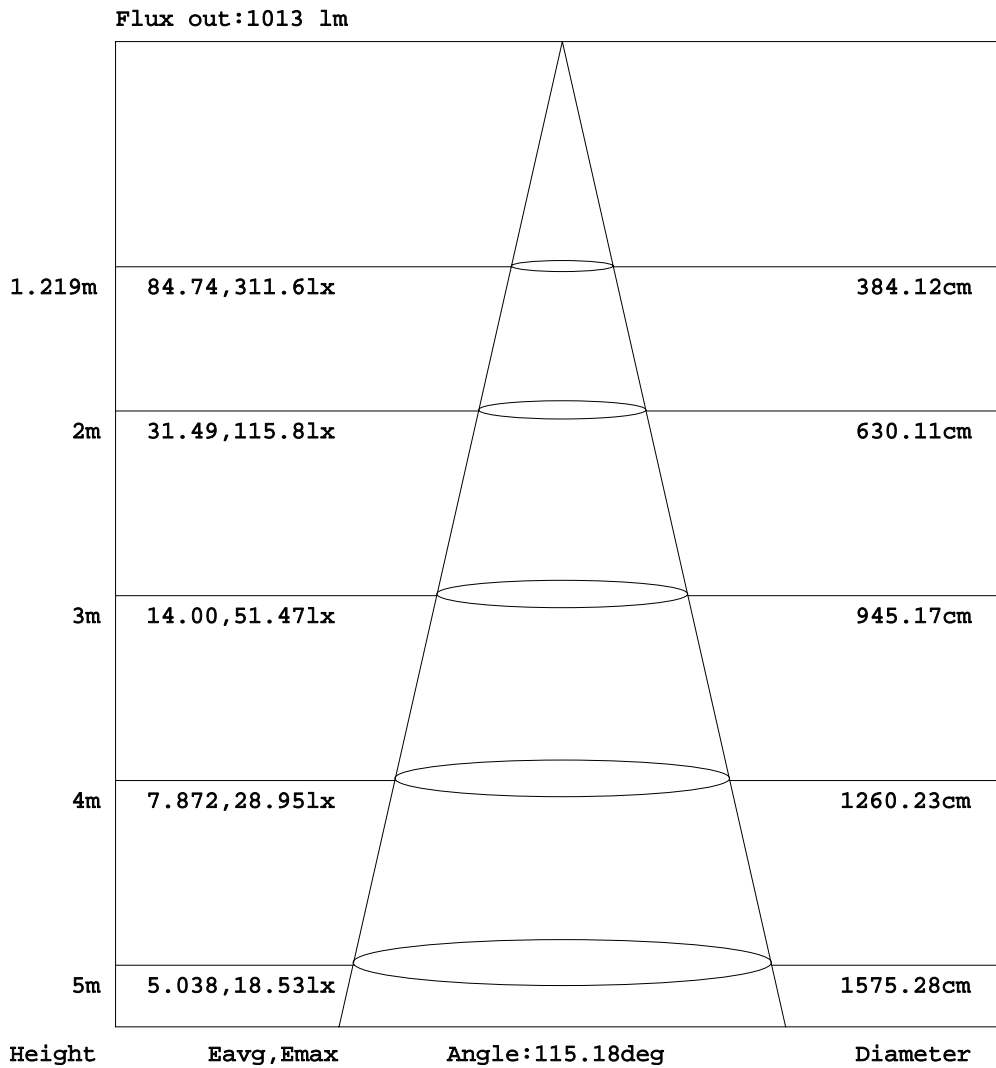


C Range: 0 - 360DEG
C Interval: 30.0DEG
Test Speed: HIGH
Temperature: 25.3DEG
Operators:
Test Date: 2021-03-04

γ Range: 0 - 180DEG
 γ Interval: 1.0DEG
Test System: EVERFINE GO-2000B_V1 SYSTEM V2.0.291
Humidity: 65.0%
Test Distance: 5.910m [K=1.0000]
Remarks:

AAI Figure

Test:U:229.3V I:0.0641A P:13.89W PF:0.9447 Lamp Flux:1454.44x1 lm		
NAME: LED LIGHT	TYPE:CEILING LIGHT	WEIGHT:
SPEC.:0028920010	DIM.: \varnothing 308*98mm	SERIAL No.:
MFR.: LiT	SUR.: \varnothing 263.7mm	PROTECTION ANGLE:



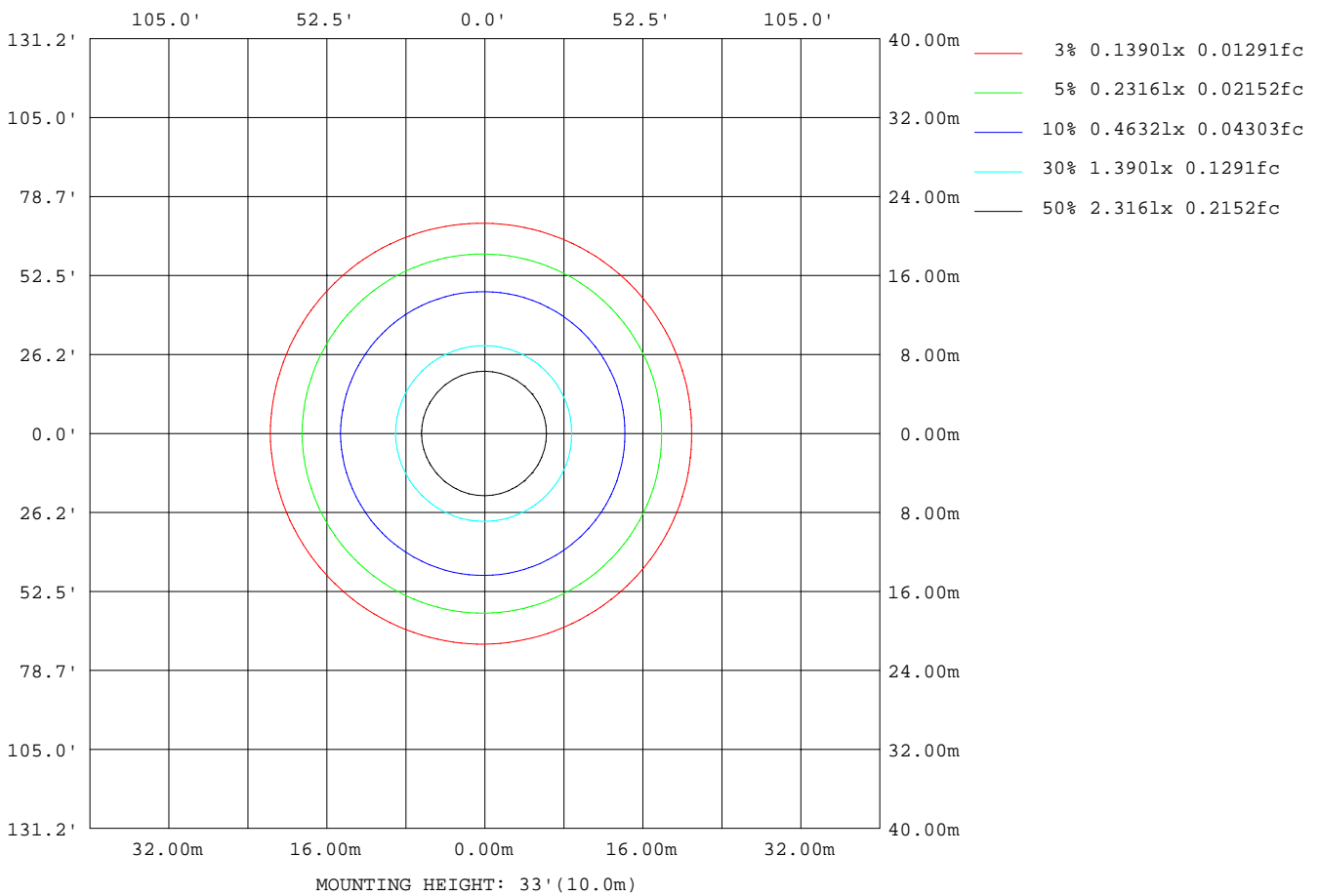
Note:The Curves indicate the illuminated area and the average illumination when the luminaire is at different distance.

C Range: 0 - 360DEG
 C Interval: 30.0DEG
 Test Speed: HIGH
 Temperature:25.3DEG
 Operators:
 Test Date:2021-03-04

γ Range: 0 - 180DEG
 γ Interval: 1.0DEG
 Test System:EVERFINE GO-2000B_V1 SYSTEM V2.0.291
 Humidity:65.0%
 Test Distance:5.910m [K=1.0000]
 Remarks:

ISOLUX DIAGRAM

Test:U:229.3V I:0.0641A P:13.89W PF:0.9447 Lamp Flux:1454.44x1 lm		
NAME: LED LIGHT	TYPE:CEILING LIGHT	WEIGHT:
SPEC.:0028920010	DIM.: \varnothing 308*98mm	SERIAL No.:
MFR.: LiT	SUR.: \varnothing 263.7mm	PROTECTION ANGLE:



C Range: 0 - 360DEG
 C Interval: 30.0DEG
 Test Speed: HIGH
 Temperature:25.3DEG
 Operators:
 Test Date:2021-03-04

γ Range: 0 - 180DEG
 γ Interval: 1.0DEG
 Test System:EVERFINE GO-2000B_V1 SYSTEM V2.0.291
 Humidity:65.0%
 Test Distance:5.910m [K=1.0000]
 Remarks:

LED Avg.L Report

Test:U:229.3V I:0.0641A P:13.89W PF:0.9447 Lamp Flux:1454.44x1 lm		
NAME: LED LIGHT	TYPE:CEILING LIGHT	WEIGHT:
SPEC.:0028920010	DIM.: \varnothing 308*98mm	SERIAL No.:
MFR.: LiT	SUR.: \varnothing 263.7mm	PROTECTION ANGLE:

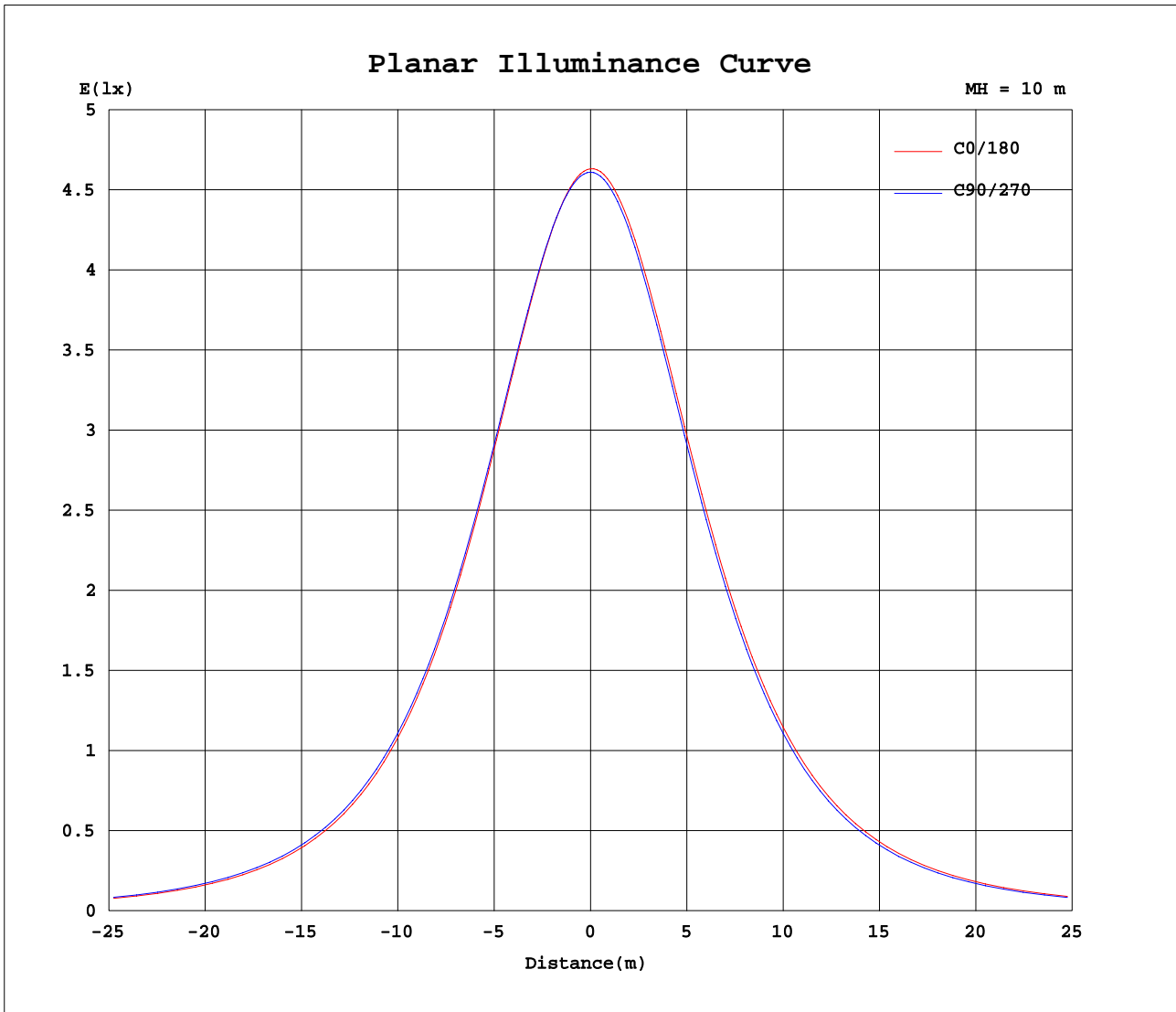
AvgL	cd/m2
L_0~180(65)av	7377
L_0~180(75)av	7598
L_0~180(85)av	11859
L_90~270(65)av	7345
L_90~270(75)av	7557
L_90~270(85)av	11804
L_45(65)av	7345
L_45(75)av	7552
L_45(85)av	11744

Standard: GB/T 29293-2012

C Range: 0 - 360DEG
 C Interval: 30.0DEG
 Test Speed: HIGH
 Temperature:25.3DEG
 Operators:
 Test Date:2021-03-04

γ Range: 0 - 180DEG
 γ Interval: 1.0DEG
 Test System:EVERFINE GO-2000B_V1 SYSTEM V2.0.291
 Humidity:65.0%
 Test Distance:5.910m [K=1.0000]
 Remarks:

Planar Illuminance Curve



C Range: 0 - 360DEG
 C Interval: 30.0DEG
 Test Speed: HIGH
 Temperature: 25.3DEG
 Operators:
 Test Date: 2021-03-04

γ Range: 0 - 180DEG
 γ Interval: 1.0DEG
 Test System: EVERFINE GO-2000B_V1 SYSTEM V2.0.291
 Humidity: 65.0%
 Test Distance: 5.910m [K=1.0000]
 Remarks:

LUMINOUS DISTRIBUTION INTENSITY DATA

Test:U:229.3V I:0.0641A P:13.89W PF:0.9447 Lamp Flux:1454.44x1 lm		
NAME: LED LIGHT	TYPE:CEILING LIGHT	WEIGHT:
SPEC.:0028920010	DIM.: \varnothing 308*98mm	SERIAL No.:
MFR.: LiT	SUR.: \varnothing 263.7mm	PROTECTION ANGLE:

Table--1

UNIT: cd

C(DEG) γ (DEG)	0	30	60	90	120	150	180	210	240	270	300	330							
0	463	462	461	461	461	460	463	462	461	461	461	460							
5	460	459	459	459	459	459	462	461	460	459	458	458							
10	453	453	453	453	453	454	457	456	455	453	452	451							
15	442	442	442	443	444	445	449	447	445	443	442	441							
20	427	428	428	430	430	432	436	434	432	430	428	426							
25	409	410	411	413	414	415	420	418	415	413	411	409							
30	387	388	390	392	394	396	401	398	395	392	390	388							
35	363	364	366	369	370	373	378	375	372	368	366	363							
40	335	337	339	343	344	347	352	349	346	342	340	336							
45	306	308	310	314	316	319	324	321	318	313	310	307							
50	274	276	278	283	285	289	294	290	287	282	279	275							
55	240	242	245	250	253	256	261	257	254	249	246	242							
60	205	207	211	216	219	222	227	223	220	214	211	207							
65	170	172	176	181	184	187	192	188	185	179	176	172							
70	136	138	141	146	149	153	157	154	150	145	142	138							
75	104	107	109	114	117	120	124	121	117	113	110	106							
80	76.1	78.6	80.8	85.1	87.0	90.2	93.8	90.8	87.9	83.7	81.3	78.0							
85	52.7	54.6	56.5	60.1	61.7	64.3	67.2	65.0	62.3	59.2	56.7	54.2							
90	33.6	35.1	36.5	39.0	40.6	42.7	45.1	43.3	41.2	38.4	36.7	34.7							
95	19.2	20.2	21.4	23.0	24.2	25.8	27.5	26.3	24.7	22.7	21.4	20.0							
100	9.39	10.1	10.8	9.95	12.6	13.8	14.8	14.0	13.0	9.91	10.8	10.0							
105	3.65	4.03	4.48	4.15	5.39	6.11	6.62	6.11	5.70	4.15	4.45	4.07							
110	1.05	1.20	1.44	1.31	1.78	2.12	2.24	2.04	1.97	1.33	1.38	1.27							
115	0.43	0.43	0.50	0.45	0.57	0.65	0.62	0.60	0.62	0.49	0.47	0.48							
120	0.46	0.46	0.44	0.46	0.47	0.46	0.47	0.46	0.48	0.46	0.48	0.47							
125	0.51	0.52	0.50	0.52	0.50	0.52	0.53	0.51	0.53	0.51	0.53	0.51							
130	0.57	0.58	0.55	0.58	0.56	0.58	0.58	0.58	0.58	0.57	0.58	0.57							
135	0.62	0.63	0.61	0.63	0.61	0.63	0.64	0.63	0.64	0.62	0.64	0.63							
140	0.66	0.68	0.65	0.68	0.67	0.69	0.69	0.68	0.70	0.68	0.69	0.69							
145	0.71	0.72	0.70	0.73	0.71	0.73	0.74	0.73	0.75	0.73	0.74	0.73							
150	0.73	0.76	0.74	0.77	0.76	0.77	0.79	0.77	0.79	0.76	0.78	0.77							
155	0.79	0.79	0.78	0.81	0.80	0.81	0.83	0.81	0.83	0.81	0.82	0.81							
160	0.82	0.83	0.81	0.85	0.83	0.85	0.86	0.84	0.86	0.85	0.85	0.83							
165	0.84	0.85	0.85	0.88	0.87	0.87	0.88	0.88	0.88	0.87	0.88	0.85							
170	0.86	0.87	0.86	0.89	0.88	0.89	0.89	0.88	0.88	0.88	0.89	0.86							
175	0.88	0.88	0.88	0.89	0.88	0.89	0.89	0.89	0.89	0.89	0.89	0.88							
180	0.88	0.88	0.88	0.90	0.89	0.89	0.89	0.89	0.89	0.90	0.90	0.88							

C Range: 0 - 360DEG
 C Interval: 30.0DEG
 Test Speed: HIGH
 Temperature:25.3DEG
 Operators:
 Test Date:2021-03-04

γ Range: 0 - 180DEG
 γ Interval: 1.0DEG
 Test System:EVERFINE GO-2000B_V1 SYSTEM V2.0.291
 Humidity:65.0%
 Test Distance:5.910m [K=1.0000]
 Remarks: