

- COMMANDE DOUBLE
- CONTROL DUPLO
- DOBLE MANDO

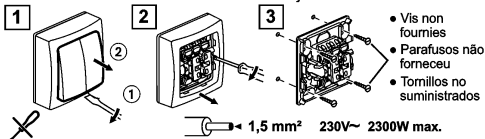
FABRIQUÉ EN FRANCE



ALA2221WH

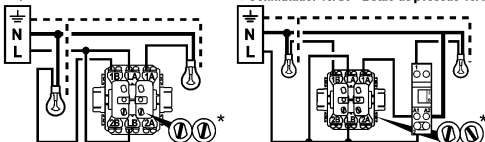


• DEMONTAGE / FIXATION • DESMONTAGEM / FIXAÇÃO • DESMONTAJE / FIJACIÓN



• Double va-et-vient 10AX • Comutador duplo 10AX • Doble conmutador 10AX

• Va-et-vient 10AX + Pousoir 10A
• Comutador 10AX + Pulsador 10A
• Conmutador 10AX + Botão de pressão 10A



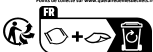
* Mode Va-et-vient * Mode Pousoir

Livré en mode pousoir : * Va-et-vient

— N (neutre / neutro) : bleu - azul

— L (phase / fase) : tout sauf bleu et vert/jaune / tudo exceto azul e verde/amarelo / todos excepto azul y verde/amarillo

--- ⊥ (terre / tierra / terra) : vert/jaune / verde/amarelo / verde/amarillo



ALA2221WH Made in France



3414972643306