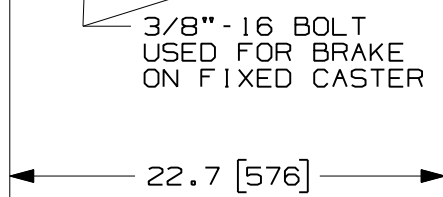
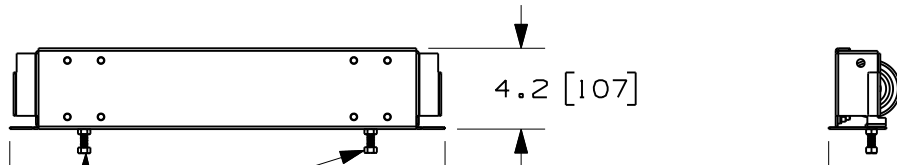
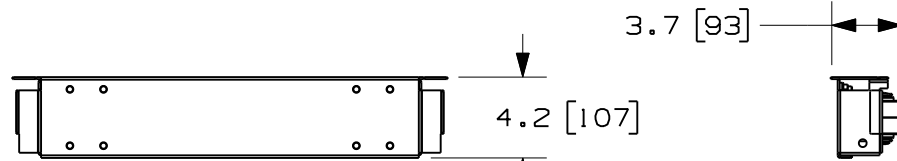
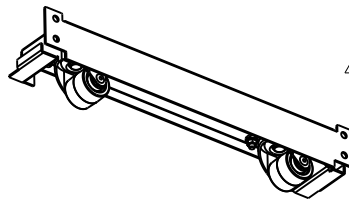


THIS COPY IS PROVIDED ON A RESTRICTED BASIS AND IS NOT TO BE USED IN ANY WAY DETRIMENTAL TO THE INTERESTS OF PANDUIT CORP.

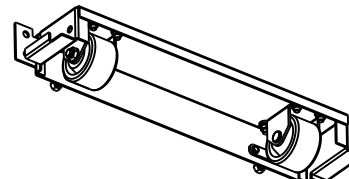
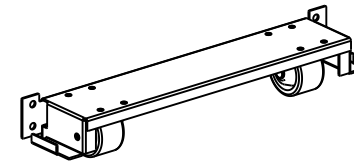
PANDUIT PART NO.	WEIGHT
RCSTR	19 LBS. (9 Kg)



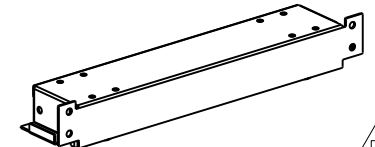
- NOTES:
- VISIT OUR ON-LINE CATALOG AT [WWW.PANDUIT.COM](http://WWW.PANDUIT.COM) FOR A LIST OF CURRENT PARTS APPLICABLE FOR USE WITH THIS PRODUCT.
  - DIMENSIONS IN PARENTHESES ARE METRIC (mm).
  - PARTS SUPPLIED:
    - 1- FIXED CASTER AND BRACKET ASSEMBLY
    - 1- SWIVEL CASTER AND BRACKET ASSEMBLY
    - 4- 3/8-16 x 1" HEX HEAD BOLT
    - 4- 3/8-16 HEX NUT
    - 8- 3/8" INTERNAL TOOTH LOCKWASHER
    - 4- FLOOR ATTACHMENT BRACKETS
    - 1- INSTRUCTION SHEET



SWIVEL CASTER AND BRACKET ASSEMBLY



FIXED CASTER AND BRACKET ASSEMBLY



MODEL FILENAME	V10679EL/02.PRT
CAD FILENAME/LAYERS	V10679EL_DC/02A.PRT

PANDUIT CORP. TINLEY PARK, ILLINOIS

RCSTR - CASTER BRACKET KIT FOR 4 POST RACKS  
CUSTOMER DRAWING

UNLESS OTHERWISE SPECIFIED, DIMENSIONAL TOLERANCES ARE:		UNLESS OTHERWISE SPECIFIED,	
INCHES	[METRIC - MILLIMETER]	ALL DIMENSIONS ARE GIVEN	
X.X +/- 0.03	X +/- 0.8	IN INCHES, THIRD ANGLE PROJECTION.	
X.XX +/- 0.015	X.X +/- 0.4		
X.XXX +/- 0.005	X.XX +/- 0.13		

REV	DATE	BY	CHK	DESCRIPTION	ECN	R	CUST	SUP	OTH
O2A	12-7-10	PM	SRK	B. REVISED COMPONENTS GEOMETRY					
O1B	10-1-10	PM	SRK	RELEASED TO PRODUCTION A. REVISED NOTE 3 (ADD PARTS) AND WEIGHT					
O1A	03-01-10	PM		DRAWING RELEASED					

DRAWN BY	PM	MAT'L:	N/A	SCALE	NONE
DATE	03-01-10			DRAWING NO.	V10679EL-DC
CHK'D				DWG	A
				SIZE	A