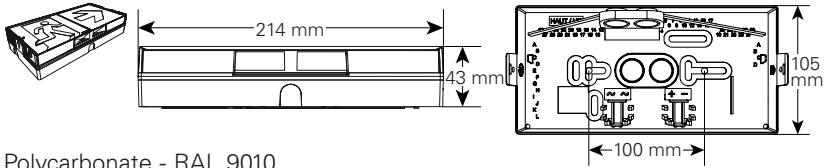
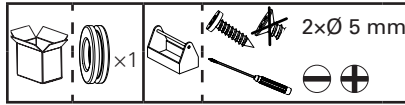
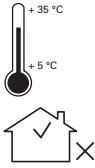
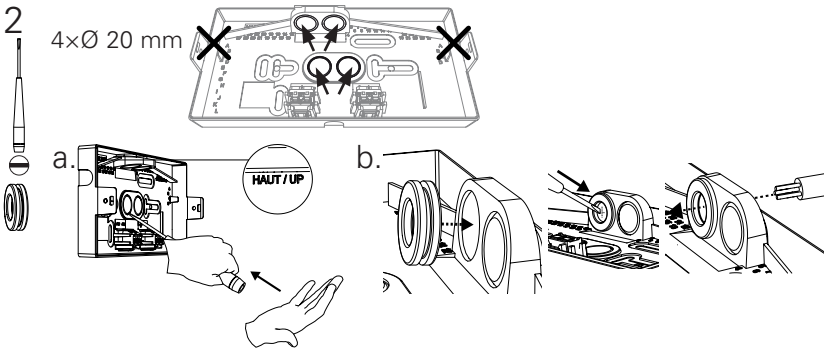
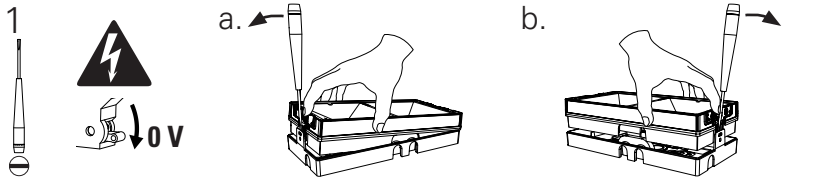


PLANETE JOUR II ADR CGLine+

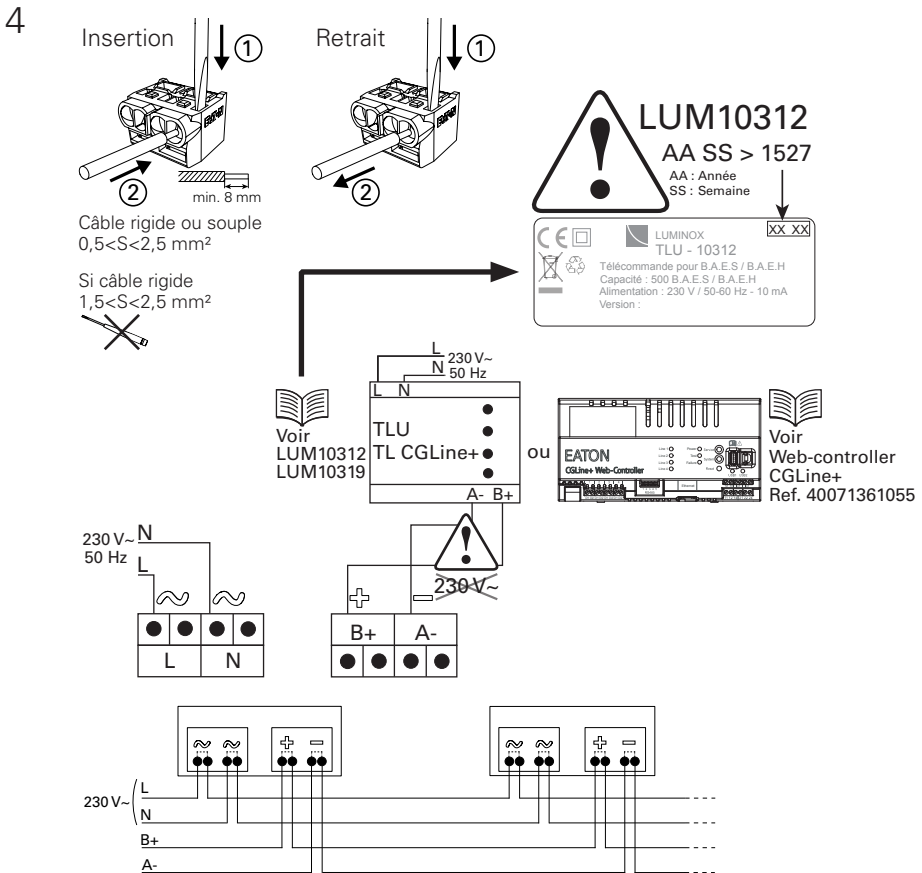
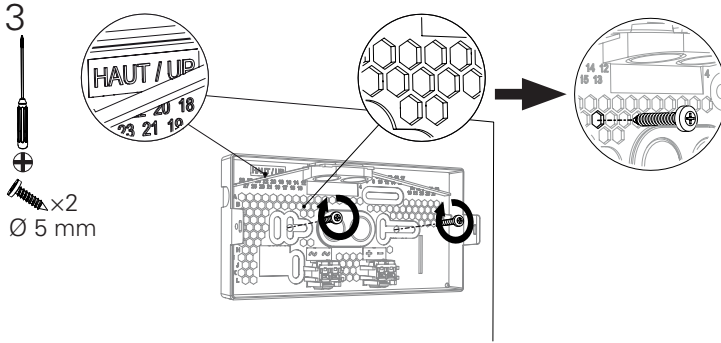
+ centrale de gestion web CGLine+



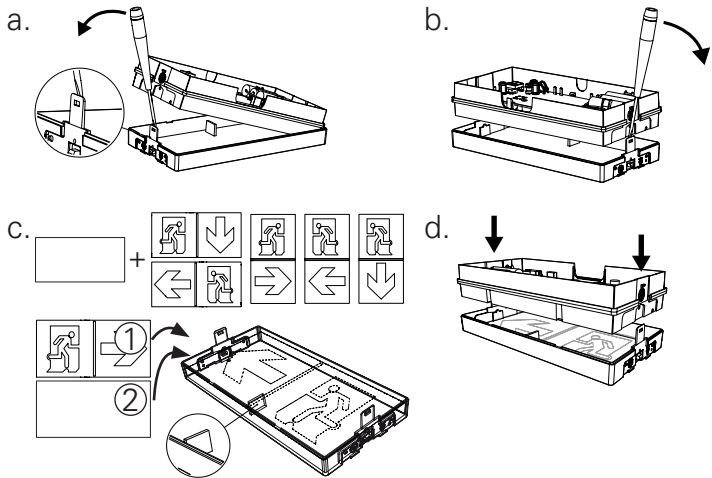
Polycarbonate - RAL 9010



Powering Business Worldwide



5



6

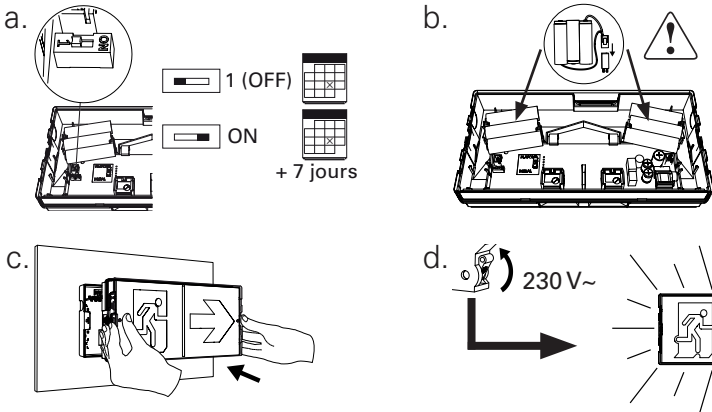
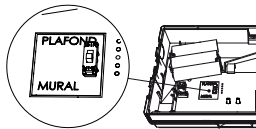
Plafond



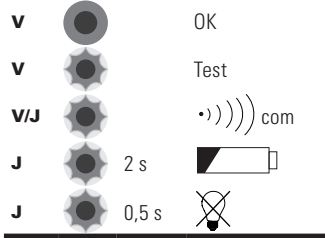
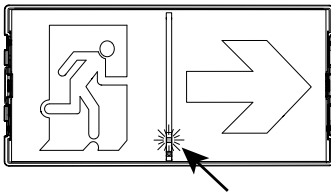
Voir Manuel

Kit Drapeau Plafond Boîtier
Epsilon LUM10540

Mural



Autotest



Test

charge



lampe



Non remplaçable

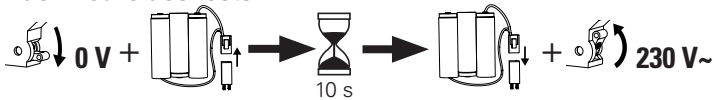
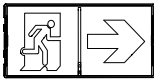
batterie



À remplacer Réf. LUM11049

Cooper Sécurité SAS (Groupe EATON) s'engage à assurer la pérennité des pièces consommables (lampes et batteries) pendant 8 ans à compter de la date de la dernière mise sur le marché du produit.

Programmation de l'heure des tests



ou



TLU - LUM10312 (AA SS>1527)/
 TL CGLine+ - LUM10319
 Web-controller CGLine+ - 40071361055



NF IP/K BAES/BAEH BAES BAEH EN FR



PLANETE JOUR II
ADR CGLine+

LUM11701

T1612Z

43/08

2 Packs
3 x 1,2 V/0,6 Ah Ni-Cd
EATON EcoSafe by SAFT
Réf. LUM11049

1h 45 lm
8 x LED 3,6 V 30 mA

5h 8 lm
2 x LED 35 mA
ou 4 x LED 20 mA

230 V~ /50-60 Hz
0,98 W

NFEN 60598.1
NFEN 60598.2.22
C 71820-1 (NFEN 62034)
NF 4113
NFC 71803

Eaton
EMEA Headquarters
Route de la Longeraie 7
1110 Morges, Switzerland
Eaton.eu

La collecte, le traitement et le recyclage des DEEE Pro et accumulateurs incorporés, de Cooper Sécurité SAS (Groupe EATON), sont assurés gratuitement par Récyllum. Plus d'informations sur : www.recyllum.com



EATON

Powering Business Worldwide

Eaton
Cooper Sécurité SAS
PEE II - Rue Beethoven - BP10184
63204 RIOM CEDEX FRANCE
Tél. +33 (0)825 826 212 (0,15 € TTC/min)
www.cooperfrance.com
www.eaton.com

© 2016 Eaton
ZNO2035100 A - 12/2016
Tous droits réservés

