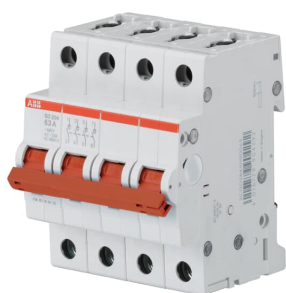


PRODUCT-DETAILS

# SD204/63

## SD204/63 Switch Disconnecter



### Informations générales

Extension du type de produit	SD204/63
Code de produit	2CDD284101R0063
EAN	4016779904292
Description courte	SD204/63 Switch Disconnecter
Description longue	SD204/63 - Switch Disconnecter - 4P, 63A

### Technique

Normes et standards	IEC/EN 60947-3
Tension nominale ( $U_r$ )	440 V 12 V Minimum
Tension	440 V AC
Operational Voltage	Maximum 462 V AC Minimum 12 V AC
Tension assignée de tenue aux chocs ( $U_{imp}$ )	4 kV at 2000 m 5 kV at Sea Level 6.2 kV
Type de tension	AC
Courant nominal ( $I_n$ )	63 A
Rated Conditional Short-	25 kA

Circuit Current ( $I_{nc}$ )	
Fréquence assignée (f)	50 / 60 Hz
Power Loss	at Rated Operating Conditions per Pole 4.5 W
Contact Position Indication	ON / OFF
Electrical Endurance	10000 AC cycle
Mechanical Endurance	20000 cycle
Number of Contacts CO	0
Number of Contacts NC	0
Number of Contacts NO	4
Nombre de pôles	4
Catégorie de Surtension	III
Couple de serrage	2.8 N·m
Utilization Category	Switching of motor loads or other highly inductive loads - frequent actuation (AC-23A)
Actuator Type	Toggle
Screw Terminal Type	Failsafe Bi-directional Cylinder-lift Terminal
Switch Type	Off
Actuator Marking	I / O
Actuator Material	Insulation Group II, Red, Sealable
Qualité du matériau	Insulation Group I, RAL 7035
Type d'encastrement	any
Recommended Screw Driver	Pozidriv 2
Accessories Available	Oui
Cover Color	Grey
Connecting Capacity	Busbar 10 / 10 mm <sup>2</sup> Flexible 0.75 ... 16 mm <sup>2</sup> Rigid 0.75 ... 25 mm <sup>2</sup> Stranded 0.75 ... 25 mm <sup>2</sup>
Type de borne	Screw Terminals

## Environnement

Température de l'air ambiant	Operation -25 ... +55 °C Storage -40 ... +70 °C
Indice de protection	IP20 Enclosure with Cover IP40
Degré de pollution	3
Environmental Conditions	28 cycles with 55 °C / 90-96 % and 25 °C / 95-100 %
Resistance to Vibrations acc. to IEC 60068-2-6	5g, 20 cycles at 5 ... 150 ... 5 Hz with load 0.8 In
Résistance aux chocs selon CEI 60068-2-27	25g 2 shocks 13 ms
Statut RoHS	Following EU Directive 2011/65/EU and Amendment 2015/863 July 22, 2019
Informations RoHS	2CDK440034D2703
REACH Declaration	9AKK107492A1906
Informations	2CDK400618D0201

## environnementales

Conflict Minerals  
Reporting Template  
(CMRT)

9AKK108468A3363

---

**Dimensions**

Width in Number of Modular Spacings	4
Produit Largeur Net	70 mm
Produit Hauteur Net	88 mm
Produit Longueur Net	69 mm
Poids net	0.34 kg
Profondeur d'encastrement (t <sub>2</sub> )	69 mm

---

**Commande**

Emballage Niveau 1 Unités	1 pièce
Emballage Niveau 1 Poids	0.36 kg
E-Number (Finland)	3601648

---

**Certificats et Déclarations (Numéro de document)**

Agence de certification	IEC EN
Déclaration de Conformité - CE	2CDK440034D2703

---

**Installation**

Instructions et manuels	2CDC441015D0201
-------------------------	-----------------

---

**Downloads Préférés**

Fiche produit, informations techniques	2CDC441015D0201
--	-----------------

---

**Classifications**

ETIM 8	EC001545 - Main switch for distribution board
ETIM 9	EC001545 - Main switch for distribution board
Catégorie DEEE	5. Small Equipment (No External Dimension More Than 50 cm)
WEEE B2C / B2B	Business To Consumer
CN8	8536 90 95
eClass	V11.0 : 27142301
Code de classification	Q

d'objet

---

**Accessories**


---

Identifier	Description	Type	Quantity	Unit Of Measure
2CDS200922R0001	S2C-S/H6R Signal / Auxiliary Contact	S2C-S/H6R	1	piece
2CDS200912R0001	S2C-H6R Auxiliary Contact	S2C-H6R	1	piece
2CDS200970R0001	S2C-H01 Auxiliary Contact	S2C-H01	1	piece
2CDS200970R0002	S2C-H10 Auxiliary Contact	S2C-H10	1	piece
2CDS200936R0001	S2C-H11L Auxiliary Contact	S2C-H11L	1	piece
2CDS200936R0002	S2C-H20L Auxiliary Contact	S2C-H20L	1	piece
2CDS200936R0003	S2C-H02L Auxiliary Contact	S2C-H02L	1	piece
2CDS200946R0001	S2C-H6-11R Auxiliary Contact	S2C-H6-11R	1	piece
2CDS200946R0002	S2C-H6-20R Auxiliary Contact	S2C-H6-20R	1	piece
2CDS200946R0003	S2C-H6-02R Auxiliary Contact	S2C-H6-02R	1	piece
2CDS200909R0001	S2C-A1 Shunt Trip	S2C-A1	1	piece
2CDS200909R0002	S2C-A2 Shunt Trip	S2C-A2	1	piece
2CSS200911R0001	S2C-UA 12 DC Undervoltage Release	S2C-UA 12 DC	1	piece
2CSS200911R0002	S2C-UA 24 AC Undervoltage Release	S2C-UA 24 AC	1	piece
2CSS200911R0003	S2C-UA 48 AC Undervoltage Release	S2C-UA 48 AC	1	piece
2CSS200911R0004	S2C-UA 110 AC Undervoltage Release	S2C-UA 110 AC	1	piece
2CSS200911R0005	S2C-UA 230 AC Undervoltage Release	S2C-UA 230 AC	1	piece
2CSS200911R0006	S2C-UA 400 AC Undervoltage Release	S2C-UA 400 AC	1	piece
2CSS200911R0007	S2C-UA 24 DC Undervoltage Release	S2C-UA 24 DC	1	piece
2CSS200911R0008	S2C-UA 48 DC Undervoltage Release	S2C-UA 48 DC	1	piece
2CSS200911R0009	S2C-UA 110 DC Undervoltage Release	S2C-UA 110 DC	1	piece
2CSS200911R0010	S2C-UA 230 DC Undervoltage Release	S2C-UA 230 DC	1	piece
2CSS201997R0013	S2C-CM1 Motor operating device	S2C-CM1	1	piece
2CSS203997R0013	S2C-CM2/3 Motor operating device	S2C-CM2/3	1	piece
2CSS204997R0013	S2C-CM4 Motor operating device	S2C-CM4	1	piece
GHS2001901R0003	S2C-DH Mechanical Accessories	S2C-DH	1	piece
2CSS200998R0001	S2C-BP Mechanical tripping device	S2C-BP	1	piece
2CSS200999R0001	S2C-EST Plug-in base	S2C-EST	1	piece
2CDS200918R0001	S2C-NT Hand Operated Neutral	S2C-NT	1	piece
2CCA880100R0001	CMS-100PS Sensor	CMS-100PS	1	piece
2CCA880101R0001	CMS-101PS Sensor	CMS-101PS	1	piece
2CCA880102R0001	CMS-102PS Sensor	CMS-102PS	1	piece

---

## Catégories

---

Produits basse tension → Appareillage modulaire et parafoudres → Command and Signalling Devices → Switch Disconnectors

Produits et Systèmes Moyenne Tension → Service → Pièces détachées → Parts → All Spare Parts (Relays-SWG-CB)

