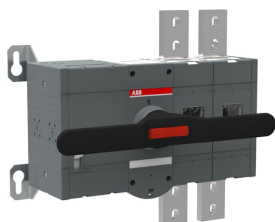


PRODUCT-DETAILS

# OTM1600E3M230C

## OTM1600E3M230C MOTORIZED SWITCH



### Informations générales

Extension du type de produit	OTM1600E3M230C
Code de produit	1SCA115366R1001
EAN	6417019477367
Description courte	OTM1600E3M230C MOTORIZED SWITCH
Description longue	3-pole, motor operated, base mounted switch-d disconnecter with handle for manual operation, terminal bolt kit, handle and spare fuse storage clip and male connector for control circuit

### Valeur Circulaire

Conflict Minerals Reporting Template (CMRT)	9AKK108467A5658
Environmental Product Declaration - EPD	1SCC303101D0201
REACH Declaration	1SCC011021D0201
Informations RoHS	1SCC011020D0201
Toxic Substances Control Act - TSCA	1SCC011025D0201

### Eco Transparence

Environmental Product Declaration - EPD	1SCC303101D0201
---	-----------------

---

**Commande**


---

Quantité minimum	1 pièce
Code douanier	85365080
Pays d'origine	Finland (FI)

---



---

**Downloads Préférés**


---

Fiche produit, informations techniques	1SCC301020C0201
Instructions et manuels	1SCC303006M0205
Environmental Product Declaration - EPD	1SCC303101D0201

---



---

**Dimensions**


---

Produit Largeur Net	506.5 mm
Produit Hauteur Net	372 mm
Produit Longueur Net	153 mm
Poids net	26 kg

---



---

**Technique**


---

Rated Operational Current AC-21A ( $I_e$ )	(380 ... 415 V) 1600 A (500 V) 1600 A (690 V) 1600 A (1000 V AC) 1600 A
Rated Operational Current AC-22A ( $I_e$ )	(380 ... 415 V) 1600 A (500 V) 1600 A (690 V) 1600 A
Rated Operational Current AC-23A ( $I_e$ )	(380 ... 415 V) 1250 A (500 V) 1250 A (690 V) 1250 A
Rated Operational Power AC-23A ( $P_e$ )	(400 ... 415 V) 710 kW (500 V) 900 kW (690 V) 1200 kW
Courant thermique conventionnel à l'air libre ( $I_{th}$ )	$\Theta = 40$ °C 1600 A
Conventional Thermal Current ( $I_{the}$ )	Fully Enclosed 1600 A
Tension assignée de tenue aux chocs ( $U_{imp}$ )	12 kV
Tension assignée d'isolement ( $U_i$ )	acc. to IEC/EN 60664-1 1000 V
Tension	Circuit principal 1000 V
Rated Short-Circuit Making Capacity ( $I_{cm}$ )	(690 V) 110 kA
Courant assigné de courte durée admissible ( $I_{cw}$ )	for 1 s 50 kA
Rated Conditional Short-Circuit Current ( $I_{nc}$ )	(1250 A fuse, 415 V) 80 kA (1250 A fuse, 500 V) 100 kA
Motor Operational Voltage	220 ... 240 V AC
Power Loss	at Rated Operating Conditions per Pole 48 W
Degré de pollution	3

---

Handle Color	Black
Handle Type	Direct mounted handle
Switches Operating Mechanism	Mechanism at the End of the Switch
Distance Between Phases	Standard
Position of Line Terminals	Top In - Bottom Out
Mode de fonctionnement	Front operated
Normes et standards	IEC 60947-3
Fonctions spéciales	No
Type de montage	Base mounting
Nombre de pôles	3
Indice de protection	Front IP00
Type de borne	Lug terminals
Couple de serrage	acc. IEC 60947-1 50 ... 75 N·m
Durabilite mecanique	6000
Lock Type	Yes

### Technique UL/CSA

Couple de serrage	acc. IEC 60947-1 50 ... 75 N·m
-------------------	--------------------------------

### Environnement

Statut RoHS	Following EU Directive 2011/65/EU and Amendment 2015/863 July 22, 2019
Toxic Substances Control Act - TSCA	1SCC011025D0201

### Certificats et Déclarations (Numéro de document)

Certificat ATEX	No certification needed
Déclaration de Conformité - CE	1SCC301213D2702
REACH Declaration	1SCC011021D0201
Certificat UL	No certification needed
VDE Certificate	No certification needed

### Emballage

Emballage Niveau 1 Unités	box 1 pièce
Emballage Niveau 1 Largeur	407 mm 16.02 in
Emballage Niveau 1 Longueur	619 mm 24.37 in
Emballage Niveau 1 Hauteur	190 mm 7.48 in
Emballage Niveau 1 Poids	28 kg 13 lb
Emballage Niveau 1 EAN	6417019477367

### Classifications

Code de classification d'objet	Q
ETIM 7	EC000216 - Switch disconnecter
ETIM 8	EC000216 - Switch disconnecter
ETIM 9	EC000216 - Switch disconnecter (low voltage)
eClass	V11.1 : 27371403
Catégorie DEEE	4. Large Equipment (Any External Dimension More Than 50 cm)

---

## Catégories

---

Produits basse tension → Interrupteurs → Motorized Switch-Disconnectors

