
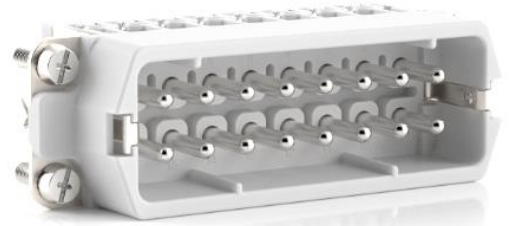


10540100	<b>DATA SHEET</b>	
Valid from: 18.09.2020	<b>EPIC® H-A 48 SS / H-A 48 BS DR</b>	

## Description

- H-A inserts with screw termination up to 2.5 mm<sup>2</sup> wire cross section.
- Slim connector insert for standard application.
- Easy to service screw connection.
- Universal for current and voltage transmission.



## General Characteristics

Series	H-A 48
Version	Male/Female (Article 10541100)
Wire Protection	Yes
Number of Contacts	48 + 3 PE
Termination Methods	Screw termination: 0.5 - 2.5 mm <sup>2</sup> (2.5 mm <sup>2</sup> with conductor end sleeves depending on the crimping profile)
Protection (DIN EN 60529)	IP 65, latched to the housing
Protection (NEMA 250, UL50E)	4, 12, latched to the housing
Temperature Range	-40°C to +100°C, short-term up to +125°C

## Mechanical Characteristics

Cycle of mechanical operation	100
-------------------------------	-----

## Electrical Characteristics

Rated Voltage, IEC	400 V
Rated Voltage, UL	600 V
Rated Voltage, CSA	600 V
Rated Impulse Voltage	4 kV
Rated Current, IEC	16 A
Rated Current, UL	14 A
Rated Current, CSA	16 A
Contact Resistance	1,5 - 4 mOhm
Degree of Soiling	3


## Materials and Surfaces

Contacts	Copper alloy, hard silver-plated
Insulating Body	PBT
Flammability Class according to UL 94	V0

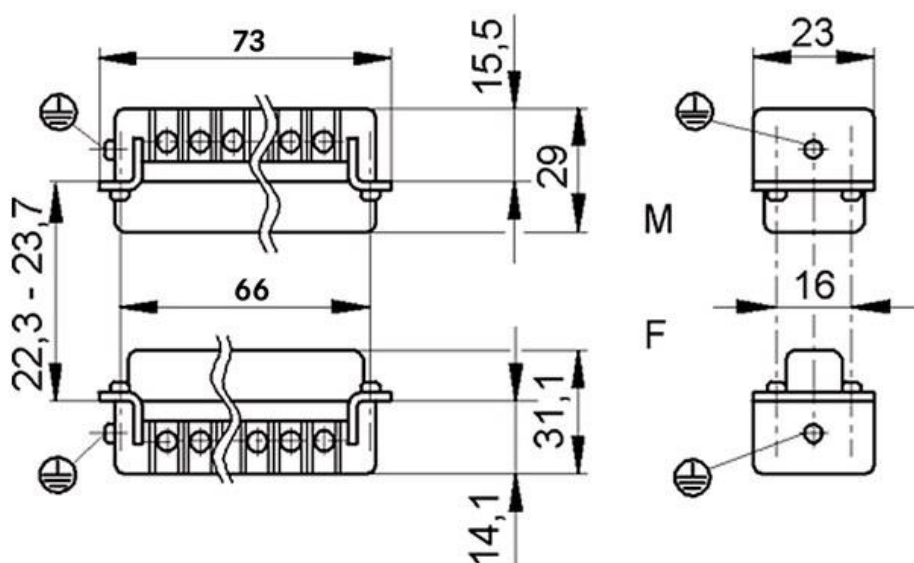
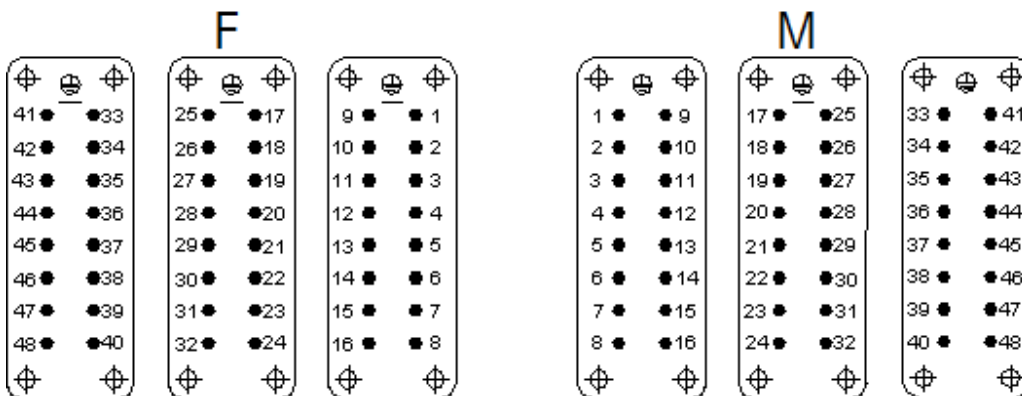
## Standard


Safety Standard	IEC 61984, UL 1977, CSA-C22.2 182.3
-----------------	-------------------------------------

Creator: STKU3/PDP	Document: DB10540100EN	Page 1 of 3
Released: IVSE1/PDP	Version: 02	

10540100	<b>DATA SHEET</b>	
Valid from: 18.09.2020	EPIC® H-A 48 SS / H-A 48 BS DR	

### Technical Drawings



10540100	<b>DATA SHEET</b>	
Valid from: 18.09.2020	<b>EPIC® H-A 48 SS / H-A 48 BS DR</b>	



Industrial machinery and plant engineering



Assembly time



Space requirement

**Info**

Slim standard insert, easy to connect by screw  
 Universal for current and voltage transmission

**Application range**

Machine and equipment manufacturings  
 Control engineering

**Remark**

Photographs are not to scale and do not represent detailed images of the respective products.

Creator: STKU3/PDP Released: IVSE1/PDP	Document: DB10540100EN Version: 02	Page 3 of 3
---	---------------------------------------	-------------