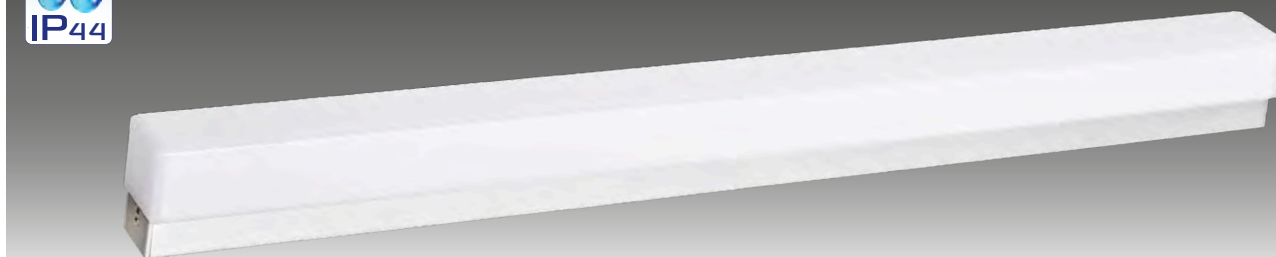


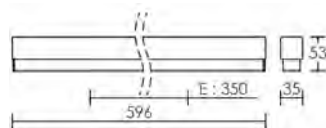
## KATE



600 lm



Raccordement central.



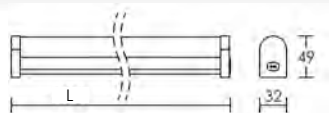
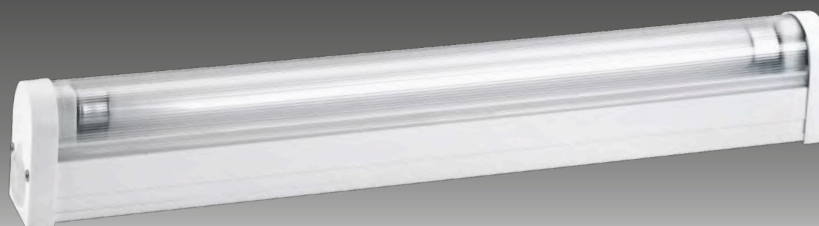
Corps aluminium anodisé/Diffuseur polycarbonate opale. **Autorisé volume 2.**



230V IP44 IK02 650°C 30 000 h

P (W)	L (mm)	Lumens	Code
<b>N</b> 7	596	600	<b>53051</b>

## HALOLITE IP44



Corps aluminium/Vasque polycarbonate. Sans cordon. Ballast électronique. Montage individuel seulement. **Autorisé volume 2.**

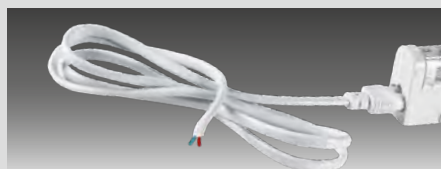
T 16 (FDH) Ø16 G5

230V IP44 IK02 850°C

P (W)	L (mm)	Teinte	Code avec tube
8	330	○ 6500 K	<b>3310</b>
13	560	○ 6500 K	<b>3311</b>
21	875	○ 6500 K	<b>3312</b>
28	1175	○ 6500 K	<b>3313</b>

L'utilisation sur minuterie diminue considérablement la durée de vie des lampes.

### CORDON DE RACCORDEMENT



Longueur 1,5 m, à commander séparément.

Code  
**2171**