

# MAH511

# STÄUBLI



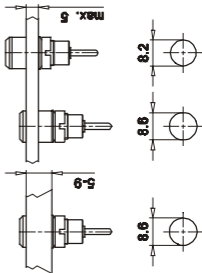
**MLB1,5-R**  
65.3300-\*



**SLB2-R**  
65.9194-\*

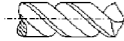


**SLB2-F2,8**  
65.9098-\*

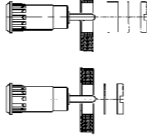


Typ/Type  
Best.-Nr.  
Order No.  
No. de Cde

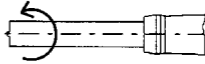
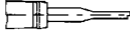
- \* Farbcode gemäss Katalog
- \* Colour code see catalogue
- \* Code couleurs voir catalogue



**MLB1,5-R**  
**SLB2-R**  
**SLB2-F2,8**



**SS2-S**  
**25.0023**



**SS4**  
**25.0021**

Anzugsdrehmoment  
Tightening torque  
Couple de serrage:  
≤ 30 Ncm