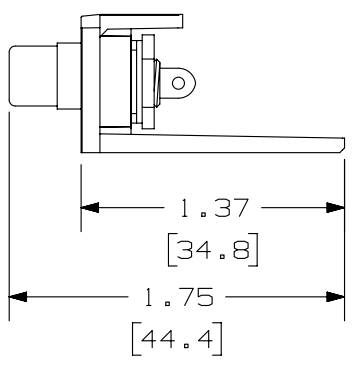
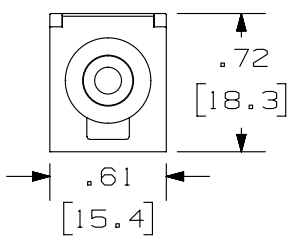
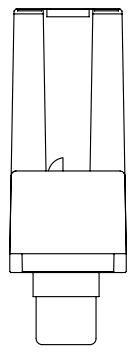


2

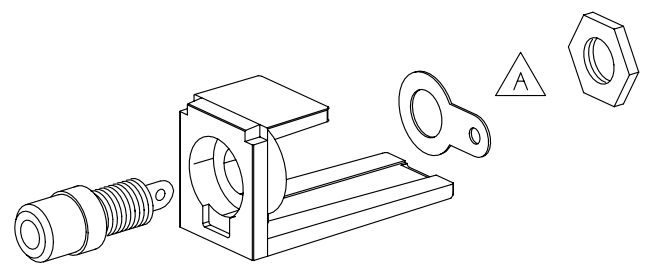
1

THIS COPY IS PROVIDED ON A RESTRICTED BASIS AND IS NOT TO BE USED IN ANY WAY DETRIMENTAL TO THE INTERESTS OF PANDUIT CORP.



PANDUIT P/N	WEIGHT
CMRCAR**Y	.06 LB/10 PCS (25.9 G/10 PCS)
CMRCAW**Y	
CMRCAY**Y	

- NOTES:
1. SEE CURRENT CATALOG FOR ADDITIONAL PART NUMBER SUFFIXES TO INDICATE COLOR AND OR PACKAGE QUANTITY.
 2. SEE CATALOG FOR COMPLETE LIST OF PARTS APPLICABLE FOR USE WITH THIS PART.
 3. DIMENSIONS IN [] ARE IN METRIC.
 4. PART INCLUDES:
 - 1- MODULE BASE
 - 1- RCA CONNECTOR
 - 1- GROUNDING RING
 - 1- HEX NUT



PART NUMBER	SEE TABLE	PRODUCT SPEC/PKG SPEC	N/A
D.I. NUMBER	N/A	WORK INSTRUCTION	N/A

TITLE
MINI-COM RCA SOLDER TYPE MODULE
 CUSTOMER DRAWING

ITEM REVISION NAME
M02479HB/00

DATASET FILE NAME
M02479HB_DC186/00B

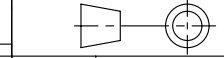


UNLESS OTHERWISE SPECIFIED,
 DIMENSIONAL TOLERANCES ARE: IN [mm]

.x ± .1 [2.54] .xxx ± .005 [.127]
 .xx ± .01 [.25] ANGLES ± 5 °

MATERIAL:
ABS

DRAWING NUMBER:
02479-186



DRAWN BY	DATE	CHK	SCALE	SHT 1 OF 1	SIZE
JSP	8-9-06	MJD	NONE		A

REV	DATE	BY	CHK	APR	DESCRIPTION	ECN
1	12-2-13	BJN	JSP	MMR	A. REMOVED LOCK WASHER FROM MODULE	02479-186
R	8-9-06	JSP	MJD	MJD	RELEASED TO PRODUCTION	02479-186

2

1

D10100DA/14