



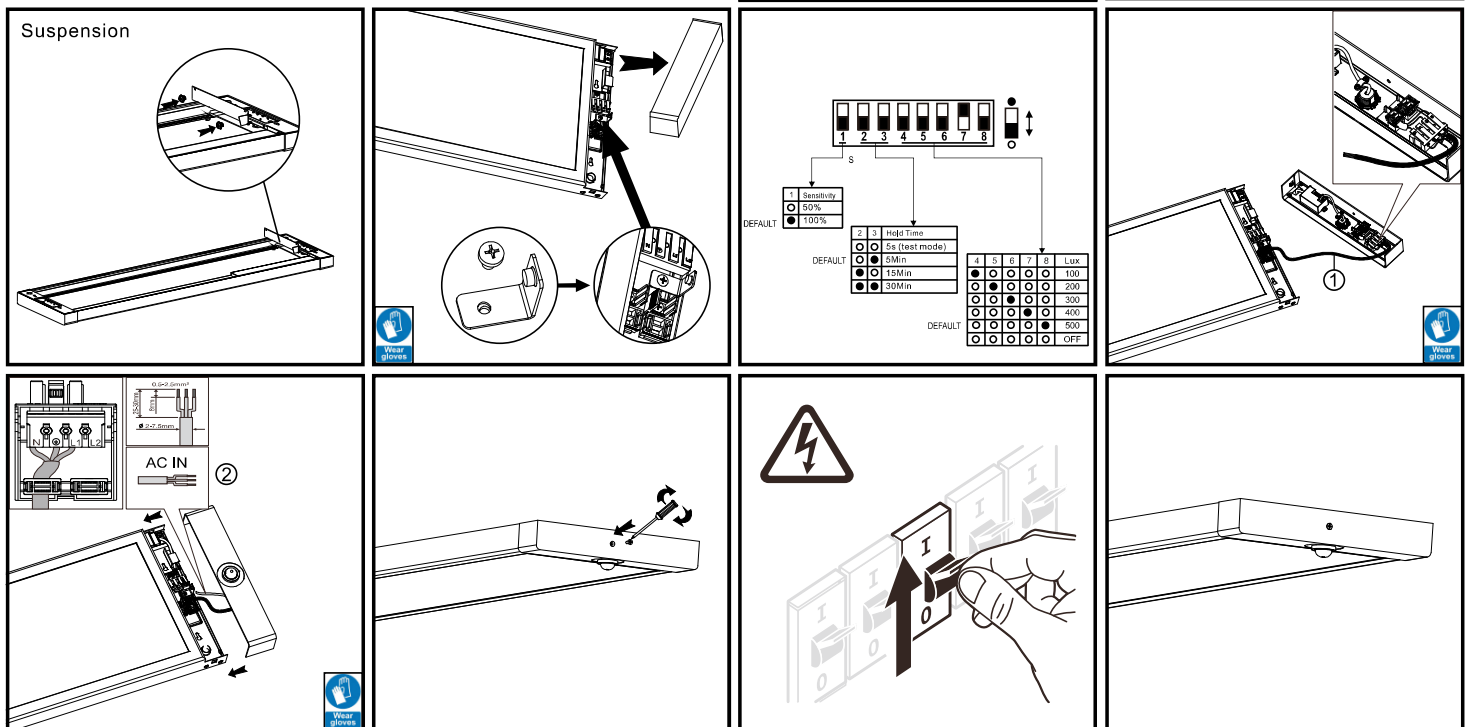
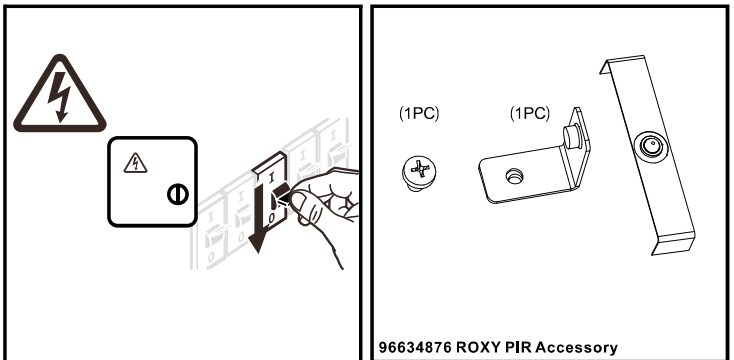
EN Installation Instructions
 DE Montageanleitung
 CZ Montážní návod
 DK Monteringsvejledning
 EE Paigaldusjuhend
 FI Asennusohje
 FR Notice de montage
 HU Szerelési útmutató
 HR Uputstvo za montažu
 NL Montagehandleiding
 RO Instructiuni de montaj

IT Istruzioni di montaggio
 LT Montavimo Instrukcijos
 LV Instalācijas instrukcija
 NO Monteringsanvisning
 PL Instrukcja montażu
 SE Installationsanvisning
 RU Инструкция по монтажу
 SRB Instrukcija za instalaciju
 SK Montážny návod
 SLO Navodilo za montažo
 CN 安装说明书

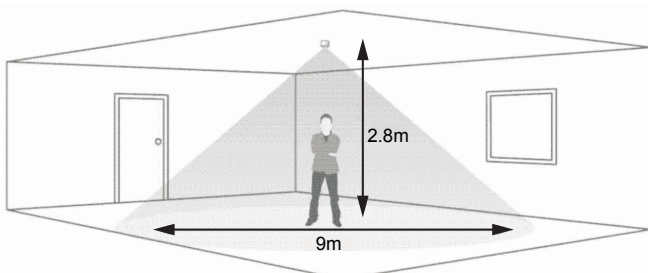
-  1. Installation and commissioning may only be carried out by authorized specialists and wired in accordance with the latest IEE electrical regulations or the national standards.
2. Mains power must be switched off before carrying out installation.
3. The manufacturer, shall not be liable for any damage resulting from inappropriate modifications to the luminaire or faulty installation.
-  4. Indoor use only.
5. Caution, risk of electric shock. The control gear provides basic insulation between the LV supply and the control circuit

Thorn Lighting Limited,
 Durhamgate, Spennymore,
 Co Durham, DL16 6HL, UK

Zumtobel Lighting GmbH,
 Schweizerstrasse 30,
 6850 Dornbirn, Austria
 URL: www.thorn-eco.com



SENSOR COVERAGE



Note: illustration shows an average of the walk across and walk towards figures below

Height	Range Diameter
2.8m	9m

Area of high sensitivity  Area of lower sensitivity 