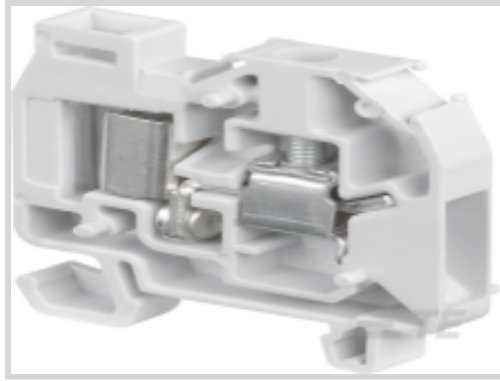


1SNA199275R0300 ✓ ACTIVE

TE Internal #: 1SNA199275R0300

TE Internal Description: DR4/6.ADO

[View on TE.com >](#)



Product Compliance

[For compliance documentation, visit the product page on TE.com>](#)

EU RoHS Directive 2011/65/EU	Compliant
EU ELV Directive 2000/53/EC	Compliant
China RoHS 2 Directive MIIT Order No 32, 2016	No Restricted Materials Above Threshold
EU REACH Regulation (EC) No. 1907/2006	Current ECHA Candidate List: JUNE 2022 (224) Candidate List Declared Against: JUNE 2022 (224) Does not contain REACH SVHC
Halogen Content	Low Halogen - Br, Cl, F, I < 900 ppm per homogenous material. Also BFR/CFR/PVC Free
Solder Process Capability	Not reviewed for solder process capability

Product Compliance Disclaimer

This information is provided based on reasonable inquiry of our suppliers and represents our current actual knowledge based on the information they provided. This information is subject to change. The part numbers that TE has identified as EU RoHS compliant have a maximum concentration of 0.1% by weight in homogenous materials for lead, hexavalent chromium, mercury, PBB, PBDE, DBP, BBP, DEHP, DIBP, and 0.01% for cadmium, or qualify for an exemption to these limits as defined in the Annexes of Directive 2011/65/EU (RoHS2). Finished electrical and electronic equipment products will be CE marked as required by Directive 2011/65/EU. Components may not be CE marked. Additionally, the part numbers that TE has identified as EU ELV compliant have a maximum concentration of 0.1% by weight in homogenous materials for lead, hexavalent chromium, and mercury, and 0.01% for cadmium, or qualify for an exemption to these limits as defined in the Annexes of Directive 2000/53/EC (ELV). Regarding the REACH Regulation, the information TE provides on SVHC in articles for this part number is based on the latest European Chemicals Agency (ECHA) 'Guidance on requirements for substances in articles' posted at this URL: <https://echa.europa.eu/guidance-documents/guidance-on-reach>

Compatible Parts

TE Part # 1SNA113546R1400
PC6-2

TE Part # 1SNA113548R2600
PC6-10

TE Part # 1SNA116536R0500
PC6-3

TE Part # 1SNA116537R0600
PC6-4

TE Part # 1SNA173059R0300
DCJ

TE Part # 1SNA199420R2100
BADRL

TE Part # 1SNA199421R1600
FEAD1

TE Part # 1SNA232000R0000
RC65

TE Part # 1SNA007865R2600
FC2

TE Part # 1SNA113550R2400
EIP

TE Part # 1SNA114205R2000
AD2.5

TE Part # 1SNA178944R0400
OUPAD

TE Part # 1SNA179466R0600
OUMAD

TE Part # 1SNA205284R0300
OUTA

TE Part # 1SNA150046R0000
TH15-5.5-2METER

TE Part # 1SNA150047R0000
TH15-5.5-P4-1METER

TE Part # 1SNA205721R0000
EXAD2

TE Part # 1SNA205974R0600
BJADO6-2

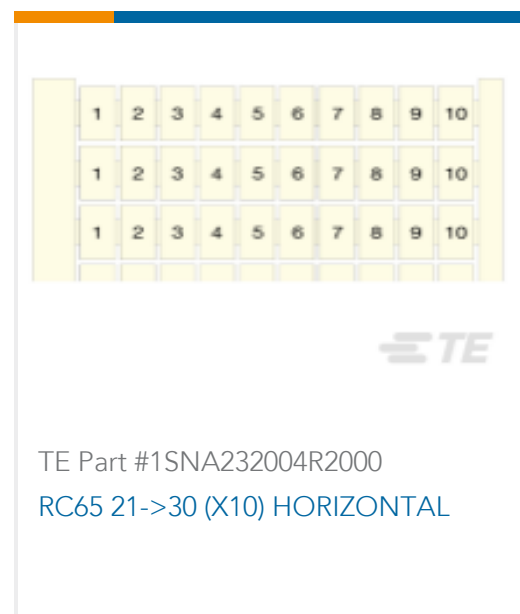
TE Part # 1SNA205975R0700
BJADO6-3

TE Part # 1SNA205976R0000
BJADO6-4

Customers Also Bought



TE Part #1SNA199421R1600
FEAD1



TE Part #1SNA232004R2000
RC65 21->30 (X10) HORIZONTAL



TE Part #1SNA233115R1400
RC610 GROUND SYMBOL (X100)
HORIZONTAL



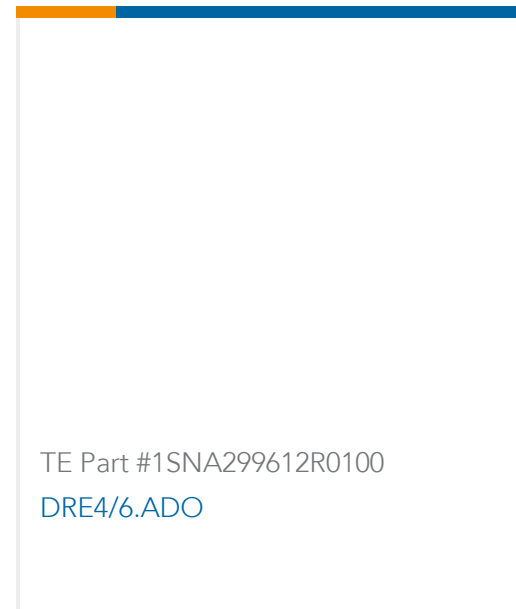
TE Part #1SNA199276R0400
DR4/6.ADO



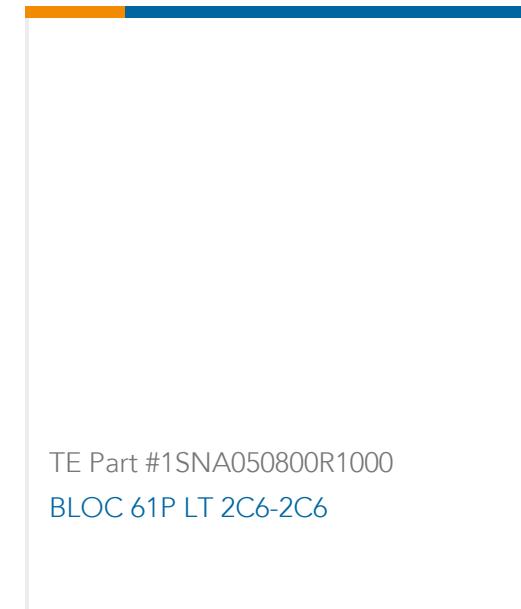
TE Part #1SNA299505R0700
DB4/6.ADO



TE Part #1SNA299552R0500
DRE4/6.ADO



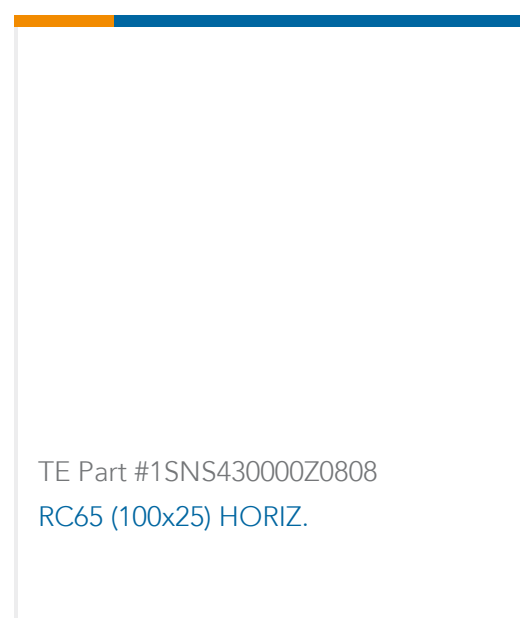
TE Part #1SNA299612R0100
DRE4/6.ADO



TE Part #1SNA050800R1000
BLOC 61P LT 2C6-2C6



TE Part #1SNA146200R1700
DR4/6.1.EX



TE Part #1SNS430000Z0808
RC65 (100x25) HORIZ.

Documents

CAD Files

3D PDF

3D

Customer View Model

[ENG_CVM_CVM_1SNA199275R0300_A.2d_dxf.zip](#)

English

Customer View Model

[ENG_CVM_CVM_1SNA199275R0300_A.3d_igs.zip](#)

English

Customer View Model

[ENG_CVM_CVM_1SNA199275R0300_A.3d_stp.zip](#)

English

By downloading the CAD file I accept and agree to the [Terms and Conditions](#) of use.

Datasheets & Catalog Pages

DR4/6.ADO

English

ENTRELEC Terminal Block - Master Catalog

English



ENTRELEC Terminal Blocks Catalogue (RUS)