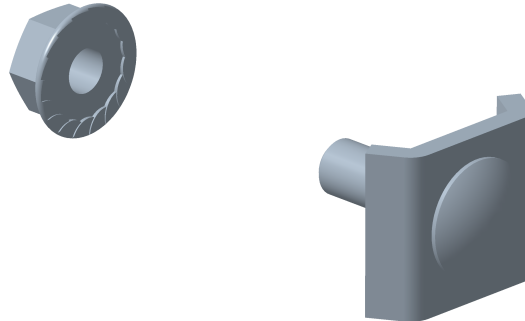


KIT FIXVS

Reference(s) : 558 061/067 - 350 428


1. GAMME / RANGE

Designation	Code	Poids / Weight (Kg) (lb)		Composant	Composant	Matière / Material	Classe / Class	Norme / Standard	Finition / Coating	Classe de résistance contre la corrosion/ Resistance class against corrosion		
KITFIXVS EZ	558 061	0.018	0.040	CE25VS EZ	CE25VS EZ	S 235 JR	-	EN 10 025	EZ	Class 3 / IEC 61537		
					TRCC 6x20 EZ	-	4.8	ISO 898-1				
				EEC M6 EZ		-	8	ISO 898-2				
KITFIXVS ZnL	558 067			0.018	0.040	CE25ES ZnL	CE25ES ZnL	S 235 JR	-	EN 10 025	ZnL	Class 6 / IEC 61537
							TRCC 6x20 ZnL	-	4.8	ISO 898-1		
						EEC M6 ZnL		-	8	ISO 898-2		
KITFIXVS ZnMg	350 428	0.018	0.040			CE30VS ZnMg	CE25 ZnMg	DX51D ZM	-	EN 10 346	ZnMg	Class 8 / IEC 61537
							TRCC 6x20 ZnNi	-	4.8	ISO 898-1		
						EEC M6 ZnNi		-	8	ISO 898-2		

2. DIMENSIONS (mm/inch)
