



### Mini-Com® High Density Modular Patch Panels

- Accept Mini-Com® Modules for UTP, fiber optic, and audio/video, which snap in and out for easy moves, adds, and changes
- Conserve valuable rack space, but may be limited to specific modules (UTP)
- Pre-printed numbers above each port for easy identification
- Mount to standard EIA 19" racks or 23" racks with optional extender brackets
- Angled patch panels facilitate proper bend radius control and minimize the need for horizontal cable managers
- Enhanced label version of 48-port high density patch panels only accept UTP modules



CPPA48HDWBL



CPPA72FMWBL



CPP48HDWBL



CPPA48HDVNSWBL



CPP72FMWBL



CPP48HDEWBL



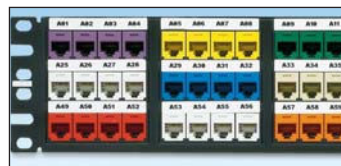
CPP48HDVNSWBL

Part Number	Part Description	No. of Rack Spaces <sup>^</sup>	Std. Pkg. Qty.	Std. Ctn. Qty.
<b>Mini-Com® Angled High Density Modular Patch Panels</b>				
<b>CPPA48HDWBL</b>	48-port angled high density patch panel supplied with rear mounted faceplates (space not available for component labels).	1	1	10
<b>CPPA72FMWBL</b>	72-port angled high density flush mount patch panel supplied with rear mounted faceplates.	2	1	10
<b>CPPA48HDEWBL</b>	48-port high density angled patch panel with enhanced labeling features and compatibility with Panduit hand-held printers. (Only accepts Mini-Com® Modules for UTP applications).	1	1	10
<b>CPPA48HDVNSWBL</b>	48-port high density angled patch panel with vertical numbering sequence from top to bottom across panel.	1	1	10

<b>Mini-Com® High Density Modular Patch Panels</b>				
<b>CPP48HDWBL</b>	48-port high density patch panel supplied with rear mounted faceplates (space not available for component labels).	1	1	10
<b>CPP72FMWBL</b>	72-port high density flush mount patch panel supplied with rear mounted faceplates.	2	1	10
<b>CPP48HDEWBL</b>	48-port high density patch panel with enhanced labeling features and compatibility with Panduit hand-held printers. (Only accepts Mini-Com® Modules for UTP applications).	1	1	10
<b>CPP48HDVNSWBL</b>	48-port high density patch panel with vertical numbering sequence from top to bottom across panel.	1	1	10

<sup>^</sup>One rack space = 1.75" (44.45mm).  
M6 and #12-24 mounting screws included.

### Component Labels for Mini-Com® High Density Modular Patch Panels



Suggested Label Solutions for TIA/EIA-606-A Compliance				
Patch Panel Part Number	Laser/Ink Jet Desktop Printer Label	TDP43ME Thermal Transfer Desktop Printer Label	PanTher™ LS8E Hand-Held Printer Label	Cougar™ LS9 Hand-Held Printer Label
CPPA72FMWBL CPP72FMWBL	C261X030FJJ	C261X030YPT	C261X030FJC	T031X000FJC-BK

48-port high density patch panel layout does not allow space for component labels.  
For complete labeling solutions and product information, reference charts on pages O.1 – O.22 of SA-NCCB51.