


22260006	DATA SHEET	
Valid from: 17.09.2018	AB-B4-M12-8-C	

Description

- Sensor/actuator box
- Connection methods: M12-jack, A-standard and pluggable plug-in connector for trunk cable
- slots: 4



General characteristics

Connection method, trunk cable	pluggable plug-in connector 180°
Connection method, sensor / actuator	M12-jack, A-standard
Number of slots	4
Number of poles	5
Degree of protection	IP65 / IP67 / IP69K
Temperature range	-30 °C to +80 °C (-22 °F to +176 °F)


Electrical properties

Nominal voltage U_N	120 V
Current carrying capacity per path	2 A
Total current (w/o potential separation)	1x10 A
Total rated current (with potential separation)	2x8 A

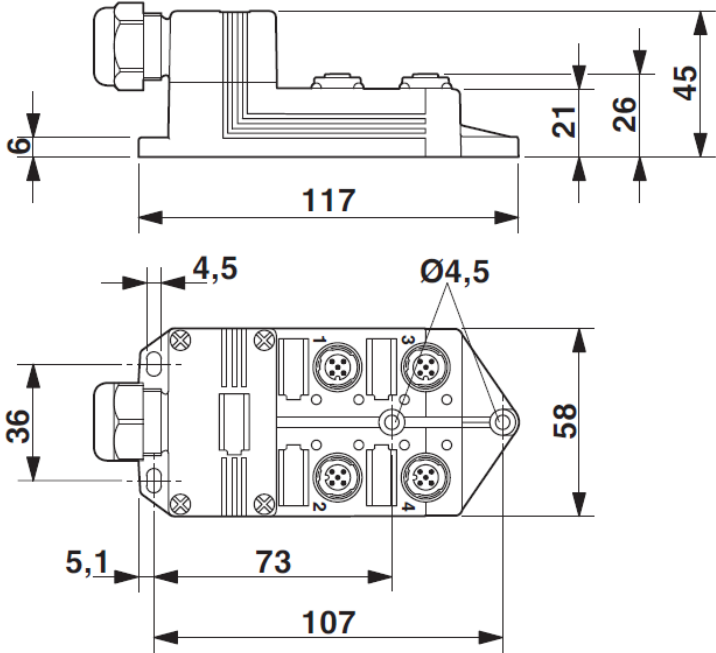
Mechanical properties

Inflammability class acc. to UL 94	V0
Material, housing	PBT
Material, potting	PUR
Material, contact	Cu-alloy
Material, contact surface	Gold-plated
Material, contact carrier	PA
Material of threaded sleeve	Zinc die-cast
Material of threaded sleeve surface	Nickel-plated
Material, O-ring	NBR
Trunk cable, Termination cross section	AWG16 to AWG26
Trunk cable, Outer diameter, cable	7 mm to 12 mm
Tightening torque screw cover plate	0.35 Nm
Tightening torque screw nut coupler	2.5 Nm
Tightening torque slot s/a cable	0.4 Nm

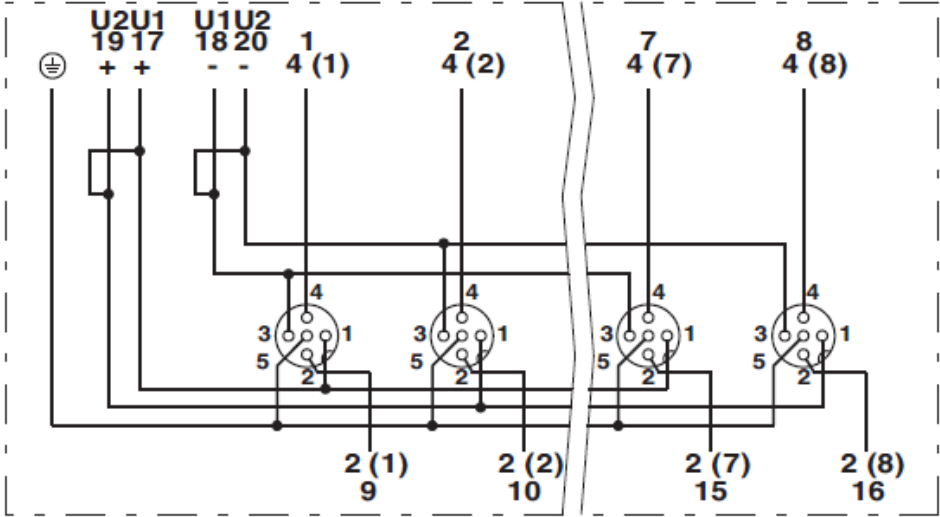
Creator: FELI1/PDP Released: IVSE1/PDP	Document: DB22260006DE Version: 06	Page 1 of 3
---	---------------------------------------	-------------

22260006	DATA SHEET	
Valid from: 17.09.2018	AB-B4-M12-8-C	

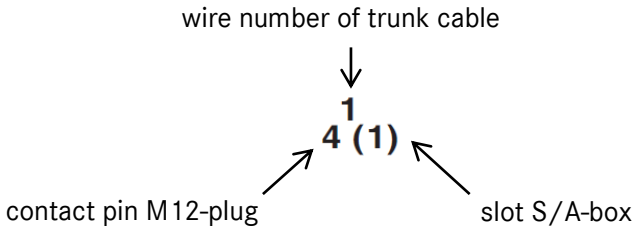
Technical drawing



Circuit diagram

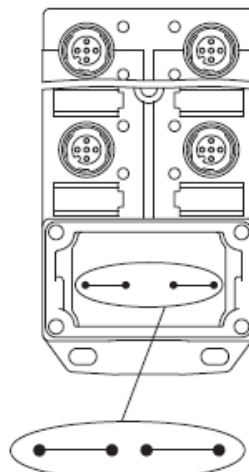
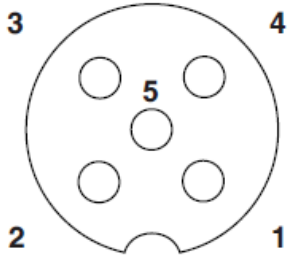


Example:

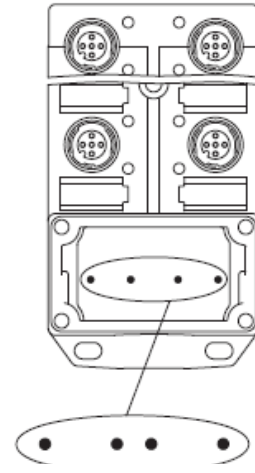


Creator: FELI1/PDP Released: IVSE1/PDP	Document: DB22260006DE Version: 06	Page 2 of 3
---	---------------------------------------	-------------

Schema drawings



Potential U_{N1} and U_{N2} joint.
Potential order:
 $U_{N1} = U_{N2} = \text{slots } 1,2,3,4$



Potential separated. Potential order:
 $U_{N1} = \text{slots } 1, 3$ and
 $U_{N2} = \text{slots } 2, 4$

Pin assignment

Slot/ position = Wire colour or connection

1 / 4 (A) = 1 / 4

1 / 2 (B) = 1 / 2

2 / 4 (A) = 2 / 4

2 / 2 (B) = 2 / 2

3 / 4 (A) = 3 / 4

3 / 2 (B) = 3 / 2

4 / 4 (A) = 4 / 4

4 / 2 (B) = 4 / 2

1-4 / 1 (+ 120 V) = U_N

1-4 / 3 (0 V) = 0 V

1-4 / 5 (PE) = PE

Application range

Automation, industrial machinery and plant engineering

Note

Photographs are not true to scale and do not represent detailed images of the respective products.