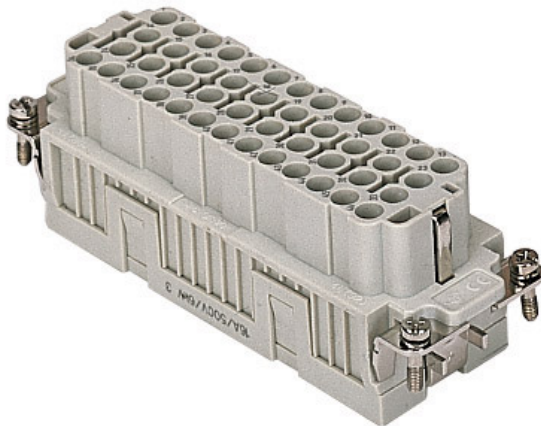



Part number

# CQEF 46 N



Female insert, CQE series, crimp connection, 46 poles + PE (47-92), 16 A 500 V 6 kV 3, size "104.62"

Product description	
Product type	Insert
Series	CQE
Connection type	Crimp connection
Gender	Female
N. of poles	92 poles + 
Size	Size "104.62"
Technical data	
Current	16 A
Voltage	500 V
Rated impulse withstand voltage	6 kV
Pollution degree	3
Rated voltage according to UL/CSA	600 V
Pole numbering system	47-92
IP degree of protection	IP20 without enclosure, IP65/IP66 with enclosure
Further technical details	
Characteristics according to EN 61984	16A 500V 6kV 3; 16A 830V 8kV 2
Mating cycles	≥ 500
Insulation resistance	≥ 10 GΩ
Contact resistance	≤ 1 mΩ
Weight	88,00 g
Operating temperature range (min, max)	-40 °C ... +125 °C
UL 94 flammability rating	V-0

Material properties	
Main material	Polycarbonate (PC)
Colour	RAL 7032 grey
RoHs conformity	Compliant
China RoHs - EFUP	E
REACH SVHC substances	No
Approvals / Standards	
Reference standard	EN 61984:2009-06
Certifications	CSA, CQC, DNV, BV, EAC
UL	ECBT2
cUL	ECBT8
General ordering information	
EAN13 code	8015747037143
eCl@ss 8.1	27440205
ETIM 7.0	EC000438
Packaging Information	
Sub-packaging length	113,00 mm
Sub-packaging height	36,00 mm
Sub-packaging width	180,00 mm
Sub-packaging weight	0,44 kg
Sub-packaging volume	0,73 dm <sup>3</sup>
Sub-packaging description	Carton tray
Sub-packaging quantity	5 Pcs
Sub-packaging EAN barcode	8015747037150

Part number

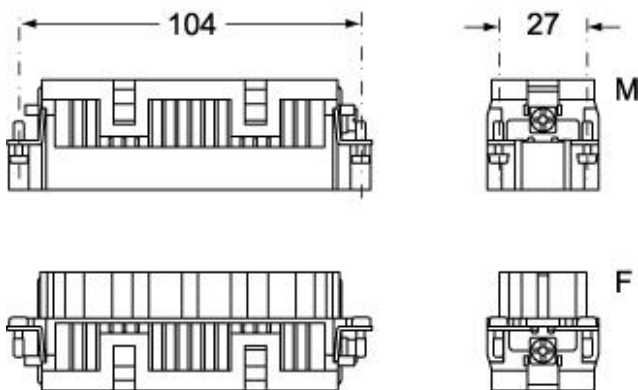
# CQEF 46 N



Catalogue drawings

Catalogue drawings

## CQEM 46



## CQEF 46

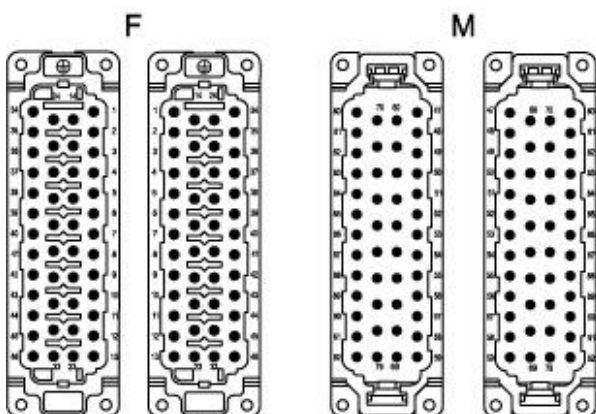
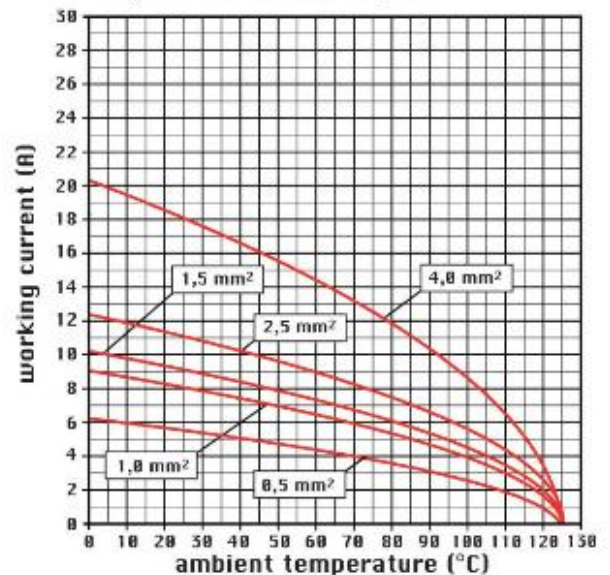


diagram CQE 46 and 92 poles



## Notes

CQEF/M 46 N inserts:

- characteristics according to EN 61984:  
(16A 500V 6kV 3)  
(16A 830V) 8kV 2)
- rated voltage according to UL/CSA: 600V
- insulation resistance: > 10 GOhm
- ambient temperature limit: -40 °C ... +125 °C
- are made of self-extinguishing thermoplastic resin UL 94 V0
- mechanical life: > 500 cycles
- contact resistance: < 1 mOhm
- for contact crimping instructions, please see the crimping tool section (16A contacts, CCF, CCM and CC...AN series) .
- enclosures: size "104.62":  
C-TYPE IP65/IP66  
C7 IP67 stainless steel lever

- V-TYPE IP65/IP66  
stainless steel lever
- T-TYPE IP65 insulating
- JEI zinc-plated steel lever
- BIG hoods
- W-TYPE aggressive environments
- EMC
- central lever
- IP68
- panel supports: page:COB

Dimensions shown in mm are not binding and may be changed without notice.

---

**California Proposition 65 Information**



**WARNING**

This product can expose you to nickel compounds, known to the State of California to cause cancer and/or reproductive toxicity. For more information go to [www.P65Warnings.ca.gov](http://www.P65Warnings.ca.gov).

---