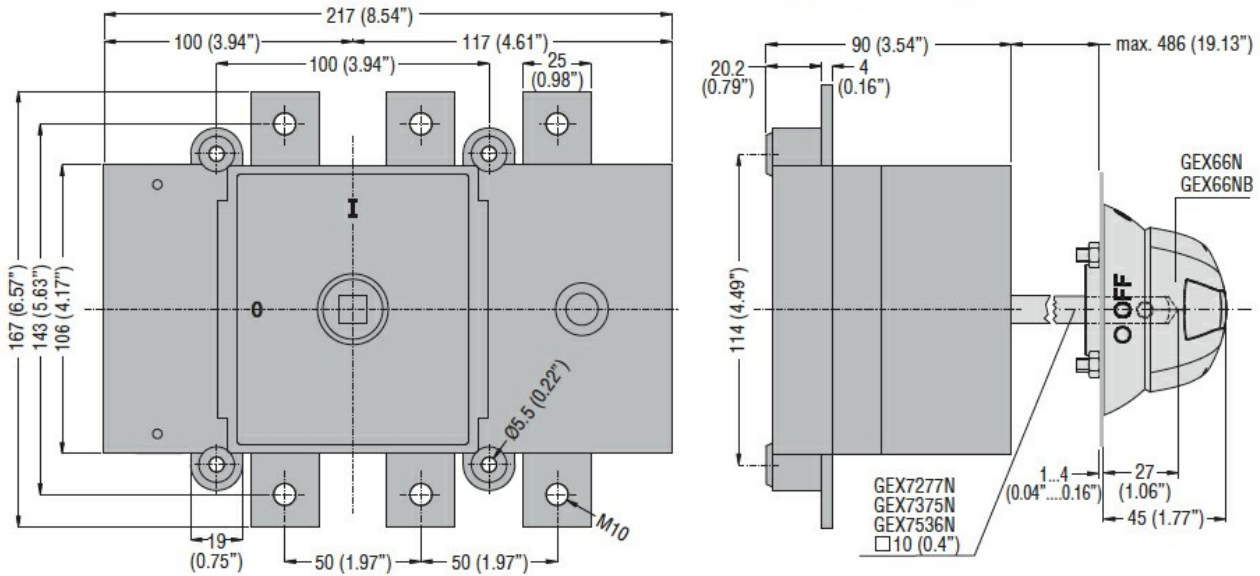




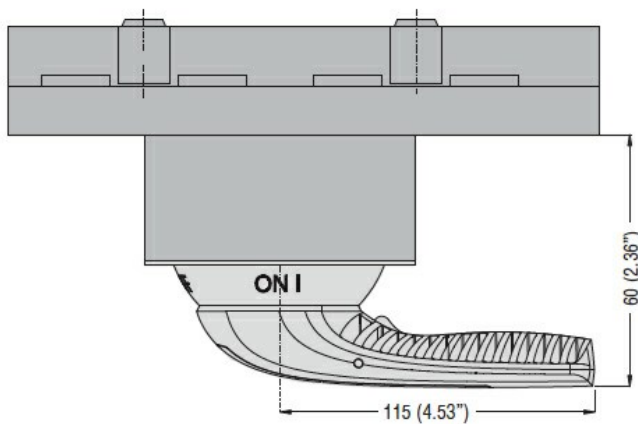
Product designation				Switch disconnecter
Product type designation				GE
Number of poles	Nr.			3
Operating voltage type				AC
<b>Contact characteristics</b>				
IEC Conventional free air thermal current I <sub>th</sub>	A			400
Rated insulation voltage U <sub>i</sub> IEC/EN	V			1000
Rated impulse withstand voltage U <sub>imp</sub>	kV			8
Operating current I <sub>e</sub>				
AC21A	400V	A	400	
	500V	A	400	
	690V	A	250	
AC22A	400V	A	400	
	500V	A	400	
	690V	A	200	
AC23A	400V	A	400	
	500V	A	315	
	690V	A	160	
Power dissipation per pole max	W			10.5
Rated operational power AC23A	400V	kW	220	
	690V	kW	153	
Rated short time current (1s) I <sub>cw</sub> (rms)	kA			12
Conditional short-circuit current (rms)	kA			100
Short-circuit protection with fuse	Class/A			gG400
Making capacity AC23A 400V	A			4000
Breaking capacity AC23A 400V	A			3200
Mechanical life	cycles			20000
Electrical life AC21A	cycles			1000 (AC23A 400V)
<b>Mechanical features</b>				
Operating position	normal allowable	Vertical plan Any		
Fixing	Screw			
Terminals	type screw	Bar M10		
Tightening torque for terminals	max	Nm	24	
	max	lbin	10	

Bar dimensions max	25x4		
<b>Ambient conditions</b>			
Operating temperature	min	°C	-25
	max	°C	55
<b>Storage temperature</b>			
	min	°C	-40
	max	°C	70
Max altitude	m	3000	
<b>Resistance &amp; Protection</b>			
Frontal IP degree	IP20		
Pollution degree	3		
<b>Dimensions</b>			

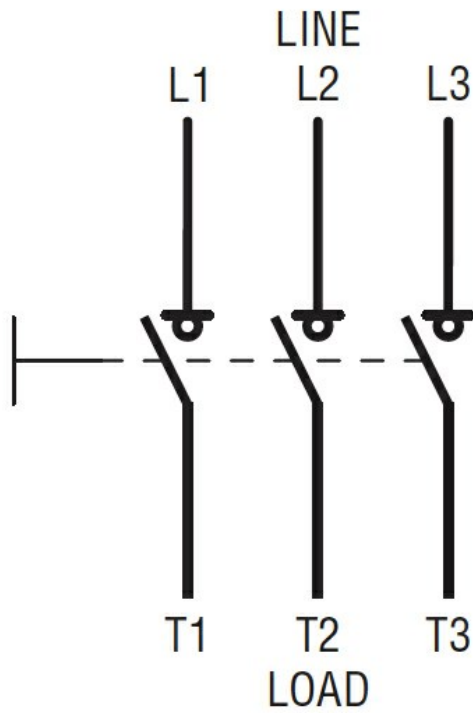
Door coupling version with handle  
GEX66N - GEX66NB



Direct operating version with handle  
GEX66ND



**Wiring diagrams**



**Certifications and compliance**

Compliance

IEC/EN 60947-1

IEC/EN 60947-3

Certifications

EAC

**ETIM classification**

ETIM 8.0

EC000216 -  
 Switch  
 disconnecter