



EG342C-81B001012059

EG34x

ABSOLUTE ENCODERS

**SICK**  
Sensor Intelligence.



Illustration may differ



### Ordering information

Type	Part no.
EG342C-81B001012059	1124604

Other models and accessories → [www.sick.com/EG34x](http://www.sick.com/EG34x)

### Detailed technical data

#### Features

<b>Weight</b>	1.5 kg
<b>Number of independently adjustable switching contacts</b>	4
<b>Operating speed</b>	≤ 6,000 min <sup>-1</sup>
<b>Permissible shaft loading</b>	200 N / radial 200 N / axial
<b>Total transmission ratio</b>	4.580/1
<b>Working range</b>	3,400 Revolutions
<b>Repeatability of the switching points</b>	< 20°
<b>Switching hystereses</b>	< 150°
<b>Switching cam length</b>	1,150 revolutions
<b>Positive opening</b>	1 revolution
<b>Actuation frequency</b>	≤ 200 min <sup>-1</sup>
<b>Operating temperature range</b>	0 °C ... +70 °C
<b>Storage temperature range</b>	0 °C ... +85 °C
<b>Resistance to shocks</b>	30 g, 11 ms, Single shock (EN 60068-2-27) 10 g, 16 ms, Continuous shock (EN 60068-2-27)
<b>Resistance to vibration</b>	0.03 g <sup>2</sup> , 10 Hz ... 200 Hz (EN 60068-2-6) 0.01 g <sup>2</sup> , 200 Hz ... 2,000 Hz (EN 60068-2-6)
<b>Enclosure rating</b>	IP65 (IEC 60529) <sup>1)</sup> IP67 (IEC 60529) <sup>1)</sup>
<b>Supply voltage</b>	24 V <sup>2)</sup>
<b>Rated current</b>	2 A
<b>Protection class</b>	III (according to DIN EN 61140) <sup>2)</sup>

<sup>1)</sup> With mating connector fitted.

<sup>2)</sup> The supply voltage must be generated by safety extra-low voltage (SELV/PELV) systems.

## Performance

<b>Repeatability standard deviation <math>\sigma_r</math></b>	< 20°
---	-------

## Electrical data

<b>Supply voltage</b>	≤ 24 V <sup>1)</sup>
-----------------------	----------------------

<sup>1)</sup> The supply voltage must be generated by safety extra-low voltage (SELV/PELV) systems.

## Mechanical data

<b>Weight</b>	1.5 kg
<b>Permissible shaft loading</b>	200 N (radial) 200 N (axial)
<b>Operating speed</b>	≤ 6,000 min <sup>-1</sup>

## Ambient data

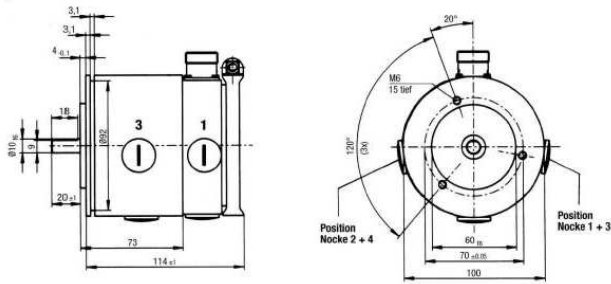
<b>Enclosure rating</b>	IP65 (IEC 60529) <sup>1)</sup> IP67 (IEC 60529) <sup>1)</sup>
<b>Operating temperature range</b>	0 °C ... +70 °C
<b>Storage temperature range</b>	0 °C ... +85 °C
<b>Resistance to shocks</b>	30 g, 11 ms, Single shock (EN 60068-2-27) 10 g, 16 ms, Continuous shock (EN 60068-2-27)
<b>Resistance to vibration</b>	0.03 g <sup>2</sup> , 10 Hz ... 200 Hz (EN 60068-2-6) 0.01 g <sup>2</sup> , 200 Hz ... 2,000 Hz (EN 60068-2-6)
<b>Protection class</b>	III (according to DIN EN 61140)

<sup>1)</sup> With mating connector fitted.

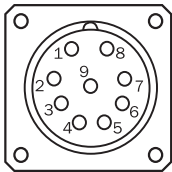
## Classifications

<b>eCl@ss 5.0</b>	27270502
<b>eCl@ss 5.1.4</b>	27270502
<b>eCl@ss 6.0</b>	27270590
<b>eCl@ss 6.2</b>	27270590
<b>eCl@ss 7.0</b>	27270502
<b>eCl@ss 8.0</b>	27270502
<b>eCl@ss 8.1</b>	27270502
<b>eCl@ss 9.0</b>	27270502
<b>eCl@ss 10.0</b>	27270502
<b>eCl@ss 11.0</b>	27270502
<b>eCl@ss 12.0</b>	27270502
<b>ETIM 5.0</b>	EC001486
<b>ETIM 6.0</b>	EC001486
<b>ETIM 7.0</b>	EC001486
<b>ETIM 8.0</b>	EC001486
<b>UNSPSC 16.0901</b>	41112113

### Dimensional drawing (Dimensions in mm (inch))




### PIN assignment



### Recommended accessories

Other models and accessories → [www.sick.com/EG34x](http://www.sick.com/EG34x)

	Brief description	Type	Part no.
Plug connectors and cables			
	Head A: female connector, M23, 9-pin, straight Cable: HIPERFACE®, SSI, Incremental, shielded	DOS-2309-G	6028533

## SICK AT A GLANCE

SICK is one of the leading manufacturers of intelligent sensors and sensor solutions for industrial applications. A unique range of products and services creates the perfect basis for controlling processes securely and efficiently, protecting individuals from accidents and preventing damage to the environment.

We have extensive experience in a wide range of industries and understand their processes and requirements. With intelligent sensors, we can deliver exactly what our customers need. In application centers in Europe, Asia and North America, system solutions are tested and optimized in accordance with customer specifications. All this makes us a reliable supplier and development partner.

Comprehensive services complete our offering: SICK LifeTime Services provide support throughout the machine life cycle and ensure safety and productivity.

For us, that is “Sensor Intelligence.”

## WORLDWIDE PRESENCE:

Contacts and other locations –[www.sick.com](http://www.sick.com)