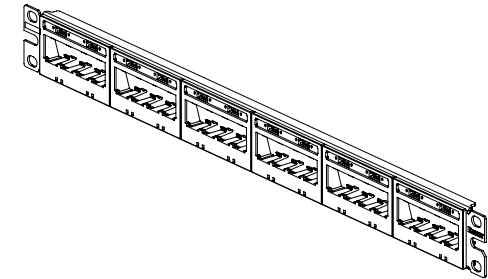
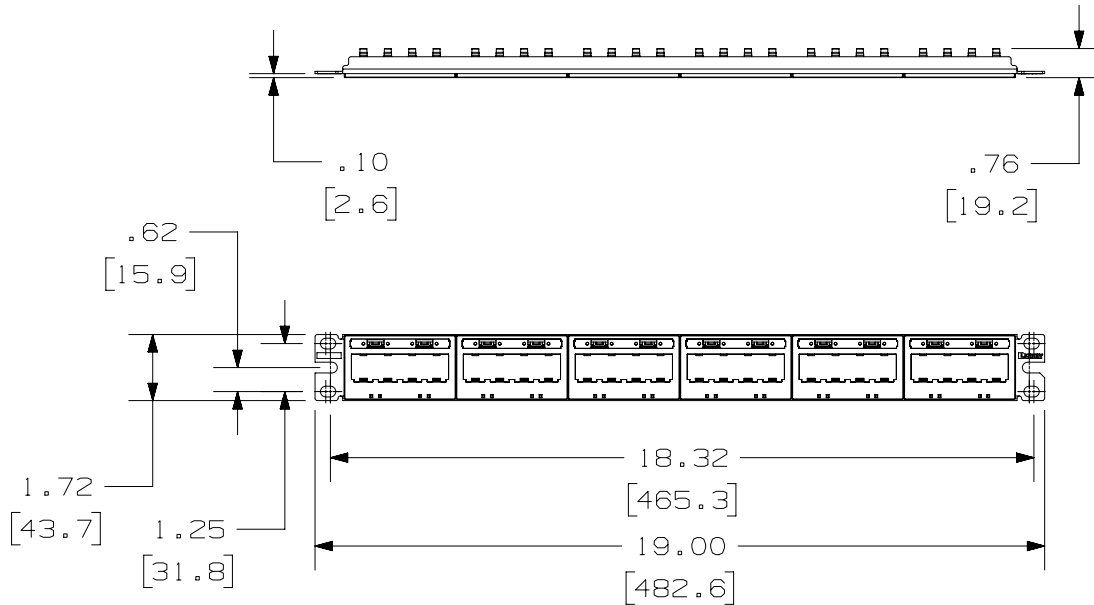


THIS COPY IS PROVIDED ON A RESTRICTED BASIS AND IS NOT TO BE USED IN ANY WAY DETRIMENTAL TO THE INTERESTS OF PANDUIT CORP.

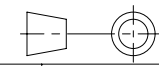
PANDUIT P/N	WEIGHT
UICMPP24BLY	.52 LB/EACH PC (235.7 g/EACH PC)

NOTES:

- SEE CURRENT CATALOG FOR ADDITIONAL PART NUMBER SUFFIXES TO INDICATE COLOR AND OR PACKAGE QUANTITY.
- SEE CATALOG FOR COMPLETE LIST OF PARTS APPLICABLE FOR USE WITH THIS PART.
- DIMENSIONS IN PARENTHESES ARE IN METRIC.
- PART INCLUDES:
  - 1- METAL STAMPING
  - 6- 4 POSITION FACEPLATE WITH 1 LABEL POCKET (ASSEMBLED TO METAL STAMPING)
  - 6- CLEAR LABEL COVER
  - 1- SCREW KIT (INCLUDES FOUR #12-24 SCREWS)
- LABELS SOLD SEPARATELY.



PART NUMBER		UICMPP24BLY	
TITLE			
MINI-COM ULTIMATE ID 24 PORT MODULAR PATCH PANEL WITH 1 LABEL POCKET PER FACEPLATE			
CUSTOMER DRAWING			
ITEM REVISION NAME		M02479EA/08	
DATASET FILE NAME		M02479EA_DC107/08A	
UNLESS OTHERWISE SPECIFIED, DIMENSIONAL TOLERANCES ARE: IN [mm]		MATERIAL:	
.x ± .xx ± .03 [ .8 ]		STAMPING: C.R.S. FACEPLATES: ABS	
.xxx ± .010 [ .3 ]		DRAWING NUMBER:	
ANGLES ±		02479-107	
THIRD ANGLE PROJECTION		SHT 1 OF 1	
DRAWN BY	DATE	CHK	SCALE
JSP	3-11-06	MJD	NONE
REV	DATE	BY	CHK
2	11-14-18	BAME	KRKE
1	5-8-14	BJN	JSP
APR	DESCRIPTION		ECN
	A. REMOVED METRIC MOUNTING SCREWS		02479-107
	REVISED & REDRAWN PREVIOUS REVISIONS REMVD FOR CLARITY		02479-107



D10100DA/14