

# Lampholders for Discharge Lamps

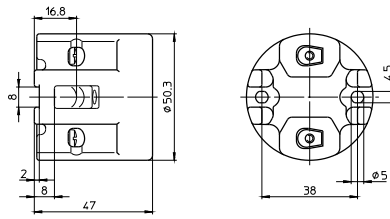
## E27 lampholders

Casing: porcelain, white, T210  
 Nominal rating: 4/250/5 kV  
 Screw terminals: 0.5–2.5 mm<sup>2</sup>  
 Spring loaded central contact  
 Oblong holes for screws M4, length max. 15 mm  
 Weight: 106.8/103.9 g, unit: 100 pcs.  
 Type: 62104

**Ref. No.: 102615**

Type: 62105 with lamp safety catch

**Ref. No.: 102617**



1

2

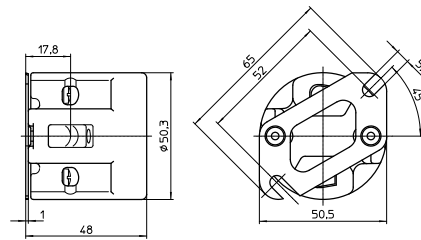
## E27 lampholders

Casing: porcelain, white, T210  
 Nominal rating: 4/250/5 kV  
 Screw terminals: 0.5–2.5 mm<sup>2</sup>  
 Spring loaded central contact  
 Fixing bracket with slot for screws M5  
 Weight: 113 g, unit: 100 pcs.  
 Type: 62110

**Ref. No.: 106585**

Type: 62111 with lamp safety catch

**Ref. No.: 109568**



3

4

## E27 lampholders

Casing: porcelain, white, T270  
 Nominal rating: 4/250/5 kV  
 Screw terminals: 0.5–2.5 mm<sup>2</sup>  
 Spring loaded central contact  
 Fixing oblong holes for screws M4  
 Weight: 60.6 g, unit: 200 pcs.  
 Type: 62050

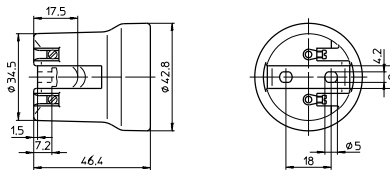
**Ref. No.: 102599**

Type: 62010 with lamp safety catch (with spring)

**Ref. No.: 102577**

Type: 62009 with lamp safety catch (with crushing)

**Ref. No.: 544605**



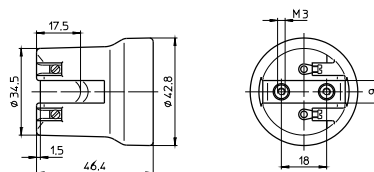
5

6

## E27 lampholder

Casing: porcelain, white, T270  
 Nominal rating: 4/250/5 kV  
 Screw terminals: 0.5–2.5 mm<sup>2</sup>  
 Spring loaded central contact  
 Fastening bushes for screws M3  
 Weight: 66.3 g, unit: 200 pcs.  
 Type: 62015

**Ref. No.: 102582**



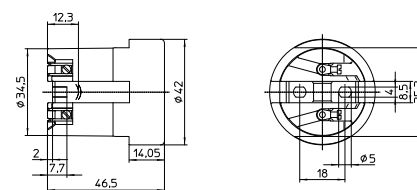
7

8

## E27 lampholder, one-piece

Material: porcelain, white, T270  
 Nominal rating: 4/250/5 kV  
 Screw terminals: 0.5–2.5 mm<sup>2</sup>  
 Spring loaded central contact  
 Fixing oblong holes for screws M4  
 Weight: 60.5 g, unit: 200 pcs.  
 Type: 62070

**Ref. No.: 543304**



9

10