



Product designation

Direct-on-line starter

Product type designation

M2R03212...B4

Electrical features

Relay adj range	A	24-32	
IEC technical characteristics ($\leq 440V$)	le kW	A kW	32 15

Components

Starter enclosure standard supplied	M2RA
Contactor standard supplied	BF3200A
Thermal relay standard supplied	RF383200

Mechanical features

Weight	g	1260
--------	---	------

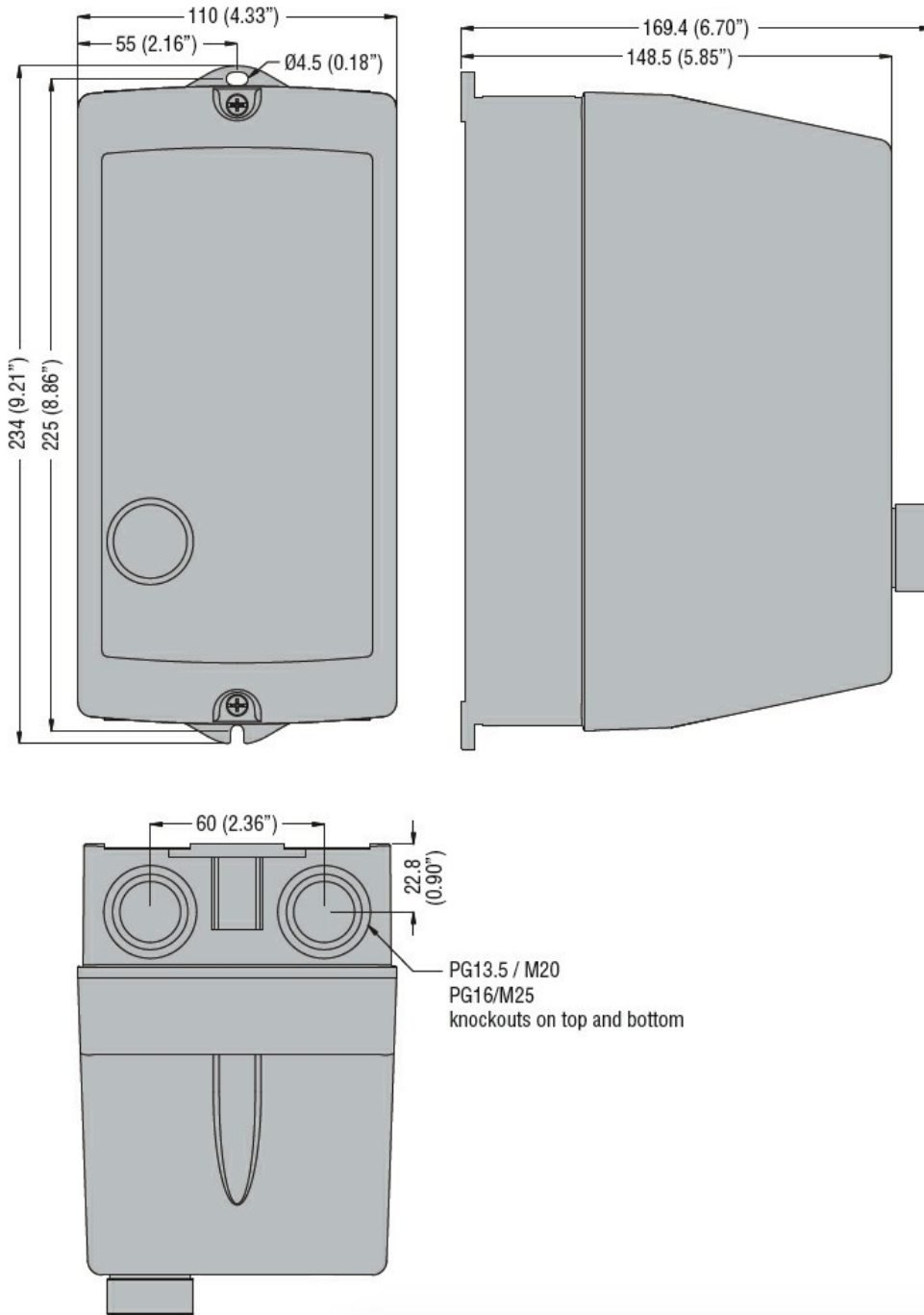
Ambient conditions

Operating temperature	min	°C	-25
	max	°C	+60
Storage temperature	min	°C	-40
	max	°C	+70

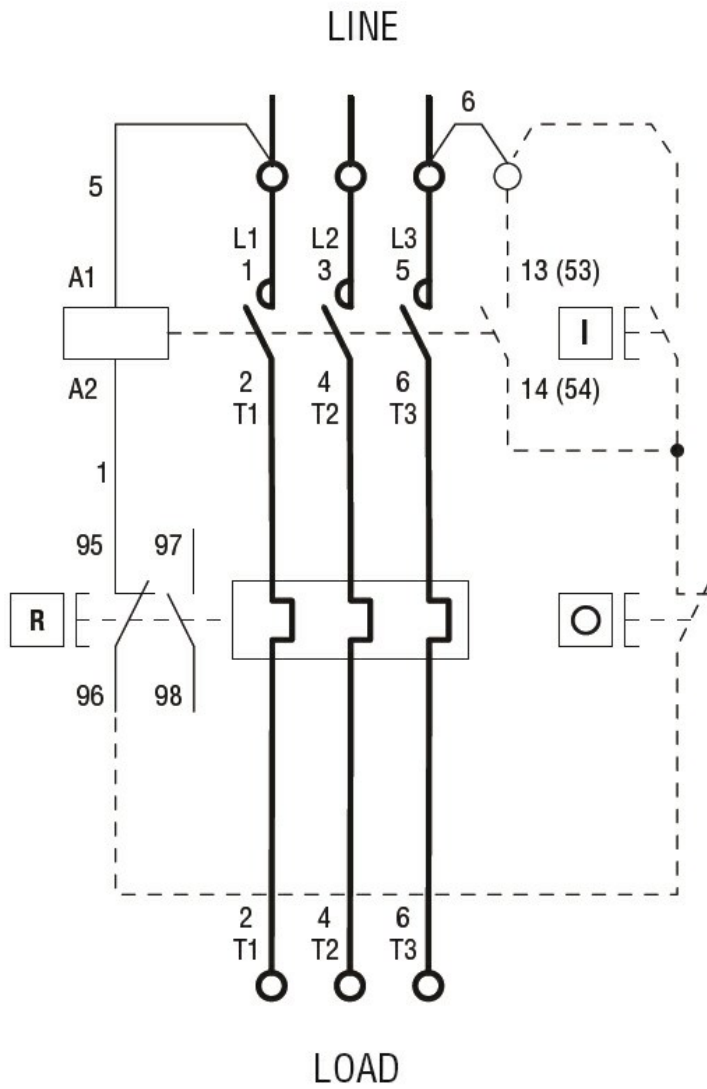
Resistance & Protection

Frontal IP degree	IP65
-------------------	------

Dimensions



Wiring diagrams



R = Reset; I = Start; O = Stop

Certifications and compliance

Compliance

IEC/EN 60947-1
IEC/EN 60947-4-1
UL508 CSA C22.2 n° 14

Certificates

CSAus
cULus
EAC

ETIM classification

ETIM 8.0

EC001037 -
Motor
starter/Motor
starter
combination