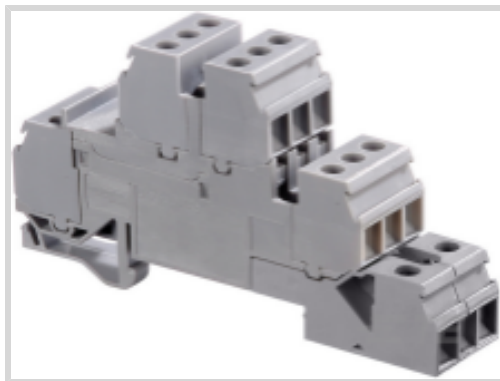


1SNA110331R2500 ✓ ACTIVE

TE Internal #: 1SNA110331R2500

TE Internal Description: D4/6.LNTP6

[View on TE.com >](#)



Product Compliance

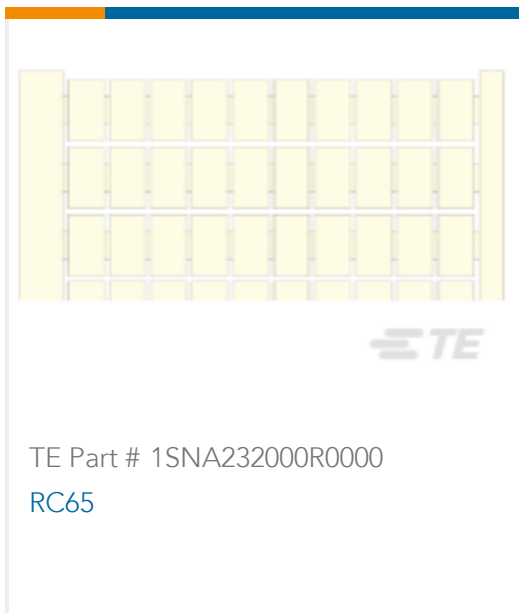
[For compliance documentation, visit the product page on TE.com>](#)

EU RoHS Directive 2011/65/EU	Compliant
EU ELV Directive 2000/53/EC	Compliant
China RoHS 2 Directive MIIT Order No 32, 2016	No Restricted Materials Above Threshold
EU REACH Regulation (EC) No. 1907/2006	Current ECHA Candidate List: JUNE 2022 (224) Candidate List Declared Against: JUNE 2022 (224) Does not contain REACH SVHC
Halogen Content	Low Halogen - Br, Cl, F, I < 900 ppm per homogenous material. Also BFR/CFR/PVC Free
Solder Process Capability	Not reviewed for solder process capability

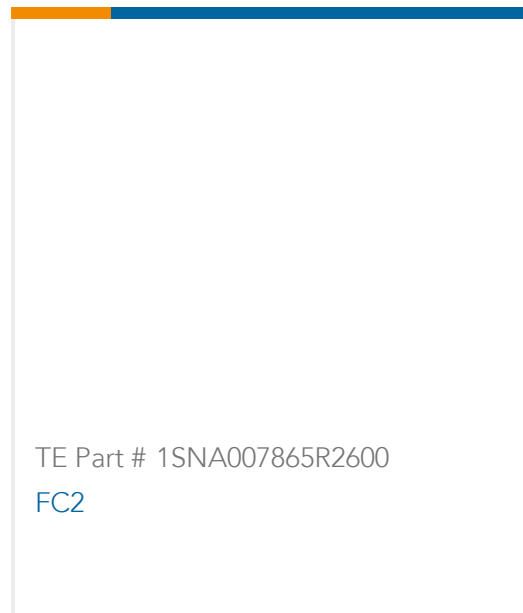
Product Compliance Disclaimer

This information is provided based on reasonable inquiry of our suppliers and represents our current actual knowledge based on the information they provided. This information is subject to change. The part numbers that TE has identified as EU RoHS compliant have a maximum concentration of 0.1% by weight in homogenous materials for lead, hexavalent chromium, mercury, PBB, PBDE, DBP, BBP, DEHP, DIBP, and 0.01% for cadmium, or qualify for an exemption to these limits as defined in the Annexes of Directive 2011/65/EU (RoHS2). Finished electrical and electronic equipment products will be CE marked as required by Directive 2011/65/EU. Components may not be CE marked. Additionally, the part numbers that TE has identified as EU ELV compliant have a maximum concentration of 0.1% by weight in homogenous materials for lead, hexavalent chromium, and mercury, and 0.01% for cadmium, or qualify for an exemption to these limits as defined in the Annexes of Directive 2000/53/EC (ELV). Regarding the REACH Regulation, the information TE provides on SVHC in articles for this part number is based on the latest European Chemicals Agency (ECHA) 'Guidance on requirements for substances in articles' posted at this URL: <https://echa.europa.eu/guidance-documents/guidance-on-reach>

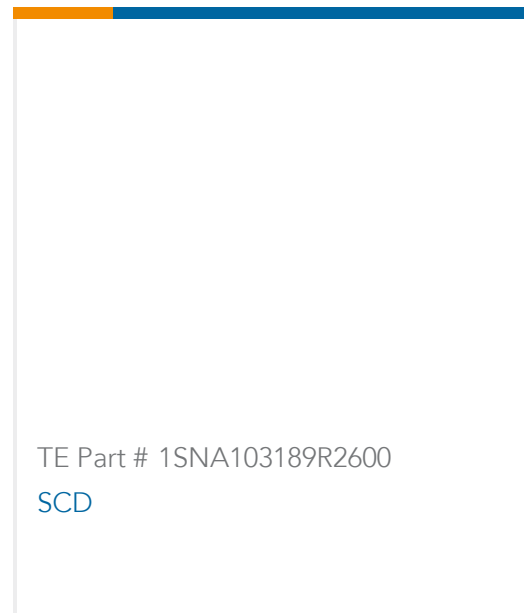
Compatible Parts



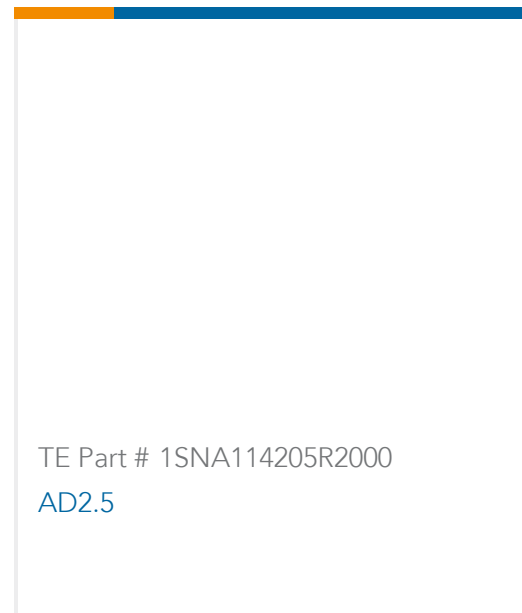
TE Part # 1SNA232000R0000
RC65



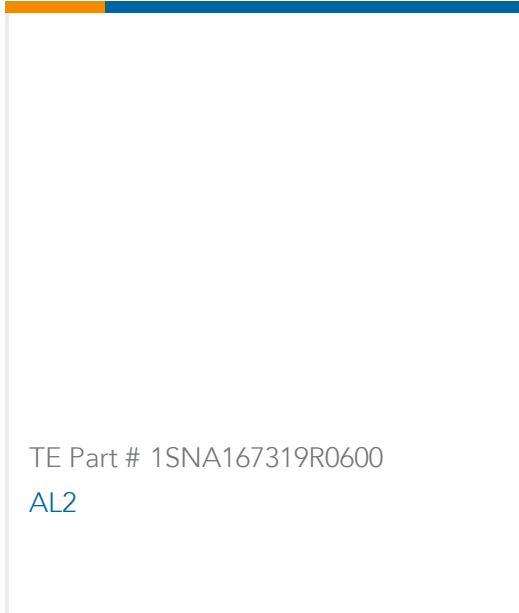
TE Part # 1SNA007865R2600
FC2



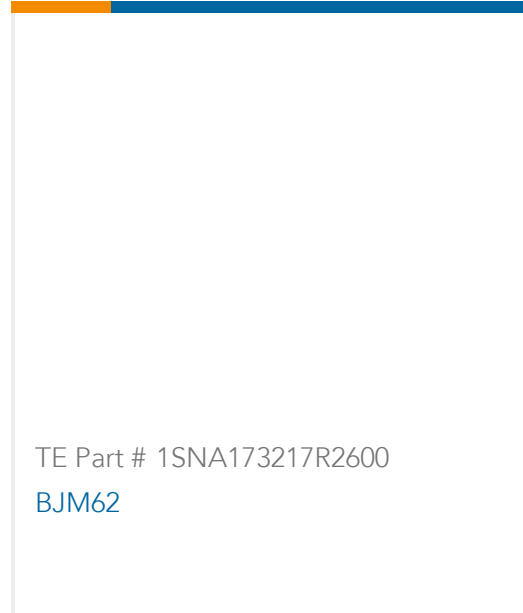
TE Part # 1SNA103189R2600
SCD



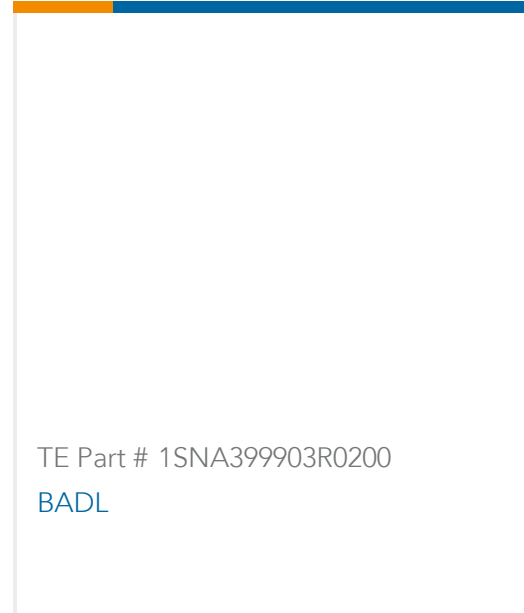
TE Part # 1SNA114205R2000
AD2.5



TE Part # 1SNA167319R0600
AL2



TE Part # 1SNA173217R2600
BJM62



TE Part # 1SNA399903R0200
BADL



TE Part # 1SNA114117R0700
SCFD



TE Part # 1SNA173218R0700
BJM62



TE Part # 1SNA173219R0000
BJM62



TE Part # 1SNA173221R2200
BJM62



TE Part # 1SNA173226R2700
BJM62



TE Part # 1SNA174112R1600
BJM62



TE Part # 1SNA174113R1700
BJM62



TE Part # 1SNA174114R1000
BJM62



TE Part # 1SNA174115R1100
BJM62

Customers Also Bought



TE Part # 1SNA125124R0100
M35/16.N



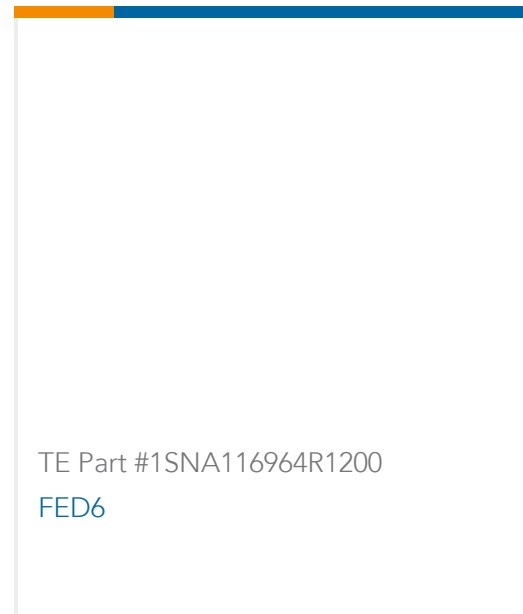
TE Part # 1SNA125129R1600
M16/12.N



TE Part # 1SNA165130R2300
M16/12.P



TE Part # 1SNA110327R2100
D4/6.LNTP2



Documents

Datasheets & Catalog Pages

[D4/6.LNTP6](#)

English

[ENTRELEC Terminal Block - Master Catalog](#)

English

[ENTRELEC Terminal Blocks Catalogue \(RUS\)](#)