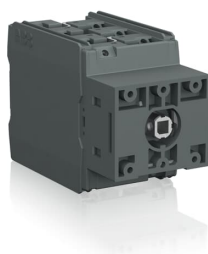


PRODUCT-DETAILS

# OTDC16UST6

## OTDC16UST6 PV Disconnect Switch



### Informations générales

|                              |  |
|------------------------------|--|
| Extension du type de produit | OTDC16UST6   |
| Code de produit              | 1SCA134583R1001  |
| EAN                          | 6417019633657  |
| Description courte           | OTDC16UST6 PV Disconnect Switch  |
| Description longue           | OTDC16UST6 PV Disconnect Switch, Terminal bolt kit included, Handle and shaft need to be ordered separately, Door mounting, US single-wire break, UL 600 VDC 16 A triple circuit, IEC 1000 VDC 10 A triple circuit |

### Valeur Circulaire

|   |                 |
|---|-----------------|
| Conflict Minerals Reporting Template (CMRT) | 9AKK108467A5658 |
| REACH Declaration                           | 1SCC301240D0201 |
| Informations RoHS                           | 1SCC301239D0201 |
| Toxic Substances Control Act - TSCA         | 1SCC301321D0201 |

### Commande

|                  |          |
|------------------|----------|
| Quantité minimum | 1 pièce  |
| Code douanier    | 85363030 |

Pays d'origine

Estonia (EE)

## Downloads Préférés

|  |  |
|--|--|
| Fiche produit, informations techniques | 1SCC301022C0201  |
| Instructions et manuels                | 1SCC301086M0204  |
| Mechanical Drawings                    | otdc16-32ut-ust6.igs<br>1SCC307477F0001<br>1SCC307478F0001 |

## Dimensions

|                             |                   |
|-----------------------------|-------------------|
| Dimensions Cadre du produit | XS                |
| Produit Largeur Net         | 54.5 mm<br>2.1 in |
| Produit Hauteur Net         | 74 mm<br>2.9 in   |
| Produit Longueur Net        | 110 mm<br>4.3 in  |
| Poids net                   | 0.4 kg<br>0.8 lb  |

## Technique

|  |  |
|--|--|
| Rated Operational Current DC-21B ( $I_{\theta}$ )          | (660 V) 16 A   |
| Courant thermique conventionnel à l'air libre ( $I_{th}$ ) | $\Theta = 40^{\circ}\text{C}$ 40 A                           |
| Conventional Thermal Current ( $I_{the}$ )                 | Fully Enclosed 32 A  |
| Tension assignée de tenue aux chocs ( $U_{imp}$ )          | 8 kV   |
| Tension assignée d'isolement ( $U_i$ )                     | 1000 V   |
| Tension  | 1000 V   |
| Rated Short-Circuit Making Capacity ( $I_{cm}$ )           | (1000 V DC) 1 kA   |
| Courant assigné de courte durée admissible ( $I_{cw}$ )    | (1000 V DC) 1 kA<br>for 1 s 1 kA                             |
| Rated Conditional Short-Circuit Current ( $I_{nc}$ )       | (1000 V DC) 10 kA  |
| Protection Type  | UL508i RK5 fuselink max. 70A, IEC60947 gPV fuselink max. 80A |
| Power Loss   | at Rated Operating Conditions per Pole 0.1 W                 |
| Degré de pollution   | 3  |
| Handle Type  | Handle and shaft not included                                |
| Positive Opening Operation Torque (Direct Opening Action)  | 0.8 ... 1.6 N·m  |
| Diamètre d'arbre   | 6 mm<br>0.24 in  |
| Switches Operating Mechanism                               | Mechanism on Top of the Switch                               |
| Position of Line Terminals                                 | Top In - Bottom Out<br>Bottom In - Top Out                   |
| Mode de fonctionnement                                     | Front Operated   |

|                      |  |
|----------------------|--|
| Normes et standards  | UL508i and IEC 60947-1, -3   |
| Fonctions spéciales  | US single-wire break   |
| Type de montage      | Door mounting  |
| Number of Circuits   | 3  |
| Nombre de pôles      | 6  |
| Section de câble     | 2.5 ... 16 mm <sup>2</sup><br>12 ... 6 AWG   |
| Indice de protection | Front IP20   |
| Type de borne        | Screw Terminals  |
| Couple de serrage    | 1.2 ... 1.4 N·m<br>10.6 ... 12.4 lbf·in  |
| Utilization          | Photovoltaic   |
| Utilization Category | Switching of resistive loads, including moderate overloads - occasional actuation (DC-21B) |

### Technique UL/CSA

|                           |   |
|---------------------------|---|
| Maximum Operating Voltage | 600Vdc, UL 508i                         |
| Ampere Rating             | 16A,600Vdc,UL508i                       |
| Couple de serrage         | 1.2 ... 1.4 N·m<br>10.6 ... 12.4 lbf·in |

### Environnement

|                                     |  |
|-------------------------------------|--|
| Statut RoHS                         | Following EU Directive 2011/65/EU and Amendment 2015/863 July 22, 2019 |
| Toxic Substances Control Act - TSCA | 1SCC301321D0201  |

### Certificats et Déclarations (Numéro de document)

|                                  |                              |
|----------------------------------|------------------------------|
| CCC Certificate                  | CQC2012010302579872          |
| Déclaration de Conformité - CE   | 1SCC301192D2704              |
| Declaration of Conformity - UKCA | 1SCC301313D0201              |
| DNV GL Certificate               | 1SCC301231D0201              |
| REACH Declaration                | 1SCC301240D0201              |
| Certificat UL                    | UL certificate OTDC16-32.pdf |

### Emballage

|                             |                  |
|-----------------------------|------------------|
| Emballage Niveau 1 Unités   | box 1 pièce      |
| Emballage Niveau 1 Largeur  | 100 mm<br>3.9 in |
| Emballage Niveau 1 Longueur | 64 mm<br>2.5 in  |
| Emballage Niveau 1 Hauteur  | 125 mm<br>4.9 in |
| Emballage Niveau 1 Poids    | 0.4 kg<br>0.9 lb |
| Emballage Niveau 1 EAN      | 6417019633657    |

---

## Classifications

---

|  |  |
|--|--|
| Code de classification d'objet           | Q  |
| ETIM 7                                   | EC000216 - Switch disconnecter                             |
| ETIM 8                                   | EC000216 - Switch disconnecter                             |
| ETIM 9                                   | EC000216 - Switch disconnecter (low voltage)               |
| UNSPSC                                   | 39122233   |
| Code de catégorie granulaire IDEA (IGCC) | 5293 >> Switch disconnecter                                |
| eClass                                   | V11.1 : 27371403   |
| Catégorie DEEE                           | 5. Small Equipment (No External Dimension More Than 50 cm) |

---

---

## Catégories

---

Produits basse tension → Interrupteurs → DC Switch-Disconnectors

