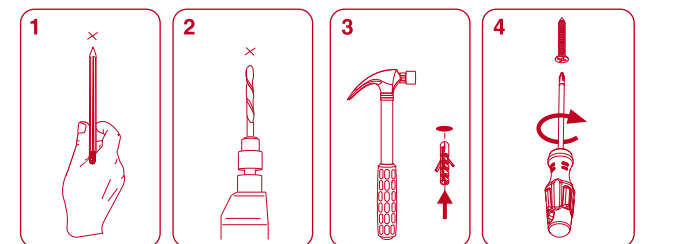
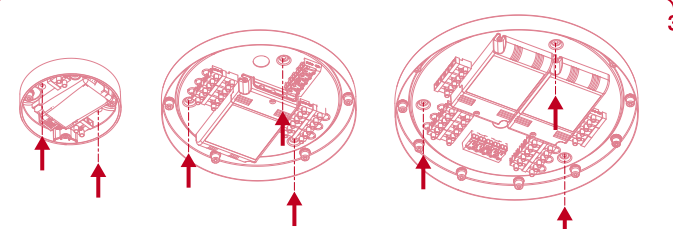
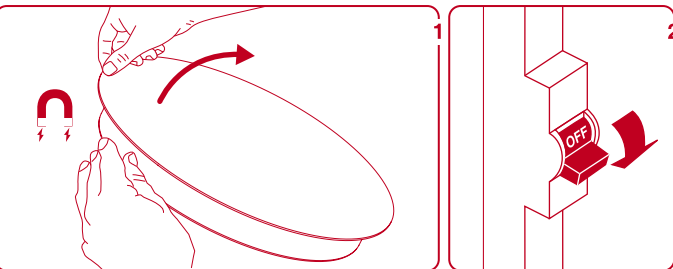
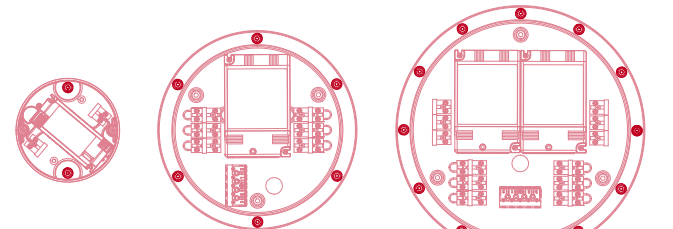




# Fancy Shape



**WARNING:**  
POSITION THE BASE ACCORDING TO THE LAYOUT OF YOUR LUMINAIRE



2 EQUIDISTANT FIXING POINTS  
6 EQUIDISTANT FIXING POINTS  
12 EQUIDISTANT FIXING POINTS

**CONNECT BASE Ø155mm** 4a

**CONNECT**

**NO DIM**

**DIM**

**POWER SUPPLY DALI**

**- FOLLOW DRIVER'S CONNECTION DIAGRAM**

**CONNECT BASE Ø270mm**  
**BASE Ø330mm** 4b

**CONNECT**

**NO DIM**

**DIM**

**POWER SUPPLY DALI**

5a

**CORD ACCESSORY ONE PLANE**

**ADJUST LUMINAIRE HEIGHT**

5b

**ONLY FOR TOP LUMINAIRE**

**CORD ACCESSORY**

**ADJUST**

**WARNING: POSITION THE TEMPLATE ACCORDING TO THE LAYOUT OF YOUR LUMINAIRE**

**OPTIONAL:**

**CORD ACCESSORY ONE PLANE**

**CORD ACCESSORY**

**ADJUST**

**OPTIONAL:**

**CORD ACCESSORY**

**CORD ACCESSORY**

**ADJUST**

6

**ADJUST CORD**

7

**CONNECT LUMINAIRE**

8

**WARNING: SERIAL CONECTION THE ELECTRICAL CIRCUIT MUST BE CLOSED**

**REPLACE SHORT FOR LUMINAIRE CONECTIONS IF NECESSARY**

**CONNECT LUMINAIRE**

**OPTIONAL:**

**IN CASE YOU NEED TO CUT THE CORD**

**MIND POLARITY**

9a

**BASE Ø155mm**

9b

**BASE Ø270mm**  
**BASE Ø330mm**

**CONNECT**

**CONNECT**

10a

**BASE Ø155mm**

10b

**BASE Ø270mm**  
**BASE Ø330mm**

**CONNECT**

**CONNECT**