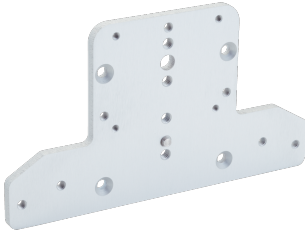


## Adapter plate



## Ordering information

Type	Part no.
Adapter plate	2085937

Other models and accessories → [www.sick.com/](http://www.sick.com/)

## Detailed technical data

### Technical specifications

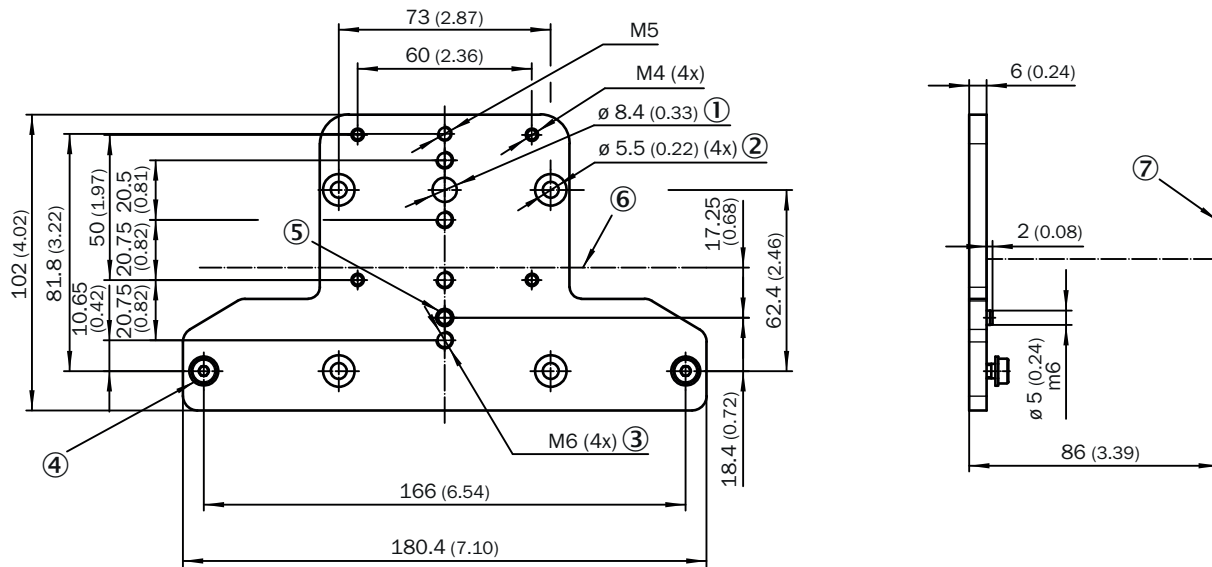
<b>Accessory group</b>	Mounting brackets and plates
<b>Accessory family</b>	Mounting plates
<b>Suitable for</b>	LRS4000, LMS1xx, LMS1000, MRS1000, multiScan100
<b>Material</b>	Aluminum (anodised)
<b>Items supplied</b>	4 x M5 x 10 countersunk screws, stainless steel 2x cylinder head screws with M5 x 8 washers, stainless steel
<b>Dimensions (W x H x L)</b>	180.3 mm x 6 mm x 124.5 mm
<b>Description</b>	Adapter plate for mounting the sensor to accessory components
<b>Weight</b>	190 g

### Classifications

<b>ECLASS 5.0</b>	27279202
<b>ECLASS 5.1.4</b>	27279202
<b>ECLASS 6.0</b>	27279202
<b>ECLASS 6.2</b>	27279202
<b>ECLASS 7.0</b>	27279202
<b>ECLASS 8.0</b>	27279202
<b>ECLASS 8.1</b>	27279202
<b>ECLASS 9.0</b>	27273701
<b>ECLASS 10.0</b>	27273701
<b>ECLASS 11.0</b>	27273701
<b>ECLASS 12.0</b>	27273701
<b>ETIM 5.0</b>	EC002024
<b>ETIM 6.0</b>	EC002024
<b>ETIM 7.0</b>	EC002024
<b>ETIM 8.0</b>	EC002024
<b>UNSPSC 16.0901</b>	32131023

## Dimensional drawing (Dimensions in mm (inch))

### Adapter plate



- ① Rotation point for cylinder pin  $\varnothing$  8.2 mm (part 2079939)
- ② Depression for hexagon screw ISO 10642 - M5 for general mounting (as well as part 2076764 and part 2079939)
- ③ Mounting bracket M6 (part 2046025, part 2046989)
- ④ 2x cylinder head screw DIN 7984 - M5x8-A2 (mounting part 2085935)
- ⑤ Scan axis
- ⑥ Scan plane  $0^\circ$
- ⑦ Rotation axis

## SICK AT A GLANCE

SICK is one of the leading manufacturers of intelligent sensors and sensor solutions for industrial applications. A unique range of products and services creates the perfect basis for controlling processes securely and efficiently, protecting individuals from accidents and preventing damage to the environment.

We have extensive experience in a wide range of industries and understand their processes and requirements. With intelligent sensors, we can deliver exactly what our customers need. In application centers in Europe, Asia and North America, system solutions are tested and optimized in accordance with customer specifications. All this makes us a reliable supplier and development partner.

Comprehensive services complete our offering: SICK LifeTime Services provide support throughout the machine life cycle and ensure safety and productivity.

For us, that is “Sensor Intelligence.”

## WORLDWIDE PRESENCE:

Contacts and other locations –[www.sick.com](http://www.sick.com)